



PLANT OF THE MONTH POPPIES

Spring is in the air- fruit trees and flowering shrubs, including Clematis should all be in blossom now.

Vegetables to grow now -

Seeds, Carrots, parsnips, beetroot, peas, cabbages, silver beet, radishes.

Or Seedlings - cabbages, lettuce, peas, silver beet.

Cucumber, marrows, zucchini, pumpkin, squashes can also go in now.

You can grow Rockmelon, and watermelon, but they need a lot of water, start the seeds in a pot, and when they have grown a little put into the garden, and water them in.

Parsley, capsicums, sweet corn and tomato plants can also go in now. I cover the tomatoes with shade cloth, most nights if the temperature drops - or frost is about. Beans - I like purple King a good climber for our area, also cover if frost is a about.

Flowers-

For Summer and Autumn flowering try:- Ageratum, alyssum, asters, balsam, carnations, cosmos. You can grow from seeds - or buy seedling of Dianthus, gypsophila, larkspur, linaria, lobelia, livingstone daisy, marigold.

Dahlias- seedling, of the dwarf varieties, they grow to about 60cm in height, colours yellow, red and pinks ideal for cut flowers. The taller dahlias grow from a tuber - They come in different varieties Decorative, Cactus, and Water Lily.

These taller varieties require to be staked. Tubers can last for several years, but if your soil get too wet in the winter you can dig them up and store in a box covered with saw dust or damp soil in a airy shed. Then replant them in October.

Nasturtium, pansy, petunias, phlox, schizanthus, portulaca, snapdragons, verbena, can also be grown now.

Bulbs - after the spring bulbs have finished flowering, feed them now with complete fertilizer, so they can make next years flower.

Poppies have been grown for thousands of years. The opium poppies gives us morphine



and codeine, our most important painkillers, and also herion, which is addictive. Its growth is strictly controlled in many countries. Cultivation- Likes full sun and well drained soil. Propagating - sow seeds in spring, pressing the seeds into the soil.

Field poppies require a cold spell to trigger germination. They self seed freely.

Thin out to 30cm, not suitable for indoor

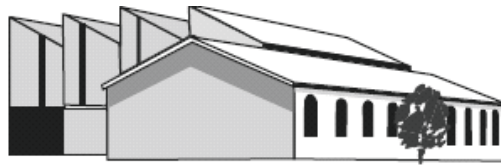


cultivation. Collect the seeds when capsule is ripe. Uses - dried seed heads for winter arrangements.

Culinary- Seed, Sprinkle on bread, cake and biscuits for a pleasant nutty flavour. Add to curry powder for texture, flavour and as a thickener. Gives a culinary oil from cold pressing.

Seeds can be feed to the birds. An artist's oil is made from the second pressing. Flowers - Field poppy petals can be used to colour medicines and wines.

GOULBURN AND RURAL



PRODUCE

PHONE: (02) 4821 3655

FAX: (02) 4821 8852

149-159 Sloane Street, Goulburn, NSW

Gilmour Station Pty Ltd T/A

A.C.N. 001 792 632

ABN 37 440 572 739



- Hardware ● Roofing ● Building
- Pumps ● Irrigation ● Husqvarna
- Fertiliser ● Seed ● Agronomy
- Animal Health ● Stock feeds



BRAIDWOOD RURAL AND BUILDING SUPPLIES



PHONE: (02) 4842 2650

FAX: (02) 4842 2630

Gilmour Station Pty Ltd T/A

A.C.N. 001 792 632 ABN 37 440 572 739

Your One Stop Produce, Hardware & Building Shop

GILLAMATONG LANE,

BRAIDWOOD, NSW 2622

GLENDARLYN STOCKFEEDS

97 Burrabinga Road, Tarago (off Lumley Rd.)

- * Suppliers of Stockfeeds
- * Mineral Blocks
- * Bird Seeds
- * Small bales
- * Veterinary supplies
- * Dog & Cat dry food
- * Large Bales
- * Round bales
- * And much more

Come in and check out our competitive prices

Professional advice for all you animal needs
Supporting the local community

PH: 48494565

MOB: 0438 430 693

HOURS: Thursday to Saturday - 8am to 5pm

Sunday - 8.00am to 12 noon

Eftpos Facility Available

There was a very busy bee at the Windellama Landcare Shed (the HQ) at Windellama Hall on the Saturday 5 September. This was well attended, and many of the members cleaned out and tidied up the shed while others put up the water tank and completed the necessary plumbing (with many suggestions from other members on how it should be done). A hearty lunch was prepared by our catering officers and while we ate, members discussed what should be done with our new trailer to adapt it for Landcare use.

The next get together of the Windellama Landcare Group will be on Saturday 14 November when we will be having our annual inspection and review of earlier projects of the Group. We will visit about three properties and assess the progress and the success of remedial work of erosion areas, tree planting and other Landcare work. All members and visitors are welcome – details will be in the next Landcare update in the November Windellama news.

In December we will have our Annual General Meeting and Christmas party – the date is set for 5 December – more details in the next Update.

The 150th Anniversary of St. Bartholomew's was a celebration that renewed friendships, provided conversation bringing forth details of memories regarding the history of the Church and many who are buried in the cemetery. Although numbers have dwindled over the years 70 guests helped to make the occasion joyous, and voices filled the Church as hymns were sung.



Our thanks to all who helped with the catering and to Shirley Cornish for the magnificently decorated cake.



Dallens Mobile Mechanic



Rob Hutchison

Ph: 02 4844 5727
Mob: 0401 078 483

Lic. #46213

- **Chainsaw Sharpening & Repairs**
- **Logbook services**
- **Breakdown service available**
- **Motor re-builds**
- **Clutches**
- **Brakes**
- **All mechanical repairs**
- **Travel to you**

AARON'S MINI EXCAVATIONS

ABN 84197940351

4 in 1 Bucket Postholes
Trenches Levelling Slashing
3 tonne tipper a available
Fits through 1 metre opening!!
Phone: 48411 862
Fax: 48411 395
Mobile: 0418 111 862

JOHNSON & SENDALL

INCORPORATING MULLENS

SOLICITORS - CONVEYANCERS

13 MONTAGUE ST GOULBURN 2580

PH (02) 4821 1588

FAX (02) 4821 9850

Tarago Tilt Tray Service - Ph 0427 481 632

Because we have a legally registered tow truck, means we can tow or carry,registered or not.....

-Cars-Machinery-Sheds-Boats-Trailers-
-Caravans-Building Materials-

- Move transportable water tanks, etc
- Car broken down? We'll pick it up and take it to the servo for repairs.
- Bogged? The truck is equipped with a seven ton winch—lotsa grunt!



Want to tow a large or small unregistered caravan/trailer to or from the coast or even next door and found out permits are not available for this?

We can do it, either tow or carry and it's all legal.

Phone Col 0427 481 632

Sorry not equipped to carry shipping containers or livestock.

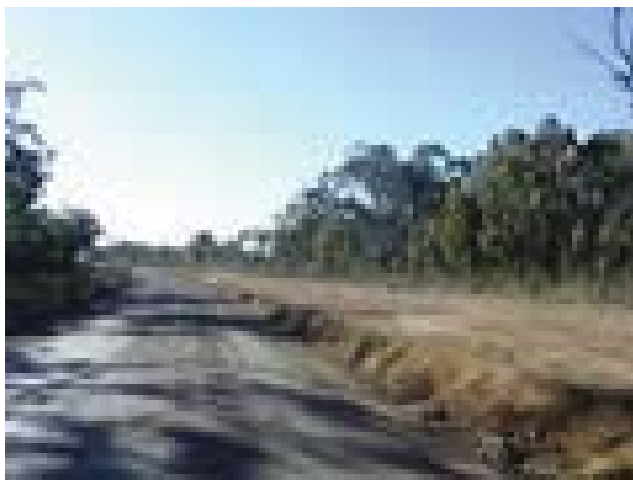
Cut out and keep this ad - handy in your car for emergencies

Main Road 92 Upgrade, Nowra to Nerriga

Earlier this month Stage two of the MR92 upgrade, the nine kilometres which extends from the Touga Road junction (just east of the Bulee Mountain area at Billy's Hill) to Nerriga, was officially opened at the Bulee Bridge site. This stage, constructed by NACE Civil Engineering Pty Ltd included major improvements, widening, realigning and sealing of the steep and narrow section of road from Bulee Gap to the Endrick River. A feature of this section of the upgrade was construction of the four span concrete bridge near Bulee Gap that was opened to traffic in July.

The new bridge and high retaining walls have been constructed to conserve the "beehive" rock formations and colonial heritage features in the Bulee Heritage Area at the western end of Morton National Park. Stone retaining walls and remnants of the winding 1856 Wool Road have been carefully preserved and the old road has been retained without revegetation as an historical record. In addition, on the descent to the Endrick River a fauna underpass with "floppy top" fencing allows koalas and other native animals to cross the new road safely.

Site work on Stage three, the final stage of the 54 kilometre MR92 Upgrade commenced in July. This \$25 million contract, awarded to NACE Civil Engineering Pty Ltd, is expected to be completed in late 2010. Extensive sections east and west of Sassafras have now been cleared and the scope of the improvements to the road alignment can now be appreciated. In these sections earthworks are progressing well and pavement construction has commenced at the eastern end near Tianjara Falls. As earthworks are completed traffic will be switched progressively to the new alignment. Clearing work is anticipated to start in the Sassafras area next month.



This stage will deliver 20 kilometres of upgraded road from Tianjara Falls to Billy's Hill near Bulee Gap and will link the first two stages of the upgrade. Much of this stage of the construction is adjacent to Morton National Park or through Sassafras. While most of the road works closely follow the existing alignment there will be major improvements to the steep incline east of Sassafras.

Stage one, the 24 kilometres from Hames Road, Nowra to Morton National Park, was finished in June 2007.

Changes to road conditions

Motorists are advised to drive carefully throughout the construction area as the road conditions are variable on the remaining sections of gravel road. Traffic will be switched to the new alignment progressively as sections are being completed. Particular care should be taken in wet weather as the unsealed sections of the road can be slippery and suitable only for 4WD vehicles.

For current road conditions visit www.rta.nsw.gov.au/trafficreports

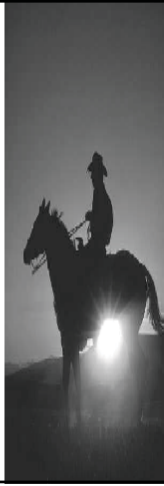
SAMCOD EQUINE SERVICES

OFFERS A ONE STOP HORSE SERVICE:

- BREAKING IN
- LESSONS FOR THE BEGINNER
- RETRAINING THAT PROBLEM HORSE
- A FULL FARRIER SERVICE.

Give us a call and discuss your needs. Our rates are very reasonable.

CALL CARL ON 48 444225 OR 0411 517758



Highland Stockfeeds

223 Brisbane Grove Road

- Variety of small bales of hay
- Stockfeeds
- Mineral Blocks
- Dog & Cat Food

0428 223 677



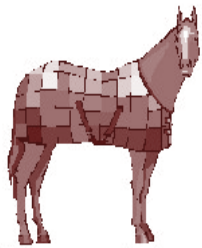
Smart Stitch

Enquiries Welcome

Christine Sykes

Ph: 4844 5594

Windellama



Horse Rug Repairs

Rugs MUST be free of mud & poo
or a surcharge will apply

FIFE'S STOCK FEEDS



Round Bales
Pasture Hay
Square 8x3x2
Lucerne Hay
Rye & Clover



Also suppliers of Bird Seed, Dog Food, Cat Food,
Wheaten Chaff, Oaten Chaff, Stud Mix

51-52 Knox St Goulburn

(02) 4822 3111

Church News

Catholic Church Services

Parish Priest: Fr. Dermot McDermott
Assistant: Fr. Sunhil Kadaparambil

Presbytery & Parish Office
Phone 4821 1022

Sunday Mass will be at 9am. on the 3rd
Sunday at St. Patrick's **Marulan**.

Mass Times in **Goulburn** are:

Saturday Vigil Mass:

5pm. at St. Peter & St. Paul's

Sunday: 8am. at Our Lady of Fatima,
Nth. Goulburn

Sunday: 10am. at St. Peter & St. Paul's

St. Joseph's Church, Tarago

1st Sunday of each month 10.30am

Enquiries: 4842 2444



St. Bartholomew's Anglican Church

Anglican Church Services

OCTOBER

St. Mark's Bronte

Sunday 11th – 11.30am

St. Bartholomew's - Windellama

Sunday 25th – 11.30am

NOVEMBER

St. Mark's - Bronte

Sunday 8th – 11.30 am

There will not be a service at St.
Bartholomew's in November

Our Rector Robert Lindbeck may be
contacted on 4821 3631

Although both our Churches are
nominally Anglican, worshippers of all
denominations are welcome at all
services.



GOD'S REMNANT ASSEMBLY AUSTRALIA (GRA Australia)

Would you like to know more about Jesus?

Do you want to know the LIFE He has for you -

your destiny, your gifts, your purpose?

We are a husband and wife team with GRA, a trans-denominational
missionary movement. GRA works around the world, including Iraq, Iran,
Afghanistan, Nigeria, Sudan and is new to Australia. We believe Australia
needs the Word, fresh and new, as it is being shared around the world and
setting lives alight with the beauty and Truth of Jesus.

We have started a home Church in our community and introduce ourselves –
Bunja and Judith Smith. If these words have stirred or touched you please
contact us to hear more about this Ministry that is new to Australia:

by phone - 0401 912 193 or by post -

Pastors Bunja and Judith Smith

Gods Remnant Assembly Australia

GPO Box 1695
Canberra City ACT 2601

Be part of this exciting work in our community:

Sunday morning - we sing and study His profound truths

Tuesday evening – we plan the ministry, outreach and study His Word

Thursday evening – we praise and enjoy a power prayer hour.

Jesus' love never fails. John 15 : 12

WANTED

Story contributions of community &/or
general interest on a regular basis

Just contact Denise on 4844 5087

or Gayle on 4844 5156

and discuss with them or email

windnews@goulburn.net.au

Coming Events...

All at Windellama unless otherwise advised.

November

- 3 Melbourne Cup
7 Small Farms Field Day

December

Do you have new neighbours?

Why not pass on your copy of the Windellama News to them. This is probably the best way for newcomers to find out about the local activities and also to find about our local trades and services.

Fees for Hire of Hall or Supper Room at Windellama Hall

*HALL	ALL DAY	\$200
	DAY 4hrs or less	\$100
	EVENING/NIGHT**	\$200

*Includes Supper Room & Kitchen

** \$2 per hour for heating

SUPPER ROOM	(Includes Kitchen)
ALL DAY	\$80
DAY 4hrs or less	\$40
EVENING/ NIGHT	\$100

Use of the premises prior to your booked function will incur a surcharge of Supper Room Fee

To Book please ring W. P. A. Secretary,
Frances Knights on 4844 5157

TARAGO TRANSFER & DRUM MUSTER STATION

Open Friday to Monday
8.00am - 4.45pm. Card required for
household waste, or fees apply.

Free recycling of the following:
Plastics, tins, oil, batteries, glass,
paper and cardboard.

Free recycling also of Chemical Drums
providing they are empty, triple washed and
have the lids removed

Tipping Fees for Tarago

Sorted Waste - Domestic Residents only

Car, station wagon, small ute or small trailer	\$10.00
Medium trailer, large ute or 1-tonne truck load	\$15.00
Large trailer load	\$25.00

Unsorted Waste and Non-Residents Waste

Garbage & trade waste (uncompacted, per cubic metre)	\$62.00
Garbage and trade waste (compacted, per cubic metre)	\$ 108.00
Other unsorted waste - 2 x sorted rate per category	

Hard fill demolition waste not accepted at Tarago

Animals — Note: Animal carcasses cannot
be dumped at Tarago as there are no facilities
for burial please refer to Goulburn Mulwaree
Council for details on availability in this area.

Car Bodies \$40.00

Tyres — Car Tyres (each) - per tyre	\$ 7.00
Motorcycle tyres (each)	\$ 6.00
Truck tyres (each) - per tyre	\$20.00
Tractor tyres (each) - per tyre	\$75.00

Community Information

Windellama Progress Association

Cathy Meehan (President) 4844 5554
 Frances Knights (Secretary) 4844 5157

Windellama Rural Fire Brigade

Jim Meehan (Captain) 4844 5554
 Rex Hockey (President) 4844 5147
 Ellen Sylvester (Sec) 4844 5407

Windellama Field Day Committee

Cathy Meehan (Secretary) 4844 5554
 Frances Knights (Treasurer) 4844 5157

Windellama News

Denise Johnson (Editor) 4844 5087
 Gayle Stanton (Editor) 4844 5156
 Cathy Meehan (Sec / Treas) 4844 5554

Windellama Garden Cub Inc.

Pam Williams (Treas) 4844 5194
 Lynn Stockford (Sec) 4844 5029

Windellama Hall Country Markets

Bob Shaw 4844 5001

Windellama Historical Society

Rex Hockey (President) 4844 5147
 Joanna Croker (Co-Secretary) 4844 5125

Windellama Landcare

Warren Yates (President) 4844 5350
 Sandra Greville (Secretary) 4844 5047

Windellama School P&C

Terry Hannan (President) 4844 5337
 Heather Caulfield (Secretary) 4844 5120

Nerriga Landcare

Di Roberts (President) 4844 5344
 Helen Rolland (Secretary) 9555 8676

Nerriga Rural Fire Brigade

John Rolfe (Captain) 4845 9160
 Justin Parr (Snr. Deputy Captain) 4845 9129
 Marie Kennedy 4845 9126

Jacqua Creek Landcare

Annabel Scholes 4844 4383
 Julia McKay (Secretary) 4844 4457
 Diann Moran (Treasurer) 4844 4291

Wires (wildlife rescue)

Marian Pearce 4844 5244
 Southern Tablelands WIRES 4822 3888

Community Health Goulburn

4827 3913

Community Transport

4823 4499

Justice of the Peace

Linda Shannon 0429 980 141

"Stirlingbrae" 3186 Windellama Road, Windellama.

**FOR ALL FIRE
 OR EMERGENCIES
 PHONE 000**



Important Phone Numbers

Rural Fire Brigades

Windellama	Jim Meehan	4844 5554
Tarago	Des Kingston	4849 4503
Taylor's Creek	Dave Elward	4849 4240
Mt Fairy	Greg Brooke	4849 4681
Bungonia	Ian Tapper	4844 4460
Gundry	Tony Kent	4822 5078
Nerriga	John Rolfe	4845 9160

**PHONE 4844 5359 or
 CHANNEL 21/209 Base**



Windellama SES First Aid

Graeme McFarlane	4844 5506
Kevin Muffet	4844 7143

Police

Tarago Station - Snr. Constable Brad Carey	4849 4411
---	-----------

Goulburn Base Hospital

4827 3111

Ambulance

000



**For Mobile users
 in case of emergencies dial**

112

And it will be treated as a 000 call



October 2009

MON	TUE	WED	THU	FRI	SAT	SUN
			1	2	3 Yoga at Nerriga	4
5 Queens B'Day School Holidays	6 Willow Glen Gardeners	7 SES First Aid	8	9	10 Yoga at Nerriga	11 St. Marks Pink Ribbon Breakfast @ Tarago
12	13 Hall Craft arvo	14	15	16	17 Yoga at Nerriga	18 Markets at Hall
19 Progress Meeting School Resumes	20 Hall Craft arvo	21	22	23	24 Yoga at Nerriga Fire Brigade Training & Meeting	25 St. Bart's
26	27 Hall Craft arvo	28	29	30		

**For details of times and places - see articles inside this issue
Emergency phone numbers are on the back of this page.**