

Huntsman Spiders

Huntsman spiders in Australia belong to the Family Sparassidae and are the large hairy spiders that are often seen either under bark or other narrow spaces outside the home or they are just as comfortable inside scooting along your walls. There are 13 genera and 94 described species of Huntsman, but even though sometimes wrongly called Tarantula, they are very timid and relatively harmless to humans. A bite from one of these spiders is supposed to be a little painful but not poisonous, you would have to be very unlucky to be bitten as they always prefer to escape than fight.



The spider in the photo with this story seemed to be very happy taking refuge in our hallway, and we generally tolerate their presence in our home. They often come in when there is rain about, so probably just trying to stay dry, and they never give us much of a problem.

If you really can't stand them in the home the best way to catch them is to simply place a large plastic cup or similar over the top then slide a piece of cardboard underneath and take the whole lot out into the garden. This is much easier than cleaning a squashed spider off your wall.

The mating courtship is lengthy and involves a lot of caressing and other rituals.

The mother Huntsman lays about 200 eggs into her silken egg sac and stands guard over it until her young are hatched. After the spiderlings hatch the family stays together for a

few weeks until they go their separate ways. 200 children would certainly wear anyone out.

Huntsmans live for around 2 years and their food is insects and other invertebrates.

Windellama Hum

Low frequency industrial noise has been a problem in many areas of the western world over the last 40 years or so. It is not the sort of noise that you can get away from by closing a door, it seems to come from all directions and is often described as sounding like a distant diesel engine, throbbing or pulsing of the noise can be a feature.

Scientific studies have shown it is not caused by Tinnitus or any other health issue related to hearing.

At first you may need to consciously listen for the hum, at night is the easiest time as other background noises are less, and it is just at the threshold of the lowest tones that you can hear. Once you are familiar with it, it can be a real nuisance.

When these noises have been a problem for a community they have been given names such as the "Taos Hum" for the noise heard in Taos, New Mexico or the "Bristol Hum" in Bristol in the U.K.

There is a hum problem in Windellama, the cause is still unknown but it is being heard by a number of households that I know of. It is NOT a local noise. The E.P.A. have already done some preliminary testing with conventional noise logging equipment and the results were inconclusive.

The Hum can be present for a week or two, 24 hours per day and then disappear for a few days, then for some reason return. If you think you are experiencing the Windellama Hum please contact me on (02) 4844 5149 or by email as we need a bit more evidence of the presence of the Hum before the EPA will return to do more testing with their new low frequency noise logger.

Taken from the July 2005 issue

*Need a Doctor
today?*

*Goldsmith Street
Surgery*

Call 48217445

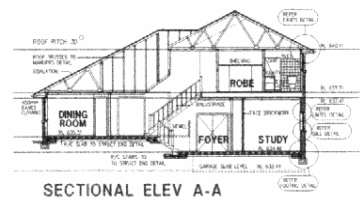
(on Fridays call before 10am)

*We are open until 7pm
Mon-Thurs*

ACOM DESIGN

PO Box 806,
Goulburn 2580

Yarralla,
Oallen Ford Rd
Bungonia 2580



SECTIONAL ELEV A-A

Robert C Everingham

Building Designer & Draftsman

New Homes, Alterations & Additions
Duplex, Villa, Townhouse Developments
Rural, Commercial, Industrial Buildings
Free Quotes - Competitive Rates - Prompt Service
Energy Efficient (SEDA), Eng Dwgs: Mech, Struct, HVAC

TEL 4844 4321

MOBILE 0417 682 022

FAX 4844 4323

EMAIL acomdesign@bigpond.com.au



MEMBER
STANDARDS AUSTRALIA



MEMBER
BUILDING
DESIGNERS
ASSOCIATION
OF NEW SOUTH WALES INCORP

PSYCHOLOGY COUNSELLING FOR:

Grief & Loss –
Personal / Marriage / Family issues
Mediation & Conflict Resolution
is now provided to the Windellama
and neighbouring communities,
by local Psychology Counsellor,
Fayez Ramzy Nour, J.P.,

who will be available on Saturdays,
between 9am-12noon
at Roberts Road, Oallen

Appointments for private &
confidential consultation/counselling
are made by prior arrangement with
Fayez on 0414 616 960

**This service may be provided at
no cost to you**

**Your Local community,
caring about you & your welfare**

BOB RUDD FUNERALS

73 Reynolds Street Goulburn NSW 2580

Phone 4822 4400



Your Local Family Owned
Funeral Directors
Bob & David Rudd
and daughter Shane

**WE WORK HARD TO GAIN YOUR
CONFIDENCE & TRUST.**

Introducing our New Chapel with on sight parking
Pre-paid funerals available as well as pre-arranged funerals.

Just ring and we will come to you

Servicing Windellama, Goulburn, Mulwaree Shire, Marulan,
Gundaroo, Braidwood, Gunning, Dalton, Tallong, Bungonia,
Taralga, Yass, Braidwood

Monumental work - Just ring us for a quote

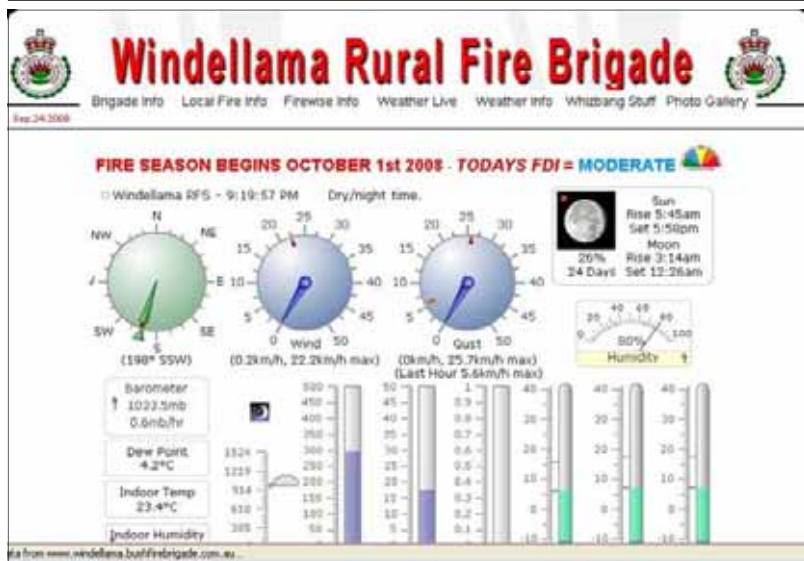
We welcome your enquiries.

**** SUREPLAN as little as a \$1 a week Funeral Fund****

We welcome your enquiries.

Contact our office 4822 4400

Windellama Rural Fire Brigade's new Information website.



LIVE weather and fire information should be checked daily, particularly as fire season begins 1st October and all the latest FDI and local important messages will be updated daily.

Along with the fact you can download all the RFS publications to "prepare for the season ahead" and for those involved in the brigade, you can even check out the maintenance roster and latest notices on training and other activities.

The brigade will be displaying the website features at the Field day, so if people have any questions or suggestions they can catch up with us there.

NSW Fire Danger Rating

The fire danger index used on signs tells you the potential for a fire on any given day. NSW is broken into NSW Fire Areas, and each area has its own daily Fire Danger Rating which normally comes into force from mid night to mid night for each day. How every extreme cases this can change. Here's what the ratings mean:

FDI	Spread (km/h)	Description
0-2	0.3	High humidity, rainfall and the bush is wet. Head fire stopped by roads and tracks.
3-7	0.6	High humidity, rainfall, little wind and bush is damp. Head attack easy with water.
8-19	1.3	Warm conditions, some wind and the bush is dry. Head attack generally successful with water.
20-49	2.8	Hot, windy conditions and the bush is dry. The use of open fires is prohibited. Head attack will generally succeed for FDI up to 40. For FDI greater than 40, head attack may fail except in favourable circumstances and close back burning to the head may be necessary.
50-99	6.4	Very hot, windy and the bush is very dry. Fires may be unmanageable. Direct attack will generally fail. Back burn from a good secure line with adequate makeover and equipment. Flanks must be held at all costs.



Windellama Rural Fire Brigade
 Brigade Info Local Fire Info Firewise Info Weather Live Weather Info Whizbang Stuff Photo Gallery
 Sep 24 2008

Windellama Rural Fire Brigade - Online Contact Form

*Name:
 *E-Mail:
 *Contact Telephone Number:

Nature of Enquiry

Please enter your message below:

[SUBMIT THIS REQUEST]

These are just some of the pages you will see when you log into your local Brigade's website.

Windellama Rural Fire Brigade
 Brigade Info Local Fire Info Firewise Info Weather Live Weather Info Whizbang Stuff Photo Gallery
 Sep 24 2008

Windellama Rural Fire Brigade - Training Officers Report

Our last training day on 23/8/08 was well attended. We had a period of discussion on radios with many members purchasing some fairly impressive handheld units from a member of the Bungonia brigade. We then ran a theory session on Grass Fires an convoy firefighting, thanks to the expertise and experience of Lynton Roberts. Five of our firefighting units and crews then headed for the oval at Windellama Hall for a grass fire scenario. All this in preparation for our next training day and the upcoming fire season. NEXT TRAINING DAY: will be held on Saturday 27/8/08 starting at the fire shed at 12 noon. Weather permitting, we will be then heading off to a nearby property where we will conduct a controlled burn and training in convoy firefighting techniques and strategies using real red stuff. Please attend if possible - this form of firefighting is the most common situation you will be involved with in the area - practice and familiarity with the methods and equipment is most important. Hope to see you there.

Raine & Horne Goulburn

Active in Your
Community

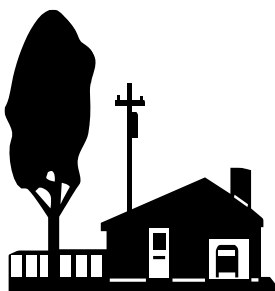


We are always
looking for
properties

FOR SALES & BUYERS

No obligation appraisals

Ring Alan Gale
(B.H.) 4821 9088
(A.H.) 4821 7512 or
0408 628 331



To Sell or Buy in our area contact
Judy Alcock 0439 603 234
www.taragorealestate.com

4 Wallace Street, Tarago
Ph: 4849 4297 Fax: 4849 4382
Email: judy@taragorealestate.com



Stock Clearance

- 200cc R/T registered
- 250cc Road bike
- 250cc Trail
- 250cc sport quad
- 500cc 4x4 farm quad
- 800cc Farm Utility

TARAGO MOTOR CYCLES
Ph: Phill Keightley 4849 4445

Tarago Service Centre

Open 7 days • Ph: 4849 4421

Hot Food – Gas – Ice – Batteries
Community Post Office – Newspapers
Milk – Bread – General Groceries

UHF 20

Tarago Auto Repairs

Phill Keightley
Ph: 4849 4445
Fax: 4849 4435
Mobile: 0437 911 295





Inside Your Local Council

.... Keeping you in touch with the latest from

CAROL JAMES was declared elected to position 1 on 22 September 2008

NINA DILLON was declared elected to position 2 on 22 September 2008

KEITH WOODMAN was declared elected to position 3 on 22 September 2008

DENZIL STURGISS was declared elected to position 4 on 22 September 2008

NEIL PENNING was declared elected to position 5 on 22 September 2008

BOB KIRK was declared elected to position 6 on 22 September 2008

MAX HADLOW was declared elected to position 7 on 22 September 2008

ANDREW BANFIELD was declared elected to position 8 on 22 September 2008

MARGARET O'NEILL was declared elected to position 9 on 22 September 2008



Kids hit the decks for skateboard clinics

Looking for things to do this coming school holidays? Why not grab your skateboard and head to Goulburn Skate Park for the highly popular 'StreetWise' skateboarding workshops.

Places for participants are limited, but those who miss out will still be able to watch the action. The cost is \$40 per participant, which has been subsidised by Goulburn Mulwaree Council.

Council's Parks Technical Officer Debbie Sibbick said the two days of workshops would provide Goulburn's skateboarders with safety awareness and even some new skills.

"The Streetwise program groups participants in sessions according to their ability, which cater for Beginner, Intermediate and Advanced," Ms Sibbick said.

"The program targets girls and boys aged between 6 and 15 years old. These interactive coaching sessions are led by some of Australia's best freestyle sporting athletes and nationally recognised accredited coaches, so you know your child will be in good hands.

"All participants in the Streetwise program must wear a helmet at all times during the workshops."

The StreetWise workshops will be held at Goulburn Skate Park Thursday 2 and Friday 3 October, with sessions running for four hours over two days.

All StreetWise participants will also receive 2008 membership with Skateboarding Australia, personal accident insurance coverage, Simbyotik discount voucher, Slam skateboarding magazine, mania magazine, StreetWise school ruler, lots of stickers and more.

Simbyotik skateboards, protec and c1rca footwear encouragement prize packs will also be awarded.

To participate in one of the StreetWise sessions, be one of the first to register at either the Goulburn Mulwaree Civic Centre Reception or Library, Sportspower Goulburn, Liquid Blue or by calling 4823 4444.

For more information visit www.skateboardingaustralia.org.au

Enjoying visitors ?

Bring them in to the

Goulburn Brewery

for a couple of hours

- Interesting conducted tours
- 11 a.m. & 3 p.m. Sundays
- Lunch and Dinner daily
- Morning & Afternoon Teas
- Fine Ales and good old-fashioned food
- Craft markets every 4th Saturday

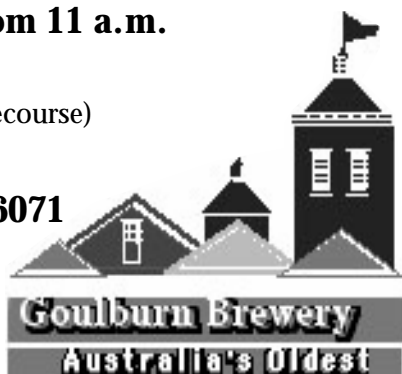
OPEN daily from 11 a.m.

Bungonia Road

(Beside the old Racecourse)



Tel. 4821 6071



Wattle Glen
COTTAGE
1889



TEA ROOM

ANTIQUES

81 GEORGE STREET MARULAN

Taste our Home Cooking

Friendly Service

Old World Atmosphere

See the Antiques

Talk History with the Owner

Special prices for group bookings & coach groups

PHONE: 4841 1336 OR 0428 774 459

CLOSED WEDNESDAY EXCEPT FOR BOOKINGS

Tallawong Boutique Cabins

Affordable luxury in the bush.

Fully equipped luxury cabins .Queen & Triple available. Solar Heated Pool.

Building in the Area? Ask about our discount price.

Now Open at Tallawong!

Pink Lotus Day Spa

Massage, Reiki, Aromatherapy, Waxing,
Manicure & Pedicure. Gift Certificates
available. Discount for Locals.

Appointment Necessary.

Oskar's Cafe

Lavazza Coffee, Full range of teas,
Cakes, Light Lunches or pop in
for takeaway. Open Thurs – Sun.

10.00 – 3.00pm.

445- 465 Sandy Pt Rd, Windellama PH: 02 48445648

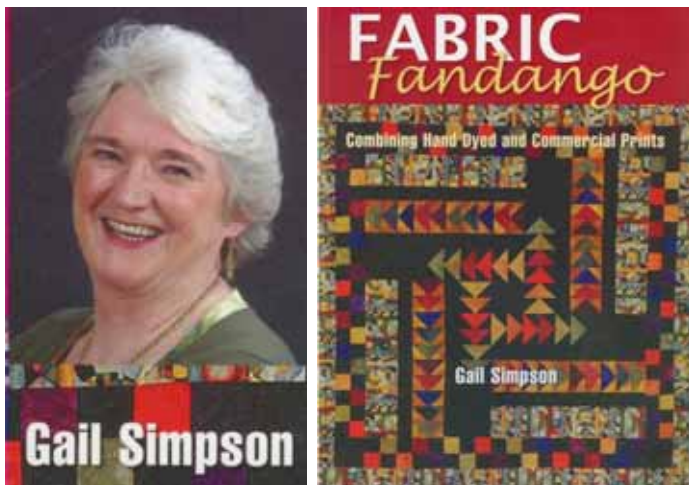
ARTS & CRAFTS

Goulburn's 1st Annual Quilting Jamboree will take place at the end of October. It is being held at the Best Western Centretown in Lagoon Street and is being co-ordinated by Adelle Higham from The Sewing Patch. The guest tutor is Gail Simpson from Tahmoor.

The organisers are looking forward to a couple of great two-day workshops with Gail on Wednesday 22nd and Thursday 23rd October; and Saturday 25th and Sunday 26th October 2008. The workshops will include tips, tricks, tools and techniques that Gail has learned over her many years in the industry.

Gail has wonderful skills with colour, which she demonstrates in her hand-dyed fabrics and in her book 'Fabric Fandango'. Some of the tools used in the class are renowned US quilter Kaye England's Nifty Notions rulers. Kaye supports Breast Cancer Research in the US through the sale of her rulers.

Numbers are limited for these workshops so contact Adelle today on 48225559 to secure your spot.



BUNGONIA QUILTERS

Meet every Monday morning 9am to 1pm
at Bungonia Hall

If you want to learn how to patchwork come along, have a cuppa and find out what you need to bring to get you started on this addictive craft.

For enquiries phone:

Sharon Alessi 4844-5149
Cherie Jenkins 4822-4241
Sandra Williams 4844-4369

NSW Arts Funding Applications Open

The 2009 Arts Funding Program has called for submissions. The Arts Funding Program has been established as a result of a recent review of the NSW Cultural Grants Program and applicants should find the application process far less complicated to complete. The review of the NSW Cultural Grants Program called for changes to make the process far more user friendly.

The changes include:

The introduction of a single application for program funding;

A reduction in the number of application funding categories, resulting in a simpler, easier-to-use application process;

Applications based on purpose rather than art form; and

Moves towards more results based reporting.

The Arts Funding Program supports organisations and venues to deliver performances or exhibitions, business or audience development projects and arts and cultural infrastructure and activities.

The closing date for applications is Friday 10th October.

2009 Arts Funding Program Guidelines and the Program Funding Application and Project Funding Application forms are available for download from the Arts NSW website at www.arts.nsw.gov.au.

Craft Afternoons

Meet at Windellama Hall on Tuesday afternoons from 1pm to 4pm - All welcome.

There will be no craft afternoons on the first Tuesday of each month due to another meeting. For more information contact Irene on 4844 5214.

Goulburn Spinners & Handweavers

Are now at 1/67 Sloane Street, Goulburn
at the rear of Southern Regional Community College. For further details, contact Secretary, Warren Yates on 4844 5350

SHEPHERD'S HILL NURSERY

321 George St, Marulan

Ph 4841 1404

Fax: 4841 1454 Mobile: 0413 047 105

Look for the house on the hill

For all your garden needs &
acclimatised plants

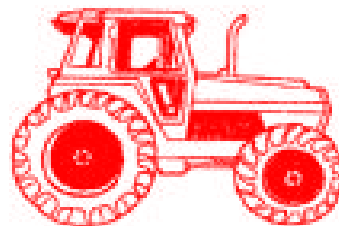
Potted colour, Seedlings, Bulbs, Fruit trees,
Ornamental trees, Windbreakers,
Shrubs and more
Potting Mixes & quality soils & mulches.
Pots, Statues & Gifts

Gift vouchers & Eftpos available

We are members of NGI NA
Nursery & Garden Industry NSW & ACT



A.F. & M.R. DAVEY TRACTOR & MACHINERY REPAIRS



"IF IN DOUBT, GIVE ARTHUR A SHOUT"

ARTHUR DAVEY

PH: 4822 8441

MOB: 0409 651 517

274 Mountain Ash Road, Goulburn



Nirvalley Homestead Nursery

629 Cullulla Road, Tarago • 4849 4481

Specialising in plants to suit our climate.

Hot, dry, cold, frosty, windy ... we stock plants to suit
the difficult conditions in our area, and our plants are
grown locally so they are all acclimatised.



- Native and exotic shrubs
- Windbreak and hedging plants
- Unusual trees and plants
- Advanced trees
- Farm trees & Tube stock
- Special orders

Peter & Caroline Campbell
• Gift Vouchers available

OPEN Mon & Fri 10am—3pm, Sat & Sun 8am—5pm. Mob: 0422 112 779



Great Plants - Great Prices

In Your Garden

From Irene Turner



October in the garden

Blossom trees should be flowering now. Fruit trees such as peaches, nectarines and plums and some pears should also be flowering. The peaches and nectarines should have been sprayed in September for leaf curl.



Roses should be growing new leaves now. Feed them to help with the new growth.



Vegetables to sow now:

Seeds of carrots, parsnips, beetroot, peas, cabbages, silverbeet, radish.

Cucurbits – cucumber, zucchini, marrows, melons (rockmelon & watermelon), pumpkins, squash.

Parsley, capsicum, sweet corn and tomatoes; keep in a warm place protected from late frosts, or keep tomatoes indoors until the ground warms up.



Beans – both climbing and dwarf varieties; keep water up to the beans when flowering so you will get a good crop.

Flowers:

Seedlings of ageratum, alyssum (sweet Alice). Seeds of astors, balsam, carnations, cosmos, dianthus, gypsophila, larkspur, lobelia, Livingstone daisy, marigolds, nasturtium, pansy & petunias, phlox, schizanthus (poor man's orchid), portulaca, snapdragon, verben.

Bulbs – when spring flowering bulbs have finished flowering this month, feed them with complete fertilizer for next years' flowers.

Dahlia – you can get them in seedling form, mainly dwarf varieties. The taller dahlias, purchase tubers, these taller dahlias will need staking.



Fruit Fly Trap

1 litre clear plastic container

Wrap a 2.5cm wide band of black tape evenly around the bottle, about 5cm from the base.

Next add 5cm wide tape just above the first. This tape should be bright yellow, 5cm above the first.

Then add a third band of the black tape, 5cm above the second.

Drill a line of 6mm holes, 2.5cm apart; through the centre of the yellow strip all the way around the bottle.

Pour 50:50 mixture of water and apricot nectar into the bottom of the container to the depth of 5cm.

Place the cap on the bottle and hang in the fruit trees from December to March.

AUSTRALIAN NATIVE PLANTS SOCIETY CANBERRA REGION

SPRING PLANT SALE

8.30 am to 2.00 pm

Saturday 11 October 2008

The Society's annual Spring Plant Sale will be held this year on 11 October 2008 in the southern car park of the Australian National Botanic Gardens.

The usual wide range of high quality native plants for new and established gardens will be available including local species and cultivars suitable for the Canberra climate.

Prices range from \$4 to \$7, and there is a 1% surcharge on credit card transactions.

**GOULBURN
AND RURAL**



**PRODUCE
SUPPLIES**

GILMOUR STATION PTY LTD T/A
A.C.N. 001-792-632

**149-159 SLOANE STREET, GOULBURN, N.S.W. 2580
PHONE (048) 21 3655, 21 3616. FAX (048) 21 8852**

**Goulburn Produce & Rural Supplies – Your
Leading Rural Outlet for:**

POLY PIPE – IRRIGATION – PUMPS

SPRAYERS – ANIMAL HEALTH

WEED KILLERS

POOL CHEMICALS

SOFT AND HARDWOOD TIMBERS CHAIN

SAWS – MOWERS

BRUSH CUTTERS – DOG FOOD

GRASS SEEDS – SUPERPHOSPHATE

DYNAMIC LIFTER

BUILDING AND PLUMBING SUPPLIES

R M WILLIAMS BOOTS – CLOTHING

GENERAL WORK CLOTHING

BOOTS – RUBBER BOOTS



149-149 SLOANE STREET, GOULBURN,

PHONE (02) 4821 3655

FAX: (02) 4821 8852

**GOULBURN PRODUCE &
RURAL SUPPLIES**

ONE STOP SHOPPING

**GOULBURN
AND RURAL**



**PRODUCE
SUPPLIES**

GILMOUR STATION PTY LTD T/A
A.C.N. 001-792-632

**149-159 SLOANE STREET, GOULBURN, N.S.W. 2580
PHONE (048) 21 3655, 21 3616. FAX (048) 21 8852**

PAYROLL PREPARATIONS

We look after all payroll needs
for small to medium businesses

Saving you time and money

Gordon & Roslyn Matley

Ph. 4829 5272 ~ Fax 4829 5288

Email: payrollst@bigpond.com



Southern Districts Piano Service

**Pianos • Pianolas • Tuning • Repairs
Re-polishing • Removals**

Graham Price

02 4844 5329

Just LAW

Tarago Office

**Solicitors and Conveyancers
4 Wallace Street, Tarago NSW 2580**

Please phone Bungendore for an appointment

BUNGENDORE OFFICE
Unit 4/33 Ellendon St
(P O Box 368) NSW 2621
Ph: (02)62380192

ERINDALE OFFICE
Erindale Chambers
Comrie Street ACT 2903
Ph: (02) 62314700

JOHNSON & SENDALL

INCORPORATING MULLENS

SOLICITORS - CONVEYANCERS

13 MONTAGUE ST GOULBURN 2580

PH (02) 4821 1588

FAX (02) 4821 9850