



## WINDELLAMA PROGRESS ASSOC. HALL Inc.

A large, enthusiastic, group of volunteers met at the hall on Saturday morning with a long list "to do". The strong wind put a stop to the roofing repairs – we will wait for better weather – however the painting jobs were started and hopefully will be completed shortly.



The Goulburn Classic Riders Club will be visiting the hall on Saturday 25<sup>th</sup> October for lunch and judging of their bikes. The bikes will be on display and the community will be welcome to inspect them.

Planning for the Field Day is well advanced and we will be seeking volunteers for setting up on Friday and all the usual activities on Saturday. This is, of course, our major fund-raising event for the year and it is most important that it is a success. All the popular attractions from last year, live music, reptile awareness display, and of course lots of activities for the children, will be here again this year.

**The next meeting of the Progress Association will be held on Tuesday 21<sup>st</sup> October at 2.p.m. Everyone is welcome.**



**127 AUBURN STREET  
GOULBURN  
(Next door to Video Ezy)**

Local call dialup access Australia wide  
aDSL Broadband Office Services  
High Speed internet access & Wifi Hotspot  
Friendly, expert advice and support

Call **48229131**

<http://www.goulburn.net.au>  
[info@goulburn.net.au](mailto:info@goulburn.net.au)

## Compass Pet Heritage Cemetery & Crematorium



State of the art Crematorium for  
"Individual Cremations",  
Individual Burials, Memorial Walls,  
Viewings, Hearses & Showroom.

Enquiries, Appointments or Tours  
Ph: Mon-Fri (9-5) Sat (9-11)  
Ph: 4844 5588 or 1800 088 118

Open 7 days by Appointment only  
Nerrimunga Creek Road, Windellama

## ROVERS RETREAT

PREMIUM BOARDING KENNELS



Huge Individual Kennel s  
Very Competitive Rates  
Free Daily Exercise & Playtime  
Rural Setting on 100 Acres  
Collection & Delivery



"Upson Downs"  
Oal I en Ford  
NSW 2622



[www.roversretreat.com.au](http://www.roversretreat.com.au)

02 4844 5449



# Windellama Public School News

**email:** [windellama-p.school@det.nsw.edu.au](mailto:windellama-p.school@det.nsw.edu.au)

**Website:** [www.windellama-p.schools.nsw.edu.au](http://www.windellama-p.schools.nsw.edu.au)

**Phone:** 4844 5130

**Fax:** 4844 5265



## ORIENTATION FOR KINDERGARTEN 2009

Children who turn 5 before 31<sup>st</sup> July 2009 will be eligible to attend. Please ring for an information package.  
Dates for Term 4 are 24<sup>th</sup> October, 7<sup>th</sup> November and 21<sup>st</sup> November.

## EXCURSION TO NAN TIEN TEMPLE IN WOLLONGONG

As part of our unit on China this semester we organised an excursion to the Nan Tien Temple in Wollongong. Nan Tien is the largest Buddhist Temple in the Southern Hemisphere and their tours have become increasingly popular over the past few years! Students participated in a very informative tour of the temple and participated in Chinese cultural activities.



## TARALGA SPORTS DAY

Taralga Sports Day is one of the highlights of our sporting year. It is fun to catch up with lots of children from the small schools. The children participate in a 'March Past' to begin the day and then compete in age races, sack races, high jump, long jump, shotput and relays.



## EVENTS FOR TERM 4

Cricket Gala Day - Years 4, 5 & 6

3 day camp at Long Beach – Years 2 – 6

Orientation for Kindergarten and for Year 6 going to High School

Visit from the Electoral Commission

# WHAT'S HOT FOR winter

FROM BARBEQUES GALORE GOULBURN

'From stylish wood heaters..

## Norseman

NORSEMAN RANGE  
FEATURES:

- Clean Burn system
- Quality steel firebox
- Designed & made in Australia
- In-built models available



## CLEAN AIR

CLEAN AIR RANGE  
FEATURES:

- Patented quad burn firebox air redirection system
- Exceptional clean burn technology
- Patented heat exchange tubes



## SAXON

SAXON RANGE  
FEATURES:

- 8mm steel firebox
- Standard 3-speed fan for greater versatility
- In-built models available



## LOPI

LOPI RANGE  
FEATURES:

- Manufactured in the USA
- Durable construction
- Practical cooktop surface
- Clean burning convection



## NECTRE

NECTRE RANGE  
FEATURES:

- Simple but elegant styling
- Manufacturers of the 'Bakers Oven'
- Models to heat from 150 to 400sqm
- Radiant & convected warmth



## EUREKA

EUREKA RANGE  
FEATURES:

- Fire brick lined fire box
- Powerful 3 speed fan
- Large view glass window
- Large range of freestanding & in-built models



..to convenient gas fire options..

## EUREKA

EUREKA TOPAZ GAS  
LOG FIRE FEATURES:

- Woodheater appeal with the convenience of gas
- Freestanding or fireplace insert model available
- Heats up to 120sqm



## LOPI

LOPI DIRECT VENT  
FIREPLACE FEATURES:

- Realistic flame at low cost
- Easy zero clearance installation
- Choice of facias
- Natural Gas or LPG



## COONARA

COONARA HERMITAGE  
FEATURES:

- Freestanding, fireplace insert or in-built models
- 4 star energy rating
- Natural Gas or LPG
- Heats up to 100sqm



..we know heating inside out'



Wood buckets, log holders, fire screens.. we've got a huge range of fireside accessories!

Now's the time to get ready for winter. We've got Goulburn's biggest range of wood and flued gas heaters along with all the accessories and replacement parts to keep you warm this winter!

## BARBEQUES GALORE GOULBURN

388 AUBURN STREET GOULBURN PH: 4821 4885

E: bbqsgoul@tpg.com.au

OPEN 6 DAYS

# BARBEQUES GALORE

www.barbequesgalore.com.au



# Landcare Update



The next working bee for Windellama Landcare will be on Saturday 27 September at Oallen Ford where we will be concreting in steel posts to support another steel cable barrier. We'll meet at 9.30 am for a cuppa and a 10.00 am start. Lunch will be provided.



A group of students from the US, who are attending the University of Wollongong, visited the Windellama Landcare site at Oallen Ford last weekend. Their visit began with a talk at the Windellama Hall given by Allan Chapman about his rainfall and salinity readings taken at the Hall over a number of years and then Merv Cornish spoke about the Windellama Landcare group and how it began.



Accompanied by Landcare members Michael, John, Merv, Cathy, Andrew, Peter and Kerry and John Quarantino, the students and their teachers, Christine and Peter, then proceeded

to Oallen Ford where they planted, mulched and watered in 180 trees (eucalypts and acacias) and one hundred lomandra plants.

After lunch the group visited the Landcare farm forestry plot at the Cornish's, Adrook Farm. The students were also delighted to assist with the feeding of Shirley's poddy lamb Jimmy.



An important Landcare event is being held in Queanbeyan on 14 -18 November – Tending the grassroots: strengthening community environmental networks. See separate flyer or contact 4844 5047 for details.

**The Christmas meeting – the Annual General Meeting – will be held on Saturday 13 December at Adrook Farm.**

## **Willow Glen Road Gardeners**

**The next get together is at  
Sandra & Antony Greville's  
1135 Cullula Road  
Tuesday 7th October  
10.00am start**

Bring a plate for morning tea to share.

Bring some plants / cuttings / seeds  
to share if you can.

Exchange your knowledge with others  
Problems shared - problems solved.

**NEWCOMERS ALL WELCOME**

Any enquiries just ring  
Warren Yates on 4844 5350



# 2008 Willowglen 4X4 Challenge

## OCTOBER LONG WEEKEND

### 4th & 5th October 2008



#### EVENT FACILITIES

- 2WD access available
- Camping onsite
- No power or water
- Toilets and showers\* onsite
- Campfires (regulations permitting)
- BBQ food, snacks and drinks on sale
- Cash only (no credit cards)
- No pets or glass allowed

#### More Information

- 📍 Visit: [www.tlcc.com.au](http://www.tlcc.com.au)
- ☎ Call Tony Price on 0419 702 033
- ✉ Email: [challenge@tlcc.com.au](mailto:challenge@tlcc.com.au)

#### 4WD Team Challenge

2 exciting days of competition at **Willowglen**

TLCC Club Land  
15 minutes from Tarago NSW  
Follow the signs

**Gates open midday on Friday**

**Weekend:** \$40 per adult  
includes camping fee

**Day Visitor:** \$20 per adult

**Children:** Under 17 FREE  
must be accompanied  
by an adult

**Radio Controlled  
Rock Crawling Vehicle  
Display onsite**

**A fully CCDA  
sanctioned event**

(Cross Country Drivers Association)

Proudly  
presented  
by:



Toyota Land Cruiser Club of Australia, Sydney ABN: 49 003 174 785

Special thanks to sponsors



# WINDELLAMA VOLUNTEER RURAL FIRE BRIGADE



Report all Fires 000

Brigade enquiries 4844 5359

Yass - 6226 3100

## PERMITS REQUIRED 1ST October 2008 – 31ST March 2009

Contact Jim Meehan 4844 5554 or Lynton Roberts 4844 5118  
for ALL permit requirements No Burning-Off without a permit

Southern Tablelands Zone Yass 6226 3100 Phone 6226 3624 Fax  
Information can also be found on the RFS website [www.rfs.nsw.gov.au](http://www.rfs.nsw.gov.au)  
and our very own website [www.windellamarfs.com.au](http://www.windellamarfs.com.au)

### **Bush Fire Danger Season**

#### **1<sup>st</sup> October to 31<sup>st</sup> March**

With the Bush Fire Danger Season due to begin on 1<sup>st</sup> October to 31<sup>st</sup> March there are precautions that must be taken. More information can be found by accessing the Rural Fire Service web site ([www.rfs.nsw.gov.au](http://www.rfs.nsw.gov.au)). During the Bush Fire Danger Season, fires in the open air are restricted. This means that barbecues and camp fires may only be used under certain conditions.

### **Total Fire Bans**

Total Fire Bans are declared during the Bush Fire Danger Period and are notified to the public on radio and television. This means that no fire can be lit during this period. Remember if you fail to comply with the fire regulations, you can be fined up to \$5,500 or twelve months jail.

Take Care when using vehicles. Although we have had some good rain lately care is still needed when using vehicles in long dry grass.

**Motorised machines** driven or **used in any grass**, crop or stubble must be fitted with safety guards so constructed as to prevent any heated areas from coming into contact with

combustible matter.

### **At the Open Day 21<sup>st</sup> September**

The Open Day on Sunday 21<sup>st</sup> September was good success with Dave Edworthy there to explain the advantages of the Brigade's website and give demonstrations on how to use the site [www.windellamarfs.com.au](http://www.windellamarfs.com.au). There were children's activities and of course the colouring in competition from the students of Windellama Public School, what vibrant colours and creative children we have in our area. Tina Richardson won the prize for the junior section and Lanais Satchell won the senior section. Well done to all the students.



### **Training**

For information or enquiries on training contact the Captain Jim Meehan on 4844 5554 or Wayne Back on 9792 5726. The next training session in October will be on Structure firefighting.

### **General Meeting**

25<sup>th</sup> October 2008 7:30pm

### **Training**

25<sup>th</sup> October 2008 1:00pm

Till next time **please drive carefully** and take care, see you all at the next meeting.





# Goulburn Off Road Carts

[www.offroadcarts.com.au](http://www.offroadcarts.com.au)

## 150cc Twister - Twin Seat

(UM 150 1.1 Hammerhead)

(250cc & 650cc models also available)

ONLY  
\$3630



FREE DELIVERY

DON'T MISS OUT  
PLACE YOUR  
ORDER NOW!

### Features:

Safety, stability & quality  
Front & rear lights, plus indicators  
Front & rear disc brakes, 4 point harness seatbelts  
Seats 2 adults, comfortable bucket seats (adjustable)  
All-terrain tyres, Parking brake.  
Goes all day on 7 litres fuel tank  
4 coil suspension (adjustable)  
Automatic chain driven CVT with reverse  
Towbar & mudguards.  
Quiet 150cc 4 stroke electric start  
Twin horns & 12 volt outlet  
Large carry rack, fits hay bale  
Sales, parts & service 6 days. Lay buy plan available

## GENERATORS

- \* 10KVA
- \* 1500 RPM
- \* 3 Cylinder Silent Diesel
- \* Engineered with Heavy Duty Australian Filters
- \* Ideal for solar back up
- \* All sizes available , 12mnth warranty

SPECIAL  
\$5500



OPEN 6 DAYS

**ENQUIRIES & SALES - PHIL BONSER**

565 Mt. Baw Baw Rd, Goulburn NSW 2580

**Mobile: 0419 694 148 Ph: (02) 4821 0397**



### P&C: Gearing up for Term 4

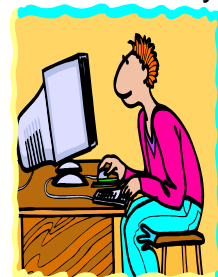
As predicted last month, much of the September P&C meeting was dominated by discussions about the Field Day. As a result arrangements for the Cow Pat Lotto are now well under way and parents can expect a call for help in selling tickets when school resumes after the upcoming holidays.

We will also once again be organising an animal petting area as part of the children's activities at the field day. To achieve this however we need to obtain some animals, so please, if anyone has young (non ferocious) animals that are suitable for a petting arena, and which you wouldn't mind loaning out for the day, please let the P&C know via the school. Rabbits, kids, lambs, guinea pigs, kittens etc would all be very happily received.

***Next meeting will be held Monday  
13 October at 6.30 pm.  
All are welcome.***

Web traffic is stable and over the last few months around 1000 unique visitors every month log onto the website.

Some of the searches people are using on a typical day to visit [www.windellama.com.au](http://www.windellama.com.au)



windellama	36	13.9 %
windellama news	15	5.8 %
windellama field day	6	2.3 %
<a href="http://www.windellama.com.au">www.windellama.com.au</a>	5	1.9 %
windellamarfs	3	1.1 %
modem aerial	2	0.7 %
rod holders 4x4 laws	2	0.7 %
sheep damarra	2	0.7 %
<a href="http://www.windellamarfs.com.au">www.windellamarfs.com.au</a>	2	0.7 %



## The Lieder Theatre Company

Presents



# Cinderella

By Stuart Paterson    Directed by Chrisjohn Hancock

***Wednesday 22<sup>nd</sup> October – Saturday 8<sup>th</sup> November  
Every Wednesday Friday and Saturday at 7.30pm  
2pm matinees on Saturday 1<sup>st</sup> and 8<sup>th</sup> November***

**Full price \$18 members & groups    \$13 children and concessions \$10**

Advance bookings on line at [www.liedertheatre.com](http://www.liedertheatre.com)

or by phoning the Lieder on 48215066

or in person at Michael Connolly Chemist, 312 Auburn Street, Goulburn

Commercial • Industrial • Domestic • Wiring  
INSTALLATIONS

# ALLARD

ELECTRICAL CONTRACTING SERVICES

Telephone 0418 234 289 or 4844 7088

Lic. No. 198855C

## Weekenders' Power

A complete system for under \$4,500.00  
12V or 24V for under \$5,500.00

Includes

1 Wind generator, 1 Inverter, 1 Solar Panel  
Plus 6 or 12 Batteries - all installed

**Phone 4844 5456**

## LOCAL ELECTRICAL CONTRACTOR

Lic. No. 174303C

**24 Hour prompt service  
Free Quotes**

# RON WENBAN

**Mob: 0428 445259**

**Ph: 4844 5259**

**Fax: 4844 5617**

**\*Rural \*Domestic  
\*Industrial \*Commercial  
\*Test & Tag tools  
& appliances**

## Sun Power

Design and Installation of  
Renewable Energy Systems

*[www.sun-power.com.au](http://www.sun-power.com.au)*

- Solar
- Wind
- Water Pumping
- Solar Tracking Systems
- Grid Connect or Stand Alone



Also supplying: Batteries, Inverters,  
Regulators and Battery Chargers.  
Phone 4849 4225

-----BCSE Accredited-----  
We prepare and submit all rebate  
applications.

## Australian Deer Association



### A.C.T. & Southern Regions Branch

The laws regarding deer have changed in NSW!

Our Branch is seeking to contact local landholders with the view to  
establishing **property-based game management plans**.

Deer on your property is now a legal game resource. Contact us to find  
out the benefits and potential income that you can derive from such plans.

Our members are licensed, trained, responsible hunters and covered by a  
\$10,000,000 public liability insurance.

Write to us to PO Box 299, Deakin West, A.C.T. 2600  
or ring 0411140-337