

THE WINDELLAMA NEWS



School House 1880

Windellama Progress Association Hall Inc.
Vol. 17 no. 4 - May, 2013

Editorial & Layout: Denise Johnson & Gayle Stanton
Sec/Treas: Denise Johnson

www.windellama.com.au

Published Monthly

Hard Copy Distribution 400 - Website : 6,000 average/month
Windellama, Oallen, Nerriga, Bungonia, Mayfield, Qualigo, Lake Bathurst, Bungendore & Tarago



Oallen Ford Road - roadworks update
Another 2kms nearly completed



WINDELLAMA PROGRESS ASSOCIATION ANNUAL GENERAL MEETING

In accordance with Clause 25 of the Constitution of the Windellama Progress Association, notice is hereby given that the Annual General Meeting will be held on **Saturday 18th May at 2 p.m.**

All positions on the executive and committee will be declared vacant and an election held. Nomination forms for positions on the executive and committee of the Association are available from Windellama Hall, or by contacting the Secretary, Frances Knights, on 4844 5157.

All members of the community
are welcome to attend.

*** BURNING OFF? - PERMITS NOW REQUIRED ***
Windellama Hall is your Neighbourhood Safer Place

Annual Subscriptions - please send your details and **\$20** (cheques payable to 'Windellama News') to cover the annual cost of postage.

All cheques please post to:

The Secretary, PO Box 705, Goulburn. 2580

* Unpaid subscriptions will be cancelled after one month

If you have any short articles, anecdotes, or something else interesting about yourself, your family, or the community; please write it down and drop it in our letterbox at the Hall. We will edit it and publish it in the Windellama News.

A LOCKED POSTAL BOX IS AT THE FRONT OF THE HALL, 3444 OALLEN FORD RD, IN THE STONE WALL FOR THE COLLECTION OF ITEMS FOR PUBLICATION

Items left in the box after the deadline will not be collected or included in the News

Articles, adverts, etc may also be sent by email to:

newswindellama@gmail.com

Adverts sent by email will not be inserted unless payment is received by the deadline.

Our Policy on Receipts

The Windellama News makes out a receipt for all advertising payments made to the paper. We don't post out receipts to save cost and we assume that the appearance of the advertisement in the paper could normally be taken as proof of payment.

If you require a posted receipt please include a stamped self-addressed envelope with your payment.

It would be greatly appreciated if anyone sending money to the Windellama News would include their name and address and a note saying what it was for and put it in a sealed envelope. This would avoid a lot of confusion and uncertainty .

Notice to advertisers, article submitters & readers

The Windellama News is published and authorised by the Windellama Progress Association Inc. Whilst every care has been taken in the production of the News & publishing to the web page on the community website, the editor takes no responsibility for any inaccuracies, errors or omissions. All such contributors by forwarding advertising, notices, & articles, agree to indemnify the publisher & warrant that the material is accurate & neither deceptive nor misleading, in breach of copyright, defamatory or in breach of any other laws & regulations.

The responsibility for advertisements complying with the Trade Practices Act lies with the person, company or agency submitting such for publication. Original material appearing in this newsletter is copyright. It may be reproduced in part or in whole for the benefit of the community, provided that the source of the material is fully acknowledged. If you have any queries about using material from the Windellama News, please contact the editor.

Coming Events...

June

- 8 Windellama School Auction & Fireworks
Nerriga Cake Stall
- 10 Queens Birthday Public Holiday
- 15 Bushfire Fighting Course
- 22 Brigade AGM
- 28 School Term 2 ends

July

Inside this Issue.....

SES & CFR / School P&C	5
Landacare	7
Garden Groups	9
Car Accident	11
Depression Advice	13
Auction Day Piccies	15
Progress Assoc.	16
Auction Day piccies	17
Classifieds	19/21
Fire Brigade	23
Alpacas	25
Historical	27/29
Gardening	31
Art / Craft	33/35
Church Info	37
Community Information	38-40

DEADLINE FOR ALL ISSUES IS THE 20TH OF THE PRECEDING MONTH

YOUR WINDELLAMA NEWS IS PRINTED BY BUSINESS REQUISITES, GOULBURN

Community Notice Board

Windellama News Update

Delivery Person

We need a volunteer to deliver along Windellama Road from the Hall to Lumley Road. Our delivery person for this section unfortunately cannot continue. If you can spare a half hour each month then this is for you; just contact Denise or Gayle.

THANK YOU

To **Pat Freebairn** for supplying her rainfall stats since we began reporting such. Also for being one of our delivery people and in the past one of our production team.

Pat was also one of our first responders in your SES/CFR team.

A very heartfelt vote of appreciation from all your friends from the Windellama News team and I am sure from all in the Windellama community. We wish you and Brian the very best with your move to the 'burbs and the next phase of your life journey.

Denise Johnson, editor.

June Long Weekend

Windellama Public School will be holding their annual auction arvo & fireworks night on Saturday 8th June.

Nerriga Progress will be holding a cake stall at Nerriga Hall on Saturday June 8th from 9am until 2pm or sold out. If anyone would like to have a small stall site with craft or old wares, please call Helen Rolland on 4845 9115.

Thank You

To members of **Windellama Landcare** who came and worked very hard on my property, *Serengeti*, at Nadgigomar Creek last month.

Mick Rivas

Nerriga Progress & Sporting Association is having a meeting on Saturday May 4 at Nerriga Hall starting at 2pm. Everyone is most welcome.

* CONGRATULATIONS *

To **Donna Edworthy** on her permanent position as Principal of Windellama Public School.

To **Vicki Cardiff-Kinder** for being awarded the Best in Handicraft competition at the recent Goulburn Show CWA competition.

To **Irene Turner, Warren Yates** for their prizes awarded at the Recent Goulburn Show.

To **Shelly Andrews** on *Cavalier* and **Kate Skelly** on *Cruise* who won the team Sorting event at Braidwood recently in the time of 55.72 seconds. They won prize money, a horse rug and feed. Both girls were very pleased.

To **Tanya & Darren Roberts** on the birth of their baby girl Sophie Ellen, a sister for Toby and Sam and a granddaughter for Lynton Roberts.

To **Pam Williams** when presented with a *Goulburn Gold Birthday Coin* by the mayor, Geoff Kettle, on the 10th April. Her birthday being the same day as Goulburn - March 14th.

An RFS Auction thank you!

A big thank you to everyone who helped with food preparation, cooking and serving on the Friday and Saturday of the RFS auction. We couldn't have done it without you and your willingness to assist helped to ensure the day was a great success.

WEED MANAGEMENT WORKSHOP

Goulburn Mulwaree Council is offering a one-day Integrated Weed Management Planning Workshop at **Windellama Hall on Friday 24 May, starting at 9.45 and finishing at 4 pm.** Morning tea and lunch will be provided.

RSVP by 20 May or for more information contact Cathy Crawford on (02) 4823 4410.

• Rural & Residential • Houses & Land • Acreage • Appraisals & advice • Rentals

4 Wallace Street
Tarago NSW 2580

Phone: (02) 4849 4297

Fax: (02) 4849 4382



SALES — Judy Alcock
judy@taragorealestate.com.au
Mob: 0439 603 234

RENTALS — Debbie Carey
debbie@taragorealestate.com.au

Friendly, local professionals
Honesty and professionalism guaranteed
Affiliated with all major real estate listing websites
Available 7 days by appointment



www.taragorealestate.com.au

GARAGES • FARM BUILDINGS • BARNES • EQUINE • INDUSTRIAL • STEEL KIT HOMES



CATALOGUES AVAILABLE FROM TARAGO REAL ESTATE OR TARAGO SERVICE CENTRE



Need more living space?

We can customise most of the rural and industrial buildings to suit your needs.



Consider Wide Span Sheds

The Wide Span Sheds range includes barns, farm buildings, stables, carports, garden sheds, homes, weekenders and studios.



Need a Builder?

We can put you in touch with local experienced, professional shed and house builders.



Call Tarago Real Estate (02) 4849 4297
...your local authorised agent for all your building requirements.



There was a couple of rather serious accidents, which had to be dealt with during the last few weeks, these were attended to very promptly by our C.F.R. members. The professionalism of all members was quite evident.

On another note, we had to farewell two of our longstanding members at our last meeting 08/04/13, they will be sadly missed. We all wish them the very best in their new more relaxed lifestyle, not having to constantly wear that "beeping pager".

Now this will mean some more pressure will be put on those left. Fortunately, we have some new members coming on board. They are currently going through the necessary steps to become members of the S.E.S. which will then enable them to do the C.F.R. (Ambulance) course when the Ambulance Service has the time slot for it to be done.

Winter is now approaching rapidly so please be aware of the risk of Hypothermia. This was brought home to me when I stepped off the plane in Canberra after having flown home from Cairns that morning (19th); thirty degrees for a week and then seven at the Airport in Canberra. The house was extremely cold so the fire was soon alight. An extremely kind lady looked after my little dog whilst I was away and I do thank her for that.

I am assured that the Windellama Unit will be going ahead very soon. I shall be contacting Jason on Monday 22nd April to be brought up to date, as it is about ten days since I last spoke with him. This building will be fitted out as an operational unit of the SES as required to fit the standards of all units, in a smaller style. It would however be used in the same way as any operational unit if a major incident should occur in this area, we hope that never happens.

I am sure that people are not aware of the wealth of knowledge that our senior people from Goulburn have in the management of various situations which may eventuate, some are paid but many are just volunteers, working in full time jobs, or retired.

There are always courses for people who wish to learn, so join up folks, men or women, young or old. We have had unemployed people gain work through their activities with the SES.

You most probably noticed the Ford Ranger Twin Cab that has been supplied to us for the C.F.R. work mainly I hope the Kangaroos are not attracted to it as happened to the R.A.V 4 which has been taken to "greener pastures".

Regards Kevin Muffet
Team Leader Windellama S.E.S. & C.F.R.

Windellama School P & C

Fireworks and Auction booked for Saturday 8th June

A quick reminder that the annual Windellama Public School P&C fundraiser will be held on the Saturday afternoon of the long weekend.

For those who haven't been before, it involves an afternoon auction of a huge variety of new goods donated by local businesses – from hardware, garden products and animal feed to restaurant vouchers, homewares, books, manchester and clothing. The auction is followed by a spectacular fireworks display in the evening.

There's also a chocolate wheel with lots of surprises, showbags and fun for the children, plus a bonfire and plenty of hot food to keep everyone warm on an early winter's eve.

The auction starts at approximately 2pm; fireworks begin some time after 6pm, when the sky is fully dark.

Better Heating

A lot of places are selling heating products, like wood & gas heaters.
The difference is WE can show you how to use them!

We have the largest range of wood and gas
heaters in Goulburn.

LARGE RANGE **GREAT PRICES**
FRIENDLY STAFF **GREAT SERVICE**



4821 1252 or 4821 4885

388 Auburn Street, Goulburn www.barbequesgalore.com.au

**BARBEQUES
GALORE**

BBQ Better.



Windellama Landcare

WORK PARTY AT CATHY PROCTOR'S

Unfortunately this work party had to be cancelled due to the uncertain weather on Saturday.

WEED MANAGEMENT WORKSHOP

Goulburn Mulwaree Council is offering a one-day Integrated Weed Management Planning Workshop at Windellama Hall on Friday 24 May, starting at 9.45 and finishing at 4 pm. Morning tea and lunch will be provided.

RSVP by 20 May or for more information contact Cathy Crawford on (02) 4823 4410.

NEW MEMBERS WANTED

Have you thought of joining a Landcare group? It is a great social activity – meeting local people while learning about our unique local area. Annual membership of Windellama Landcare is \$5.00 per family. Children are very welcome. If you are new to the area and are interested in joining Landcare why not join us at one of our working bees to see what we do? Phone Warren, the President on 4844 5350 or Sandra, the Secretary, on 4844 5047

WILD WINDELLAMA

Carina Clarke's articles, accompanied by her beautiful sketches, about birds, animals, plants, insects, fish and reptiles of the local area were published in the Windellama news over a number of years, are now collected in a two volume set called *Wild Windellama*.

Copies are available from the Secretary, Windellama Landcare (02 4844 5047) at \$10.00 per set.

NEXT WORKING BEE

The next Windellama Landcare working bee will most likely involve tree planting so have your garden gloves and digging sticks ready. Details will be in the next newsletter.



Integrated Weed Management Planning Workshop

Do you want to take a fresh look at your property?

Do you wonder why weeds are growing on your property?

Do you want to aim for a weed resilient property?

Do you need help to learn how to develop a weed management plan?

If you answered YES to any of the above questions then this workshop is for you!

Goulburn Mulwaree Council is offering this one day workshop to the community to effectively manage noxious weeds, for the long term, on their property.

In the morning you will learn:

- what key questions to ask when assessing your property;
- broad mapping, monitoring and land capability assessment techniques;
- the importance of setting plan objectives; and
- how to put all this down into a workable integrated weed management plan.

The afternoon will be spent applying what you have learned by starting to develop your own integrated weed management plan for your property.

Where: Windellama Hall

Corner Windellama Road and Callen Ford Road

When: Friday 24 May 2013

Time: 9.45 am to 4.00 pm

Cost: Free

Morning tea and lunch (sandwiches) provided.

RSVP by Monday 20 May or for more information contact Cathy Crawford on 4823 4410.

Supported by:



Be a good neighbour...
CONTROL
NOXIOUS WEEDS



Catchment Management
Authority
Hawkesbury-Nepean

Goulburn Off Road Carts

www.offroadcarts.com.au

OPEN 6 DAYS



5kva petrol generator \$1400

Portable petrol generators from \$770

LARGE 1500 RPM DIESEL GENERATOR 8kva \$5900



All sizes 8kva \$5900 to 200kva
ideal for solar back up

Carts & buggies from \$3300 ,great farm vehicle \$150cc \$3300 250cc \$5600



250ss cart \$5600



quad bikes 250cc \$5000

quad bikes
4wd 500cc
\$7700



150cc elec start farm bike \$2600

4wd tipper heavy duty farm work \$10,700



Fully equipped fire trailer \$3960
just add water



Tows 800kg, carry 400kg

ENQUIRIES & SALES - PHIL BONSER

565 Mt. Baw Baw Rd, Goulburn NSW 2580

Mobile: 0419 694 148 Ph: (02) 4821 0397

Nerriga Gardeners

We enjoyed a lovely walk around Helen Rolland's little bit of paradise, although without Denise to remind me, I left the camera in the car.

We hope those of us who were not so well on the 17th are fully recovered by now.

On Wednesday May 15th at 10am we will be going to Kay & Chris Hamer's place at Corang Cottage, 7184 Braidwood Road Nerriga.

If you wish to car pool, 9.30am at either 1181 Oallen Road or at Winrock, Nerriga township.

Please bring a plate to share for lunch. For more info Kay Hamer 4845 9021 or Di Roberts 48445344. All are welcome.

Di Roberts

Windellama Garden Club Inc.

Our next meeting will be at Beryl Kremers on the 1st May at 79 Bradley Street, Goulburn; then on to the chinese restaurant for lunch.

On May 8th some of our members will join Robertson Garden Club for an arbour day at Berrima.

Our Cancer Day will be held on the 3rd August with all proceeds going to local charity for cancer - CANASSIST.

Special birthday wishes to Carol Kwanten and a cheerio to her mum, Dot, who is not real well at present. Also on the list for cheerios are Dinah Gegg and Pauline Dixon who are having some health problems.

Pam Williams

Crafts @ Windellama Hall

The Craft Tuesdays are in the afternoons, from the second Tuesday at 1 - 4 pm.

All crafts are practiced: cards, folk art, knitting, crocheting and needlework. All Welcome.

For more information please contact Irene on 4844 5214.

Willowglen Gardeners

<http://www.whispersfromwillowglen.blogspot.com>



On Tuesday 5th April the Willowglen Gardeners met at David and Pauline Rouse's place at Mt. Fairy Road.

The gardens are spectacular and everyone was impressed with the roses and different gardens around the place. There were many comments on the lawn; so nice and soft and springy.

David has a variety of old machinery and implements around the place. They also have some lovely lights down at the dam/lake and seats placed at strategic spots to view the lovely sights.

The weather was beautiful and everyone had a great day out. Thanks very much Pauline and David.

Our next get together is at Leon Robar's at 114 Yarralaw Road starting at 10am. Bring a plate of morning tea and plants/seeds to share.

If you are new to the area and want to know tricks to gardening in the Windellama area, just come along and join us for the morning.





The Lieder Theatre Company

Presents a new play

Comin' Home Soon

Written by Alana Valentine

Directed by Chrisjohn Hancock

Every Wednesday, Friday and Saturday from
Friday 26th April – Saturday 11th May
At 8pm

Tickets at Town and Country Books of Goulburn in Centro Mall
or online at www.liedertheatre.com

Enquiries 4821 5066



Lowline Cattle

Quite, easy to handle stock - smaller size means easier handling, less stress on fencing & less soil compaction!



LOWLINE

Great for first time cattle owners & for introducing children to cattle

Heard of Wiltipoll Sheep?

Wiltipoll sheep don't need shearing they shed their wool, are very hardy, don't crawl or wander, & produce fantastic fat lambs!



WILTIPOLL
THE LESS WORK PRIME LAMB BREED

Windellama Downs

Producing quality, Australian breed cattle & sheep suitable for any size rural holding

Stock for sale

Commercial or registered stud stock
Mob: 0416 047 488 Ph: 4844 5715
Email: windellamadowns@iinet.net.au

Need a Plumber Call. . .



GRAHAM MOON

Lic. No. 194029C

Plumber - Drainer - Gas Fitter

Roof Plumber - L.P. Gas

DOMESTIC & COMMERCIAL - 7 DAYS

Phone **0428 223 677**

**This space
available for
\$6.50**



The very nasty bend on Oallen Ford Road, Oallen has captured many victims now claims another. On Good Friday someone took this bend too quickly, wiped out some signs, and plunged down the very steep embankment, over a wash away and down into the creek bed (lucky not to have hit the trees).

The occupants quickly removed items from inside the car, their number plates, and went on their way for their Easter weekend break.

Normally this section of the road, without the present road works, has a speed limit of 100kph! From Oallen Ford to Sandy Point Road the speed limit definitely needs to be lowered and council needs to re-visit this.

With the Kings Highway at Clyde Mountain being closed for 15 days the Oallen Ford Road is definitely going to see an increase in traffic and probably more Motor Vehicle Accidents.

VIRTUAL REALITY COUNSELLING (THERAPY)

- Depression Recovery Program
- Weight Management Program
- Stop Smoking Program
- Addiction Management Program
- Stress Management Program
- Children's Behaviour Management
- Conflict Resolution/Mediation
- Family Dispute Resolution
- Employment Assistance Program

(02) 8090 1749

www.virtualrealitycounselling.com



Countrywide Shower Screens



Shower Screens

- Frameless • Semi-framed • Framed

Mirrors

- Bevelled • Polished

Mick Greenwood

0448 494 220

Fax: (02) 4849 4220

E: countrywideshowerscreens@bigpond.com

Free Measure and Quote

BUSINESS REQUISITES *Sales & Service*

- Photo Copiers
- Fax Machine
- Cash Registers
- Computers
- Stationery
- Consumables

Ph: **4821 5109**

E: bus_req@ozemail.com.au

10 Russell Lane, Goulburn

Printer of your Windellama News

A1

SEPTIC TANK & GREASE TRAP CLEANING SERVICES



0408 483 943

Bob Baird Goulburn

PH: 4822 3290

7 DAYS—SERVICING ALL AREAS

Childhood Depression

What Is Depression?

Depression is a serious health problem that affects people of all ages, including children and adolescents. It is the persistent experience of a sad or irritable mood and the loss of interest or pleasure in nearly all activities. These feelings are accompanied by a range of additional symptoms affecting appetite and sleep, activity level and concentration, and feelings of self-worth.

Clinical depression is more than just feeling blue or having a bad day. And it's different from the feelings of grief or sorrow that might follow a major loss, such as a death in the family. It's not a personal weakness or a character flaw. Children and teens with clinical depression cannot simply snap out of it.

Depression is a form of mental illness that affects the whole body—it impacts the way one feels, thinks and acts. If left untreated, depression can lead to school failure, alcohol or other drug use, and even suicide.

Know The Signs.

- Persistent sadness and hopelessness.
- Withdrawal from friends and activities once enjoyed.
- Increased irritability or agitation.
- Missed school or poor school performance.
- Changes in eating and sleeping habits (e.g. significant weight loss or insomnia).
- Indecision, lack of concentration or forgetfulness.
- Feelings of worthlessness or excessive guilt.
- Frequent physical complaints such as headaches and stomach aches.
- Lack of enthusiasm or motivation.
- Low energy and chronic fatigue.
- Drug and/or alcohol abuse.
- Recurring thoughts of death or suicide.

Know The Facts.

- As many as one in every 33 children and approximately one in eight adolescents may have depression. (Center for Mental Health Services, 1996).
- Treatment of major depression is as effective for children as it is for adults. (Dr. Graham Emslie, American Medical Association, Archives of General Psychiatry, 15/11/97).

What are some of the risk factors for depression?

- Children under stress, who have experienced loss, or who have attention, learning, or conduct disorders are at a higher risk for depression (American Academy of Child & Adolescent Psychiatry).
- Adolescent girls are more likely than adolescent boys to develop depression (National Institute of Mental Health).

- Youth, particularly younger children, who develop depression are likely to have a family history of the disorder (National Institute of Mental Health).
- Four out of every five runaway youth suffer from depression (U.S. Select Committee on Children, Youth & Families).

What are some of the consequences of depression?

- Once a young person has experienced an episode of depression, he or she is at risk for developing another episode of depression within the next 5 years (Center for Mental Health Services).
- Depression in childhood may predict more severe depressive illness in adulthood (National Institute of Mental Health).
- Depression in children and adolescents is associated with an increased risk for suicidal behaviors (National Institute of Mental Health).

What Can Parents/Adults Do?

If parents or other adults in a young person's life suspect a problem with depression, they should:

- Know the warning signs of depression and note how long problems have been going on, how often they occur, and how severe they seem.
- See a mental health professional or the child's doctor for evaluation and diagnosis.
- Get accurate information from libraries, hotlines and other sources.
- Ask questions about treatments and services.
- Talk to other families or find a family network organization.

It is important for people who have questions about, or are not satisfied with, the mental health care they receive to discuss their concerns with the provider, ask for more information and seek help from other sources.

Help is Available

Depression is treatable. Early diagnosis and treatment are essential for children with depression. Children who exhibit symptoms of depression should be referred to and evaluated by a mental health professional who specializes in treating children and adolescents. The diagnostic evaluation may include psychological testing, laboratory tests and consultation with other specialists. A comprehensive treatment plan may include psychotherapy, ongoing evaluation and monitoring, and in some cases, psychiatric medication. Optimally, this plan is developed with the family, and whenever possible, the child or adolescent is involved in treatment decisions.

Source: Teenage Depression

Prepared by: www.virtualrealitycounselling.com

Tarago & District Progress Association Inc

presents

Tarago

RockQuiz

Tarago Hall

Saturday May 25th @ 7:00pm

Featuring our very own Rockquiz Orchestra

Smokestack Lightning

If you missed the last one you don't want to miss this one!

Round 3 of our Music trivia night!

So dress up in your favorite era glad rags & Join fellow Music Braniacs for another great evening with loads of fun and lots of prizes.

byo alcohol, dancing shoes and a plate to share. Tea, Coffee and soft drinks available

Admission \$10 - enquiries 02 4849 4221- all funds raised go to the upkeep of and improvement to the Hall

SAMCOD EQUINE SERVICES



- BREAKING IN
- TRAINING
- FARRIER SERVICE

Carl Estall

Phone: 4844 4225

Mobile: 0411 517 758

Email: caranel@bigpond.com

Goulburn & Surrounding Areas

Lynda Howell - EFA/NCAS Instructor

*Teaching Beginners to Advanced

* I have been teaching for many years with vast experience with many types of rider and horse combinations

* Full sized sand arena available

* Servicing Goulburn & surrounding areas

* Will travel for more than 3 riders

* Must have own horse



***Agistment Available -
full board only
Many years in the industry
- professional care given*

Phone: 4849 4565

Mob: 0427 074 579

Address:

97 Burrabinga Road Tarago

Bargains at the RFS Auction





WINDELLAMA HALL COUNTRY MARKETS

**SUNDAY 19th May
9AM TO 1PM**

**LOCAL PRODUCTS
FRIENDLY ATMOSPHERE
FOOD & REFRESHMENTS
PLENTY OF PARKING
MUSEUM OPEN**



**Enquiries to Bob Shaw
on 4844 5001
Market Day kitchen
helpers needed to serve
food and drinks once or
twice a year.**

REPORT FROM THE PROGRESS ASSOCIATION

At our recent general meeting, the success of the Talent Quest and the annual Bush Fire Brigade auction was discussed and various ideas to improve facilities at the hall for functions such as these were canvassed.

As you will all be aware the hall grounds have been designated the neighbourhood safer area and as such we have been offered a concrete water tank which will be a dedicated fire fighting facility. This should be installed within the next month.

We had a small farewell for our committee member, Pat Freebairn, who with husband Brian, will be moving into Goulburn at the end of the month. We wish them health and happiness.

The Annual General Meeting of the Windellama Progress Association will be held at Windellama Hall on Saturday 18th May commencing at 2 p.m. All positions on the executive and committee of the Association will be declared vacant and a vote held to elect representatives for the next twelve months.

We would be very pleased to welcome new members of the community to the meeting. We would urge community minded members of the district to consider joining the Association and perhaps standing for a position.

The duties are not onerous; we meet on the third Monday of each month and would welcome anyone who thinks they have anything to contribute.

This will ensure that the facilities, which have been built up over many years, and are the envy of other small communities, are maintained for the benefit of all in the years to come.

The next monthly general meeting will follow the AGM on Saturday 18th May.

Frances Knights, Secretary



Auction Day people





*Sales, service & parts for
Kubota & Yanmar Tractors*

* Implements * Loaders
* Slasher * Post Hole Diggers, etc


Diesel Traders

38 Saggart field Rd, Minto

Ph 02 9820 5566

Fax 02 9820 5878

www.dieseltraders.com.au



TRAIN YOUR DOG

Scott Borland
Dog Trainer

Obedience Training
Advice on Dog Behaviour
Dog Minding / Pet Products

0404 001 439
info@trainyourdog.com.au
www.trainyourdog.com.au



BRIAN'S AUTOSCREENS & GLASS

Mirrors · Showers
Mirror Wardrobes
Windscreens · Glass
Security Screens etc.

440 Auburn St Goulburn

Ph 4821 2633

Fax 4821 9133

Andrew Pearson
4844 5838 or
0400 285 765
REASONABLE RATES

FOR HIRE

With Operator

Backhoe - Slasher - Loader

Grader Blade w/rippers

SCRAP METAL REMOVAL

MOBILE MECHANICAL REPAIRS

Diesel / Petrol

Auto Electrical

For your truck, tractor, car

D & J RIGOLI



**HANDYMAN SERVICES
&
PROPERTY MAINTENANCE**
ABN 43002820238

* INTERIOR LINING
* SMALL RENOVATIONS
* SHED TO HOME CONVERSIONS
* PERGOLAS * VERANDAHS
* PAINTING * TILING * PAVING

And much more...
no job too big or small !

Will beat any reasonable quote

Ph: **4844 5393**

Mob: **0419 492 799**

Fax: **4844 5163**

E: dickrigoli@gmail.com

Classified Advertisements

All personal classifieds are FREE & also included in the Tarago Times

We run your advert until you let us know
when you have sold it or gained it

GENERAL FOR SALE

Camp Bed, folding, single with mattress. Good condition. Ph 4844 5001

Pine TV & display unit with 23" analogue TV & digital box. \$250 for the lot. Ph 4849 4371

Parrot Cage on stand, good cond. \$150 ONO. Ph 0429 006 745

410 Shotgun, near new with some ammunition. \$340 ONO. Ph 4845 9147, after 6PM, PFT.

Lounge and matching arm chair, 2 seater leather/wood, good condition. \$40.00 Ph 4844 5180

Bunk bed - top single, bottom double with mattresses. \$300. Ph 4844 5838

Cocky's Cage 190cm high, 150cm wide, 65cm depth \$100.00 Ph 4844 5287

Westinghouse L.P.G upright stove, suit weekender. grill needs work. \$30. Ph Irene 4844 5214

Outdoor camp shower, canvas bucket, 20 Ltr capacity \$10 Phone Bob 4844 5001.

Firewood - Split, seasoned. Ute load - approx. one tonne. Local delivery - \$150 per load. Ring Greg - 4844 5157

Books, second hand; **DVD's** - 50 cents each. Ph 4844 5087

RURAL RELATED FOR SALE

Duncan Direct Drill, 20 tyne. Good order. \$3,500. Ph 4844 6250

Stockcrate 1.8 x1.8 x1.2 galvanised 40 x 40mm, Good for sheep or calves, sliding rear roller door VGC -\$500 o.n.o. Ph 0412 421 464

Gates - from 1 to 4 metres. Chain wire, mesh, hinge lock. 40 to choose from. Ph 4844 4251

WANTED

Farm Contractor with tractor (only) to deep rip tree lines. Needs to be able to pull a 3 shank Yeomans Plough. 60-100hp required. Location is 2 km from Lumley Rd turn off, on Mayfield Rd. Please call Nick Huggins 0417 010 956

Pekin ducks One or two female as company for my existing 2 year old female. Ph Pam 4844 5180

Knitting wool for volunteer knitters for charity. Any leftover wool, any ply, gratefully accepted. Ph Denise 4844 5087

Yeoman Plough 3 tyne 3PL. & **Ripper** 3PL Chisel single tyne & **Rotary Aerator**. Ph 4844 7129 or 0418 223 617

House sitter - Is there anyone out there who house sits & dog sits? For a local resident with a 7 year old German Shepherd. Ph Shirley 4844 5287

Industrial • Commercial • Rural • Domestic
Ph 4844 7088 **INSTALLATIONS** 0418 234 289

ALLARD

ELECTRICAL CONTRACTING SERVICES
SOLAR UTILITIES & ENERGY SERVICES
GAS-OIL COMBUSTION SERVICES
stevenallard@bigpond.com

ELECTRICAL LICENCES:

NSW Lic.No 198855C
NSW Lic.No 498875S
ACT Lic.No 2009576
QLD Lic.No C13290

ACCREDITATIONS

AUS C.E.C. Design & Install Grid Connect
& Stand Alone Solar Systems #A3632173
ACT Type (B) Gas Appliance #200732
NSW O.H.&S. General Induction #03655
NSW Confined Space Trained #1140909

RON WENBAN

LOCAL ELECTRICIAN

NSW LIC No: 174303C ACT LIC No: 2008568

ACCREDITED SOLAR INSTALLER

CEC Accreditation No: A0597678

Mobile: 0428 445 259

ronwenban@skymesh.com.au



Southern Districts Piano Service

Pianos • Pianolas • Tuning • Repairs
Re-polishing • Removals

Graham Price

02 4844 5329



CJ Solar

"Quality Systems that last"



Home, Business or Community
Organisations

**Custom Designed To
Meet Your Energy Needs**

- ◆ Stand Alone Systems
- ◆ OnGrid With Battery Backup
- ◆ Grid Connect
- ◆ Clean Energy Council Accredited

Ph: 4849 4225

www.cjsolar.com.au

PREVIOUSLY TRADING AS SUN POWER

LICENSED ELECTRICAL CONTRACTORS (241654C)

Classified Advertisements

All personal classifieds are FREE & also included in the Tarago Times

**We run your advert until you let us know
when you have sold it or gained it**

ANIMALS FOR SALE

Belted Galloway Bull for sale, Registered with certificate, 3 years old, black & white, docile, Windellama area \$1500. Call John 0411 349 555.

Puppy, bully stag, male, white, vac., micro-chipped, 10 weeks. \$400 ONO Ph 0429 006 745

Piglets - different ages so different prices. Ph Bob McDonald 0429 494 331

Black and white bull 1 year old, \$500, Black and white steer 1 year old, \$400, Please phone after 7pm weekdays, Terri 0413 241 356, Paul 0403 065 875

Roosters - 2 x light sussex, 2 x mixed, 1 welsummer. All 12 months old. \$10 each. Ph 4844 5040 any day at 5pm.

Dorper x Damara flock, approx 30 ewes & lambs. Ph 4844 5455

Young **ducklings** - Buff Orpington/Peking cross - \$12 each

Quarrians - greys, and Pearls - \$15 each. Ph 4845 9147 after 6PM.

Geese for sale. \$25 each. Ph 4844 5906

FOR LEASE

Belted Galloway Bulls for lease, Black & white and Red & white, 4 years old. Both registered with certificates. Call John on 0411 349 555.

CARS, BIKES, TRAILERS, etc. FOR SALE


Toyota truck, 1988, good working order, with 13ft steel tray & stock crate. Long rego. Ph 4829 5123

Transalloy Ute Tray 1.8 x 1.8, suit most 4x4's, complete with dropsides and LED lights VGC -\$1100 o.n.o. Ph 0412 421 464

Polished Alloy Rear Ute Sports Bar \$100 Ph 0412 421 464

Aluminium Savage 4.3m Boat (1995) with 30hp Yamaha outboard on brooker trailer. Front steering & canopy, electric start, radio, compass, plus all extras. Always garaged & flushed, runs well. \$5,900 ONO Call Scott 0418 563 888

It's really **TRIVIAL** but....
We'd like you & your friends to join us.
LITERATURE, LUST & LOVE
is a **QUIZ EVENING** of facts, fiction & fun



Come dressed as your favourite character or author.

There will be lots of prizes including best dressed, and the best themed table!

Wednesday 22nd May 2013
6:00pm for a 6:30pm start
Goulburn Mulwaree Council Chambers,
Bourke Street, Goulburn

Cost - \$10 per person with all proceeds to the charity **Suluhisho Trust**. *Suluhisho is a charity that was started by a local Goulburn woman Jacinta Ojwang and her Kenyan husband Antipas. They have a number of projects that are being established including building a children's village in Kenya, a school and a very special project called Lara's Library, named in honour of a child of a local Goulburn couple that has passed away. www.suluhisho.com*

Maximum of 8 people per table,
BYO nibbles and drinks (tea & coffee supplied)
RSVP by Monday 13th May

Bookings at Goulburn Mulwaree Library on 4823 4435,
email library@goulburn.nsw.gov.au

F I F E ' S S T O C K F E E D S



Round Bales
Pasture Hay
Square 8x3x2
Lucerne Hay
Rye & Clover



Also suppliers of Bird Seed, Dog Food, Cat Food,
Wheaten Chaff, Oaten Chaff, Stud Mix

51-52 Knox St Goulburn

(0 2) 4 8 2 2 3 1 1 1

**New to the Area is a fully
qualified & licensed Carpenter**

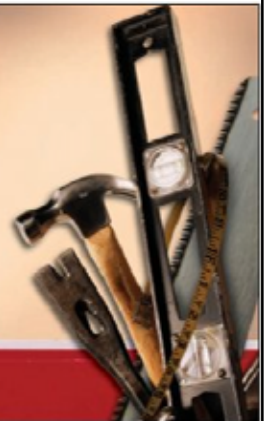
**Specialising & covering all
aspects of Carpentry work**

**Decks, pergolas, small
renovations, any odd jobs,
handy man work,
property maintenance, gardening,
with many other services available.**

**WINDELLAMA
CARPENTRY &
HANDYMAN SERVICES**

James Walsh
64 Charles Road,
Windellama 2580
0447520173
48445940

ABN: 90 656 821 885



NO JOB TOO SMALL WITH FAMILY FRIENDLY PRICES.

Email: windellamacarpentry@yahoo.com.au

**For a no obligation quote or discussion,
and a prompt, reliable service, please give me a call.**

JAMES WALSH

4844 5940

0447 520 173



WINDELLAMA VOLUNTEER RURAL FIRE BRIGADE



Report all Fires 000
& Emergencies

RFS website www.rfs.nsw.gov.au

Captain - Rex Hockey 4844 5147

Brigade enquiries 4844 5359

or

Brigade website www.windellamarfs.com.au

Snr Deputy – Lynton Roberts 4844 5118

Yass - 6226 3100

UHF 21

BUSH FIRE DANGER PERIOD FINISHES ON 31ST MARCH 2013 SOUTHERN TABLELANDS ZONE

Burning-off now permitted with regulations

While the fire season has finished and permits are not required for burning off from the 1st April 2013, there are still regulations that must be followed. Fines can apply if regulations are not carried out.

- Yass MUST be notified 24 hours before you light the fire, during business hours 9am to 5pm and by 3.30pm on Friday afternoons, phone 6226 3100.
- Your immediate neighbours must also be notified.
- Notify the Brigade as a courtesy to save time, if smoke is spotted, phone 4844 5359.

It should be noted that for the purposes of a hazard reduction burn a 'PILE' should not be more than 2 m (about 7 ft) long or wide and not higher than 1.5 m (about 5 ft) high and limbs/logs should not be larger than 150mm (6 inches) in diameter. 'WINDROWS' are bigger than 'PILES' and must be requested as a Windrow burn and not a Pile burn.

For more information contact one of the Brigade phone numbers above.

Brigade Auction This was another very successful day due in no small part to the efforts of our Catering Officer, Alan Martin and his two valuable Assistants Jacquie Gurney and Heather Caulfield plus their many helpers, Congratulations'. The actual auction went till about 4.45pm due to the large number of lots on offer and a very big 'Thankyou' is in order for Jim Brewer and Graeme Welsh and also the Office personnel Ray & Gayle and our Secretary Ellen Sylvester and their many volunteers.



Training

If you wish to take part in the Windellama Brigade training or be contacted by email regarding the monthly training details visit the Brigades website and send an online contact form or email windellamarfstraining@gmail.com. For information on training dates, times and scenarios check the Brigade website or contact the Captain Rex Hockey 4844 5147.

If you would like to take part in an accredited Rural Fire Service Basic Firefighter course which is scheduled for 15th & 16th June 2013, register now by contacting Captain Rex Hockey 4844 5147.

www.windellamarfs.com.au

General Meeting 25th May 2013 - 6pm

Training 25th May 2013 – Remote Scenario off Shoalhaven River - 1pm

General Meeting & AGM 22nd June 2013 - 6pm

Training 22nd June 2013 – Nil due to BF Course. - 1pm

Please take care on our roads and see you at the next training and meeting. All welcome.

**You will like this! ... And it is a true story!
On Thursday, 24th January 2002 , Derek
Guille broadcast this story on his afternoon
program on ABC radio.**

In March 1999 a man living in Kandos (near Mudgee in NSW, Australia) received a bill for his as yet unused gas line stating that he owed \$0.00. He ignored it and threw it away. In April he received another bill and threw that one away too.

The following month the gas company sent him a very nasty note stating that they were going to cancel his gas line if he didn't send them \$0.00 by return mail. He called them, talked to them, and they said it was a computer error and they would take care of it.

The following month he decided that it was about time that he tried out the troublesome gas line figuring that if there was usage on the account it would put an end to this ridiculous predicament. However, when he went to use the gas, it had been cut off.

He called the gas company who apologised for the computer error once again and said that they would take care of it. The next day he got a bill for \$0.00 stating that payment was now overdue.

Assuming that having spoken to them the previous day the latest bill was yet another mistake, he ignored it, trusting that the company would be as good as their word and sort the problem out.

The next month he got a bill for \$0.00. This bill also stated that he Had 10 days to pay his account or the company would have to take steps to recover the debt.

Finally, giving in, he thought he would beat the gas company at their own game and mailed them a cheque for \$0.00. The computer duly processed his account and returned a statement to the effect that he now owed the gas company nothing at all.

A week later, the manager of the Mudgee branch of the Westpac Banking Corporation called our hapless friend and asked him what he was doing writing a cheque for \$0.00. After a lengthy explanation the bank manager replied that the \$0.00 cheque had caused their

cheque processing software to fail. The bank could therefore not process ANY cheques they had received from ANY of their customers that day because the cheque for \$0.00 had caused the computer to crash.

The following month the man received a letter from the gas company claiming that his cheque had bounced and that he now owed them \$0.00 and unless he sent a cheque by return mail they would take immediate steps to recover the debt.

At this point, the man decided to file a debt harassment claim against the gas company. It took him nearly two hours to convince the clerks at the local courthouse that he was not joking.

They subsequently helped him in the drafting of statements which were considered substantive evidence of the aggravation and difficulties he had been forced to endure during this debacle.

The matter was heard in the Magistrate's Court in Mudgee and the outcome was this: The gas company was ordered to:

[1] Immediately rectify their computerised accounts system or Show cause, within 10 days, why the matter should not be referred to a higher court for consideration under Company Law.

[2] Pay the bank dishonour fees incurred by the man.

[3] Pay the bank dishonour fees incurred by all the Westpac clients whose cheques had been bounced on the day our friend's had been processed.

[4] Pay the claimant's court costs; and

[5] Pay the claimant a total of \$1500 per month for the 5 month period March to July inclusive as compensation for the aggravation they had caused their client to suffer.

And all this over \$0.00!

This story can also be viewed on the ABC website.

Well Tololo was castrated by Jan , poor boy and there go my last hopes of having any Appaloosa Alpacas. But we cannot in all conscience continue breeding to have the danger of them being murdered for meat.

Last weekend on the 9th I was out and Tololo escaped through the creek fence to the girls. He was possibly in there any time from 12.00 to 2.30 pm. Soon after Vivien and I came back, Heroides shouted that Tololo was at the back. The girls were no longer taking any notice of him and he was in a dreadful state, exhausted and shaking in the back legs. I gave him food and Rescue Remedy and he eventually calmed down. He had been spat, so who knows if he did the deed or was just chased and had no success.

We will have to wait until next February to find out, and I shall keep a close eye to see if anyone's character changes. I would be delighted with another cria, but I think Heroides not so much.

Jan was going to castrate Monty too but did not have time to stop, too busy, so Heroides is going to take him to her surgery tomorrow. Mbale has hurt his hip and has been on Cod Liver oil, Arnica and Glucosamine pills and is being rubbed with extra strength Arnica. Jan examined him and said his hip had popped out and back again and needed building up, not an operation and it is not his crucheate. So she suggested anti inflammatory and krill tablets and massage, he already gets that.

AAA have closed their forum and I am persona non grata with AABA so I am not posting anymore. This is really all for fighting the Alpaca Meat Market, but I do not care, it is abominable and I shall go on fighting as and when I can. There are not many places now as "World of Alpacas" would not print an article which mentioned not eating Alpaca meat and I have written for them for about ten years.

We shall not breed but keep our 26 darlings as long as possible, or they will go to lifetime homes, and use their valuable asset their fleece, in lovely garments. Have felt very low but not letting it get me down, I try to remain positive. This is all caused by human greed for money.

Lovely autumn is with us, with calm quiet weather and coloured trees.

Namaste and Deep peace. Joy

Caring and compassionate Alpaca Guardian.



Above: Monty on the phone

Left: Alpaca in the sunroom

GOLDSMITH STREET SURGERY

Call 4821 7445

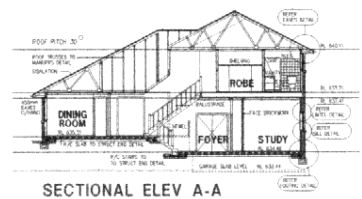
**Same day
appointments available**

We are open
MONDAY-FRIDAY
9am to 5pm
SATURDAY
10am to 2pm

ACOM DESIGN

PO Box 806,
Goulburn 2580

Yarralla,
Oallen Ford Rd
Bungonia 2580



SECTIONAL ELEV A-A

Robert C Everingham

Building Designer & Draftsman

New Homes, Alterations & Additions
Duplex, Villa, Townhouse Developments
Rural, Commercial, Industrial Buildings
Free Quotes - Competitive Rates - Prompt Service
Energy Efficient (SEDA), Eng Dwgs: Mech, Struct, HVAC

TEL 4844 4321

MOBILE 0417 682 022

FAX 4844 4323

EMAIL acomdesign@bigpond.com.au



MEMBER
STANDARDS AUSTRALIA



MEMBER
BUILDING
DESIGNERS
ASSOCIATION
OF NEW SOUTH WALES INCORP

Oallens Mobile Mechanic



Rob Hutchison

Ph: 02 4844 5727
Mob: 0401 078 483

- All mechanical repairs
- Breakdown service available
- Travel to you
- Motor re-builds
- New car services
- Stationary engine repairs
- Clutches, brakes
- Tractor repairs & re-builds

4844 5727

BOB RUDD FUNERALS



**73 Reynolds Street
Goulburn NSW 2580**

Phone 4822 4400

**Your Local Family Owned
Funeral Directors**



David Rudd & his sister Shane

WE WORK HARD TO GAIN YOUR CONFIDENCE & TRUST

Introducing our New Chapel with on sight parking
Pre-paid funerals available as well as pre-arranged funerals.

Just ring and we will come to you

Servicing Windellama, Goulburn, Mulwaree Shire, Marulan,
Gundaroo, Braidwood, Gunning, Dalton, Tallong, Bungonia,
Taralga, Yass, Braidwood

Monumental work - Just ring us for a quote

We welcome your enquiries.

**** SUREPLAN as little as a \$1 a week Funeral Fund****

Contact our office

4822 4400



The following is an extract from the Goulburn Herald, Monday August 26th, 1895.

THE RECENT FIRE AT WINDELLAMA.

On Saturday at Mr. J. J. Croker's, Pleasant Hill near Windellama, Mr. H. O'Brien held an inquest as to the origin of a fire on the 3rd instant which consumed Mr. Croker's woolshed and contents.

The shed was a quarter of a mile from the house. It was of slab, roofed with bark, and floored. The contents were about two tons of straw, thirty bags of chaff, a tarpaulin, woolpress, and other things of the value of from £70 to £80. The property was not insured.

Mr. Inspector Fenton conducted the inquiry as representing the police. The inquest lasted from nine in the morning to half past eight at night.

A young man named Charles Henry Armitt (20), who is on bail on remand from the Goulburn police court charged with setting fire to the shed, was amongst the witnesses, as were also two men (father and son) named Stedfut, who gave evidence against Armitt at the police court as reported in last Wednesday's paper.

The younger Stedfut had been charged with stealing straw from Mr. Croker's woolshed. Both these men at the inquest contradicted their previous depositions at the police office, and the younger said also that the greater part of what he swore at the inquest itself was false.

Armitt while giving evidence fainted and had to be taken out of doors, where he was some time before he recovered. The evidence of Lizzie Stedfut, a young woman said to be courted by Armitt, and of her younger sister aged eleven, was very contradictory, the latter stating that she had made a memorandum in her exercise book at her sister's request that Armitt was not at their home on the night of the fire, which the former denied. The coroner cautioned Armitt when giving evidence that he need not answer questions that would incriminate himself. The following is a summary of the evidence, omitting mere repetitions and corroboration :-

Mr. J. J. Croker and his son, Mr. J. W. C. Croker, gave evidence of the contents of the shed and of its being totally destroyed. Mrs. Croker deposed that Mrs. McGregor, a neighbour in whose employ Armitt is, had told her they were continually missing things ; and a witness told her to keep her eye on Armitt, as he had many poor relations.

In a conversation the witness had with Mrs. Stedfut the latter told her that on the day after the fire Armitt had asked her to be careful as the policeman was after her and her daughter Lizzie. Ethel Chard. Mrs. Croker's servant, deposed to seeing Armitt the day after the fire.

Asked him if he missed the shed. He said no and looked in its direction. Witness said it was burned down last night. He said "thank God I wasn't out last night." He then asked what time it was burned. Armitt said he was in Mrs. McGregor's kitchen when the fire occurred; Mrs. James, Mrs. McGregor, and Mr. Tredwell were there, and all saw the fire.

He denied the conversation sworn to by Ethel Chard. Mrs. Croker asked him if he had seen the shed was burned and he said no. Mrs. McGregor engaged a solicitor to defend witness at the police court.

The evidence the Stedfuts gave in Goulburn was mistaken; it was on Friday night he was at their place not Saturday. Charles William Stedfut, had been working off and on for Mr. Croker for twenty years. He had heard his son swear in Goulburn that he and witness were out opossum-hunting on the Saturday night of the fire. He swore a lie, because it was Friday. Armitt was not at witness' house on Saturday.

On Sunday Armitt told witness' wife to look out as Constable Haesy is on the look-out. He told them the shed was burned; that he didn't see it alight, and that when he got home to McGregor's they all saw the light.

Armitt is witness' wife's nephew and comes to see witness' daughter. Mrs. Croker, recalled, confirmed Ethel Chard's statement of her conversation with Armitt. Constable Haesy deposed that W. Stedfut, son of previous witness, when in custody for stealing straw, told witness that Armitt was at Stedfut's house the night of the fire and left about 9.30. p.m. He knew the hour because he had been



Plant Allocation

ANDY DIVALL: 0427 298 200

Truck Allocation

TROY COOK: 0428 298 200

PHONE: 02 4829 8200

FAX: 02 4829 8257

CARRICK HILL VIA GOULBURN

- DAMS
- EROSION CONTROL
- CLEARING
- QUARRIES
- EARTHMOVING
- CRUSHING
- SUB DIVISIONS
- DEMOLITION
- BULK HAULAGE
- CIVIL WORKS

Bitumen Spray Sealing

- Rural roads and driveways
- Urban & residential streets
- Sub-divisions
- Car parks
- Patching

02 4822 8233



Goulburn Sand & Soil

48218244

- DECORATIVE GRAVELS & PEBBLES
- GARDEN MULCHES
- GARDEN SOILS
- COMPOST
- PAVERS & BLOCKS
- ROADBASE
- SAND
- GRANITES
- ROCKS
- RETAINING WALLS
- FIREWOOD
- PIPES



CNR Braidwood & Bungonia Roads
GOULBURN

www.divalls.com.au

opossum-hunting with his father. About a quarter of an hour after he left they saw the fire. He told witness that he cautioned his aunt (Mrs. Stedfut) as before mentioned. Mrs. Stedfut subsequently told witness Armitt was at her place on Saturday night. She said she didn't like to tell on Charlie, they'd all have a down on her.

Lizzie Stedfut also admitted that Armitt was there on Saturday night, Witness attested Armitt; Charles Stedfut told witness that Armitt was at his house the night of the fire. He also told witness that Armitt cautioned Mrs. Stedfut. He said he saw the shed burning as he passed Croker's house but didn't take the trouble to tell him. Thomas Stedfut said to witness "mind, Charlie Armitt is in it," Witness asked in what, Stedfut replied "the burning of the woolshed."

Thomas William Stedfut deposed to telling the constable that he had a suspicion of Armitt. He told witness' mother to beware of Mr. Haheesy, Armitt was at their home a quarter of an hour before they saw the fire. His mother told him to say Armitt was there on Friday night, but he was sure it was Saturday. His mother told him to stick to Armitt, and witness was doing so.

It was because of this he was now swearing that the evidence he gave at the police court and what he had previously sworn to-day was untrue. He knew he was committing perjury when he swore it. Mrs. Susan Stedfut denied that she had told her son to swear as above. Neither her son nor husband were out on Saturday night. She said that Armitt had told her to look out. Armitt was not at her place on Saturday night. Both her husband and son had sworn he was, but he was not. She told Haheesy that Armitt was there both nights.

Mary Jane Stedfut saw the fire. Her brother and father saw it too. Next day Armitt came and told her mother to look out. Armitt was not at her place on Saturday because she made a note of it in a book. Only made the note yesterday. Did so because her sister Lizzie told her. Her father, mother, and sister told her to leave the book at home.

Hannah Eliza Stedfut deposed: Armitt was not at her place the night of the fire. Was there on Friday and Sunday nights. Never spoke to her sister about the fire nor about Armitt. Never told her to make an entry in a book, admitted telling Mrs. Croker that Armitt was at their place the night of the fire, Also admitted saying

to Haheesy "it's no use; I might as well tell the truth; Armitt was there that night."

The jury after about an hour's deliberation returned a verdict of arson against some person or persons unknown.

The remanded case against Armitt is set down for hearing on Friday next at the Goulburn police court.

Hello Everyone,

Our next excursion will be to an old property in Chugga Lane just off the Spa Rd, this will be 18th May.

We have a great day planned for this excursion, we start at 9.30 with morning tea at the Museum, then head off to Chugga Lane for a couple of hours, back to the Museum for lunch. Please let us know if you are interested in attending for catering.

The cost for this excursion will be \$7 for morning tea & excursion & \$12 for Morning tea, excursion, and lunch.

Bookings essential by phoning Joanna on 4844 5125 or by phoning one of our members below.

Hope to see you on the 18th.

The Gold display will be on show for the next few months (without the Nugget) so don't miss out on seeing Windellama's Gold history at the next Market day.

The museum is open on Market Days – the third Sunday of each month 10am – 2pm

We have volumes 1&2 of *Wild Windellama* by Carina Clarke for sale and available at the Museum For \$15.00

There is a selection of Windellama local history books by Tom Bryant and books by a local poet, Rex Hockey, for sale in the museum as well as Motorcycle Grand Prix Posters for only \$20, bookmarks and postcards with images of early Windellama.

NEW MEMBERS ARE ALWAYS WELCOME

For any enquiries please contact:

Rex Hockey 4844 5147 President

Julian Woods 4844 5270 Secretary

Marcia Tatam 4823 6854 Treasurer



MICK'S MULTI TRADES

ABN: 90 178 544 738

Multi Skilled Tradesman

Oallen, NSW

Lic # MVTC 126573

Mob: 0413 059 587

Email: micksmultitrades@gmail.com

**NOW AVAILABLE IN ALL AREA'S IS A MOBILE
MULTI SKILLED TRADESMAN, LOCATED AT
JERRALONG RD, OALLEN.**

**I AM A MECHANIC BY TRADE AND
EXPERIENCED IN MECHANICAL REPAIRS,
HANDY MAN, LABOURER, PLANT OPERATOR
& TRUCK DRIVER.**

**PRETTY MUCH I CAN TURN A HAND TO ANY
JOB. I HAVE ALWAYS BEEN A "LOOK AFTER
THE LOCALS" TYPE OF BLOKE, SO GIVE ME A
GO AND YOU WILL BE PLEASANTLY
SURPRISED AT MY DOWN TO EARTH PRICES.**

**SHOOT ME AN EMAIL OR PHONE ANYTIME,
I LOOK FORWARD TO HEARING FROM YOU.**

**PROUD SPONSOR OF "PEANUTS FUNNY FARM" LOCATED
AT "ADROOK" ON OALLEN FORD ROAD.**



With the cool nights - your tomatoes should be finished. Pick zucchini and pumpkins if the bush is dying off, leave some stalk on the pumpkins to help to keep them from rotting. Do not put any plants with mildew in your compost.



VEGETABLES

Broad beans seeds and onions plants.

You can put seedlings of cabbages, broccoli and cauliflower if the weather stays warm, move them along with a good feed of complete fertilizer or compost tea.

FLOWER SEEDLINGS

That can be planted now- include calendula, stocks, wallflower, alyssum, poppies, viola and verbenas.

JOBS TO DO

You can lift gladioli bulbs, store them in a box or hang them in an airy shed.



Perennial plants such as polyanthus, Russell lupins and delphiniums can be divided, and replanted in and around your garden. Dig some compost into the garden as well as a light dressing of complete fertilizer to help feed the plants.

Remove and destroy all codling moth trap bands.- use a steel brush to expose grubs still embedded in the bark. Prune trees immediately after harvesting.

Prune peach and nectarine trees immediately after harvesting. Cut all the current seasons growth back by half and remove any tall

branches in the centre of the canopy. Water heavily to promote new growth.

Prune raspberry and other brambleberries by cutting out all the dead and exhausted canes.

Clean up strawberry and rhubarb plants by pulling off old and dead leaves. Spread plenty of sugarcane or straw mulch around and under each plant. You can replant your strawberry runners now, use a potting mix prepared especially for acid living plants, if planting in pots. If planting in garden do not add lime.

Passionfruit were slow to pollinate during hot weather. They should be bearing fruit now; keep watered.

Control cherry slug on the leaves of almonds, cherries, plums and other stone fruit by dusting leaves with sieved ash, garden lime or gypsum. These powders kill by drying out the larvae.



When stone fruit become blotchy and shrivel, and young shoots die back from the tips, it's likely to be caused by scab disease. Prune off infected shoots with sharp secateurs. This is important right now, as it breaks the reinfection cycle. Burn, bury or seal infected debris in a plastic bag, and bin. Sterilise secateurs between each tree, by dipping them for 30 seconds in tea-tree oil or methylated spirits, or make up a solution of 1 per cent household bleach and water.

Prune productive perennials and shrubs, such as bay, cinnamon, sage and pineapple sage, to shape. Propagate curry bush, lavender, bay, rosemary, scented-leaf geranium and dianthus by tip cutting.

Use fresh propagating mix and dip cutting in manuka honey to improve strike rate, or rooting compound.



WINDELLAMA PLAYGROUP

at
Windellama Public School
Each Thursday
9.30am – 11.30am



BYO snacks - tea & coffee supplied

Qualified art teacher visiting each fortnight

Bring your bubs & toddlers for a fun morning
Music, stories, sand-play, free-play, art, craft.

FREE!

For more info ring Tony at the school on - 4844 5130
(NO PLAYGROUP IN SCHOOL HOLIDAYS)



SMH Civil Engineering

SMH Civil Engineering Pty Ltd
Strategic Engineering Solutions

- ✓ Project & Construction Management
- ✓ Geotechnical & Environmental Engineering
- ✓ Remediation / Contaminated Sites
- ✓ Waste Management / Resource Recovery
- ✓ Quarries / Mining / Landfills
- ✓ Rail Infrastructure / Asset Management

www.smhce.com.au

info@smhce.com.au

0418 563 888

Postal only - PO Box 999
RIVERWOOD NSW 2210



Goulburn & Southern Tablelands Newest Winery
Cellar Door Upcoming Open Days

Hours – 11am to 4:00 pm

MAY: Saturday 11th, Sunday 12th,
Sunday 19th

~check website for any changes or
call prior for a drop in visit or purchase anytime ~
*25 kms down Windellama Road from Goulburn
turn left into Muffets Road*

email: admin@yarralawsprings.com.au

web: www.yarralawsprings.com.au



133 Muffets Road, Quialigo
Ph 4844 7188

NEXT GENERAL MEETING - Saturday 1st June, 11am. We need a guest speaker for "Show & Tell". - and on Saturday 3rd August, 11am. Guest speaker: Fiona Hammond.



**WORKING BEE AT GALLERY ON TRACK
Saturday 11th May. 11am to 3pm**

THIS IS A VERY IMPORTANT WORKING BEE. THE MORE HANDS THE BETTER!

We hope to see quite a few members turn up to help on the garden area at this working bee. There should be soil to spread and plants to plant. Bring some garden tools if you can as that would be of use. Work clothes that you don't mind getting dirty would also be useful, plus a pair of gardening gloves to look after those crafty and arty hands! There will be a sausage sizzle lunch for participants.

Cherie is asking for members who have any of the following plants to start propagating them now and bring to the gallery for planting on the day: Oregano, Marjoram, Thyme, Sage (low growing varieties), Prostrate Rosemary, Erigeron, Snow in Summer. If you have any other groundcovers you may think suitable (not violets) please let us know.

Saturday 4th May and Sunday 5th May:

A Weekend to Dye For! Kathy Geurts. See March newsletter for details.

If you are interested in this workshop which will fill again quickly, contact Kathy directly on 0403 341 941 or studioamara@gmail.com for bookings and enquiries.

Saturday 18th May. 10am-2pm

Fiona Hammond – Stick weaving 10-2 (Forms at Gallery)

See March newsletter for details.

SHOW & TELL AT MEETINGS:

To make our meetings of more interest to members we are instituting a "Show & Tell". Of course, we will need volunteers from our members to do this. We all have something that we have produced that we could show and talk about and other members will be interested in seeing and hearing what you have done. We need a volunteer for the June meeting.

Goulburn & District Arts & Crafts Inc.

www.galleryontrack.org

email: galleryontrack@gmail.com

Telephone: 4822 7889

GROUPS YOU MAY LIKE TO JOIN IN

To practice your skills or to learn new skills from other members:

Interested members are invited to the following groups running in the crib room

Patchwork - 1st and 3rd Mondays 10.00 am - 2.00 pm

Needlework - 2nd, 4th and 5th (if there is one) Mondays each month 10.00 am - 2.00 pm

ARTIST OF THE MONTH

May 22 - June 16: Carol Bairnsfather – Textile Art

June 19 – July 21: - Toni Valentine

July 25 – August 18: Margaret Harper

September – Penny Saxton

September 26 – October 27 – Fiona Hammond

Oct 30 – November 24: Jane Lyons



Angela and Diane enjoying the opening of their April Artists of the Month. They can certainly take pride in the display of their beautiful works.

THE LOADED DOG HOTEL TARAGO EST. 1848



Hoteliers: Nicole and Mark Ryan
Ph: (02) 4849 4499 Fax: (02) 4849 4603
Wallace Street, Tarago

Live Music @ The Dog

Free Entry

**SOCIAL
DARTS
@
THE DOG**



**PLAY YOUR
FAVOURITE TUNES
ON THE DOGS
NEW DIGITAL
JUKEBOX**



The Dog Bistro

Friday - Saturday - Sunday

Open for Lunch 12 noon - 2pm & Dinner 6pm - 8.30pm



Friday Nights

Kids eat FREE *

*Children under 12 years only.
Must be seated & accompanied by
an adult at all times.



**NICOLES'
fish n' chips
Thursday
6 - 8pm**

**SEAFOOD SUNDAY
From 6pm**



◉ Smoke Free air-conditioned bar

Coffee @ The Dog

◉ Bottle Shop

NEXT MEETING
THURSDAY 9TH MAY, 2013 AT 3PM
AT THE ART SHED
BLACKSHAW DRIVE GOULBURN

THE GOULBURN STREET PARADE

A small contingent of 4 of our members plus two visitors from Melbourne participated in the Street parade. Lesley came armed with a bundle of leaflets which we handed out to spectators along the route - we could have handed out a couple of thousand of them as there were so many spectators. Hopefully some who took the leaflets might appear in our midst in the future. It was certainly an enjoyable event for those of us who walked in the parade and was a great opportunity to publicise the GDAS presence in Goulburn.



Dressed in our best artist's clothes for the Street Parade: Katya, Gail, Aina, Lesley, Alex & friend, Rick.

GDAS WORKSHOPS

SOMETHING SPECIAL FOR MEMBERS

The February general meeting decided that all workshops organised by the GDAS this year will be at no cost (yes free) to members who participate.

You could join the GDAS for \$30 and have a "free" work shop or cheap one as if the tutor is expensive, members may need to pay some part of the costs. For membership application form, go to our website:

www.artsociety.goulburn.net.au

We want an exciting year and there are several workshops planned so far. We want your suggestions for other workshops so if you have ideas contact Helen 4829 2300.



FRIDAY 3RD MAY: OILS & ACRYLICS
LANDSCAPES with MARION SCHUMACHER
(GDAS MEMBER). NOTE THE CHANGE OF
DATE! at Gallery on Track. 10am-4pm

Fees: GDAS members - free. Non-members - \$30. There are still a few vacancies so contact Helen on 4829 2300.



An example of Marions' landscapes

OUR WEB SITE

www.artsociety.goulburn.net.au

Members can be featured on our website. Contact Katya Mortensen if you would like to have some pictures of your works on it.

Members and guests: please use our website to keep up to date. Newsletters and various forms are posted on it.

For those who are not on the net, please try to use it when visiting friends and relatives. You can also access the website at the town library. If unsure how to do that, the friendly librarians will assist you.

WINTER EXHIBITION

This will be held on Saturday 1st and Sunday 2nd June, 2013. Set up will be on Friday 31st May, 2013. More details as to the venue and times will be in our next newsletter.

START PAINTING FOR IT NOW.

Rusty Balls

- Natural bush soaps
- Pet shampoo
- Anti-bug balls - natural insect repellent
- Blind Baking Balls
- Hand made ceramics

Gary & Denise Johnson

4844 5087

sales@rustyballs.com

www.rustyballs.com

SHEPHERD'S HILL NURSERY

321 George St, Marulan

Ph 4841 1404

Fax: 4841 1454 Mobile: 0413 047 105

Look for the house on the hill

For all your garden needs &
acclimatised plants

Potted colour, Seedlings, Bulbs, Fruit trees,
Ornamental trees, Windbreakers,
Shrubs and more
Potting Mixes & quality soils & mulches.
Pots, Statues & Gifts

Gift vouchers & Eftpos available

We are members of NGI NA
Nursery & Garden Industry NSW & ACT



Nirvalley Homestead NURSERY



629 CULLULLA ROAD, TARAGO

T: **4849 4481** M: 0422 112 779

Camellias \$8

Mag. **Little Gem \$35 lge**

Lots of **Salvias \$4.50**

Leylandiis & Photinias
Bare Root Fruit Trees

Sat & Sun 8-5pm, Fri & Mon 10-3pm
Other days—call to check times

Quality Plants • Best Prices

Peter Porter

**MOTOR
TRIMMING**

& Upholstery



0429 918 228

peterporter3233@hotmail.com

- Lounges
- Boat Covers
- Car Interiors
- Boat Canopys
- Tornneau Covers
- Ute Canopys
- Bike Seats
- Canvas Seat Covers
- Canvas Pump Covers
- Seat Repairs

3233 Windellama Road
Goulburn

Church Info

Catholic Church Services

Parish Priest: Fr. Dermot McDermott
Assistant: Fr. Michael Lim

Presbytery & Parish Office
Phone 4821 1022

Sunday Mass will be at 8am on the 2nd & 4th
Sunday at St. Patrick's **Marulan**.

Mass Times in **Goulburn** are:

Saturday Vigil Mass:

6pm (DST) at St. Peter & St. Paul's

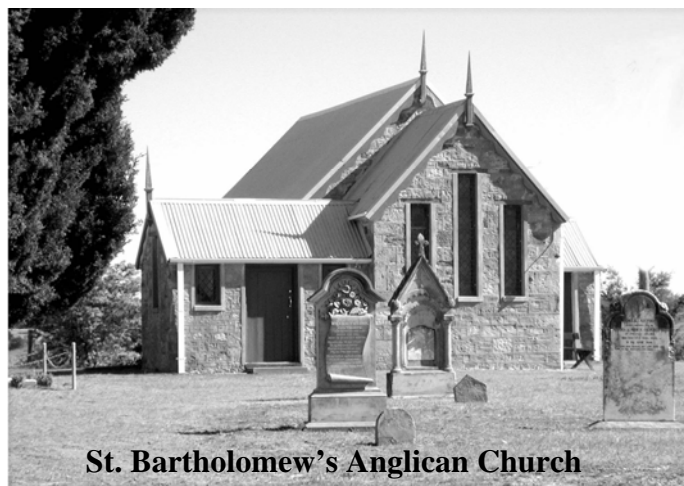
Sunday: 7am. at Our Lady of Fatima,
Nth. Goulburn

Sunday: 10am. at St. Peter & St. Paul's

St. Joseph's Church, Tarago

3rd Sunday of the Month

Enquiries: 4821 1022



St. Bartholomew's Anglican Church

CHURCH SERVICES

May

St. Mark's - Bronte

Sunday 12th – 11.30am

St. Bartholomew's – Windellama

Sunday 26th - 11 30am

**We are hoping that Bishop Stuart will be
joining us on this Sunday.**

**PLEASE NOTE THAT ALL SERVICES WILL BE
HELD AT ST. BARTHOLOMEW'S UNTIL
FURTHER NOTICE**

June

St. Bartholomew's – Windellama

Sunday 9th -11.30am

St. Bartholomew's – Windellama

Sunday 23rd - 11 30am

The Reverend Vanessa Bennett can be
contacted on landline 4821 3631 or mobile
0417 699 700 or by email on
wgbnanglican@bigpond.com

St. Andrews (Anglican) - Tarago

2nd Sunday 9am

St. John's - Lake Bathurst

4th Sunday 9am

NERRIGA

ANGLICAN CHURCH SERVICES

Held at Nerriga Church Hall

2nd Sunday each month at 2pm

(Except Easter & Christmas)

All Welcome

Rainfall Stats

16th March to 15th April



Rosewood, Windellama Road, Windellama
0 ml / 0 days

Amaroo, Roberts Road, Oallen
4.5 ml / 2 days

Gar-Den, Oallen Ford Rd, Oallen
39.25 ml 7 days

Johnno's Store, Oallen Ford Rd, Bungonia
16 ml / 2 days

Tarkierelea, Fernleigh Close, Windellama
ml / days

Willy Weather 15.2 ml / 9 days

Our Advertising Charges

Classifieds - Personal (maximum 2 lines)	FREE	
	Month	Year (11 issues)
Small advertisement (business card size)	\$ 6.50	\$ 65.00
Quarter page advertisement	\$12.00	\$120.00
Half page advertisement	\$25.00	\$250.00
Full page advertisement	\$50.00	\$500.00
Double page discount	\$90.00	
Inserts - \$40.00 for 400 inserts into hard copies		
Typesetting of adverts: \$50		

PAYMENT:

Cheques: payable to *Windellama News*
PO Box 705, Goulburn. 2580

Direct Deposit or EFT: IMB Ltd; BSB 641.800;
A/c 200045794 with Name & advert as detail

**** Unpaid adverts will be cancelled
after one month***

**** All advertising copy must be
accompanied with payment***

All advertising enquiries to Denise Johnson

Fees for Hire of Hall or Supper Room at Windellama Hall

*<u>HALL</u>	ALL DAY	\$200
	DAY 4hrs or less	\$100
	EVENING/NIGHT**	\$200

*Includes Supper Room & Kitchen

** \$2 per hour for heating

SUPPER ROOM (Includes Kitchen)

ALL DAY	\$80
DAY 4hrs or less	\$40
EVENING/ NIGHT	\$100

Use of the premises prior to your booked
function will incur a surcharge of
Supper Room Fee

**To Book please ring W. P. A. Secretary,
Frances Knights on 4844 5157**

TARAGO TRANSFER UPDATE & DRUM MUSTER STATION

**Open Friday to Monday
8.00am—4.45pm.**

**Card required for household waste,
or fees apply.**

Free recycling of the following:
Plastics, tins, oil, batteries, glass,
paper and cardboard.

**Free recycling also of Drum Muster
Chemical Drums providing they are
empty, triple washed and have the lids
removed**

Tipping Fees for Tarago

Sorted Waste - Domestic Residents only

Car, station wagon, small ute or small trailer	\$ 15.00
Medium trailer, large ute or 1-tonne truck load	\$ 20.00
Large trailer load	\$ 31.00

Unsorted Waste and Non-Residents Waste

Garbage & trade waste (uncompacted, per cubic metre)	\$ 75.00
Garbage and trade waste (compacted, per cubic metre)	\$ 128.00
Other unsorted waste— 2 x sorted rate per category	
Hard fill demolition waste not accepted at Tarago	

Animals — Note: *Animal carcasses cannot be
dumped at Tarago as there are no facilities for burial
please refer to Goulburn Mulwaree Council for details
on availability in this area.*

Car Bodies	\$ 54.00
Tyres — Car Tyres (each) - per tyre	
Motorcycle tyres (each)	\$ 8.00
Truck tyres (each) - per tyre	\$ 25.00
Tractor tyres (each) - per tyre	\$ 90.00

Community Information

Windellama Progress Association

Lloyd Turner (Vice President) 4844 5214
Frances Knights (Secretary) 4844 5157

Windellama Rural Fire Brigade

Rex Hockey (Captain) 4844 5147
Graham Kinder (President) 4844 5330
Ellen Sylvester (Secretary) 4844 5407

Windellama Field Day Committee

Heather Caulfield (Secretary) 4844 5120
Frances Knights (Treasurer) 4844 5157

Windellama News

Denise Johnson (Editor, Sec./Treas) 4844 5087
Gayle Stanton (Editor) 4844 5156

Windellama Garden Cub Inc.

Pam Williams (Secretary/Treasurer) 4844 5194

Windellama Hall Country Markets

Bob Shaw 4844 5001

Windellama Historical Society

Rex Hockey (President) 4844 5147
Julian Woods (Secretary) 4844 5270

Windellama Landcare

Warren Yates (President) 4844 5350
Sandra Greville (Secretary) 4844 5047

Windellama CFR

Kevin Muffet 4844 7143

Windellama School P&C

Shelly Andrews (President) 4844 5630
Heather Caulfield (Secretary) 4844 5120

Willow Glen Gardeners

Warren Yates 4844 5350

Wires (wildlife rescue)

Marian Pearce 4844 5244
Southern Tablelands WIRES 4822 3888

Tarago Pony Club

4844 7014

Community Health - Goulburn

4827 3913

Community Transport

4823 4499

Justice of the Peace

Linda Shannon 0429 980 141
Geoff Burns 4849 4330

FOR ALL EMERGENCIES
eg. FIRES / ACCIDENTS

PHONE 000



For Mobile users & Landlines



Important Phone Numbers

Rural Fire Brigades



Windellama	Rex Hockey	4844 5147
Tarago	Ken Vassel	4849 4652
Taylor's Creek	Dave Elward	4849 4240
Mt Fairy/Boro	Mike Welford	4849 4623
Bungonia	Ian Tapper	4844 4460
Gundary	Jason Gray	4822 2903
Nerriga	John Rolfe	4845 9160
Bushfire Information		1800 059 333

www.windellamarfs.com.au or www.rfs.nsw.gov.au

WINDELLAMA PH: 4844 5359 or

CHANNEL 21/209 Base

AMBULANCE



Ambulance Booking	13 12 33
Goulburn Ambo Station	4827 0444

000

Windellama CFR First Aid

Ambulance on triple zero	
Kevin Muffet	4844 7143
SES	13 25 00
Poison Info. Service	13 11 26
Goulburn Base Hospital	4827 3111



Police

Tarago Station -	
Snr. Constable Brad Carey	4849 4411
Goulburn	4824 0799

Other

Goulburn Railway Station	4828 5816
Train info & bookings	13 22 32
www.countrylink.info	
Country Energy - interruptions	13 20 80
Lifeline	13 11 14
Kids Helpline	1800 551 800

May 2013

MON	TUE	WED	THU	FRI	SAT	SUN
		1	2 School Playgroup	3	4 Nerriga Progress Meeting	5
6 P&C Meeting	7 Willow Glen Gardeners	8	9 School Playgroup	10	11	12 St. Mark's - Bronte
13	14 Craft Arvo	15 Nerriga Gardeners	16 School Playgroup	17	18 Progress AGM Historical Excursion	19 Windellama Hall Country Markets
20	21 Craft Arvo	22	23 School Playgroup	24 Weed Workshop	25 Brigade Training & Meeting Rockwiz @ Tarago	26 St. Bart's
27	28 Craft Arvo	29	30 School Playgroup	31		

**For details of times and places - see articles inside this issue
Emergency phone numbers are on the back of this page.**