

In Your Garden
By Irene Turner 

We have already had some light frost, so remove the pumpkin vines and zucchini which have died. Clean up any old plants, anything with mould do not put in your compost.

You can cut back Delphinium and Easter daisy, about 8cm above the ground.

Cut Dahlias stems above a leaf node to stop them rotting.

Perennial plants such as Polanthus and Rusell lupin and Delphinium can be divided now.

Digging some compost into the garden before planting new plants will help them grow.

Vegetable seeds to sow now are Broad beans, they like the cooler weather to grow in.

Give the bed a good dressing of lime.

White onion seedlings can go in now, they need good drainage and a light dressing of complete fertilizer.

Flower seedlings-

Calendula, stock, wallflowers, alyssums, poppies, pansy, viola and verbena can all be planted now. You can lift your gladioli bulbs and store in a dry shed.

Transplanting shrubs and bare rooted plants now help to get them established before winter.

Mulch plants especially deciduous to suppress winter weeds and grasses growing.



CODLING MOTH

This moth has grayish brown wings and lays its eggs on the leaves of apple, pear and quince trees. These hatch into cream-coloured caterpillars which burrow into fruit, eating their way through the core and seeds. They then eat their way out of the fruit and, finding a crevice in the bark or the ground, spin a cocoon. A collar of Hessian or cardboard around tree trunks encourages the caterpillars to pupate there, where they can be collected and destroyed before the moth emerges.

A bait made from Citronella can help.

BAIT RECIPE

Combine one part citronella oil with 10 parts water. Pour the mixture into small yoghurt containers or clean glass jars. Hang the jars in affected trees.

Windellama Garden Club Inc.

Our thoughts are with Bessie, and we hope the clinic at Bowral can help you and that we will see you at home shortly.

We are also thinking of John Ellis at this time and we hope you have a speedy recovery.

Our Mother's Day lunch is on the 17th May, all welcome. Please book in by Friday 12th with Colleen on 4844 5207 or Lynn on 4844 5029.

If you wish to join us on our trip to Crookwell please phone the above numbers to arrange transport.

Our next meeting is on the 10th May at Beryl Kremer's at 10.30am.

All welcome but please bring a plate.



**Willow Glen Road
Gardeners**

**Next get together is at the home of
Cindy Curby**

**596 Willow Glen Road
10am Tuesday 2nd May**

**Please bring a plate for morning tea
& some plants or cuttings to share, and spend
a morning with other gardeners.**

For more info make your enquiries with
Warren Yates on 4844 5350.



Weather Watch

16th March to 15th April

Adrook, Oallen Ford Road, Windellama	25.5ml / 6 days
Timberlight, Oallen Ford Road, Oallen	31.2ml / 10days
Amaroo, Roberts Road, Windellama	29ml / 6days
Gar-den, Oallen Ford Rd, Windellama	26.25ml / 10 days
Johnno's Corner, Oallen Ford Rd	**ml / ** days
Hollow Log, Willow Glen Rd, Tarago	28ml / 5days



Elvis Hejda

Cabinet Maker, Wood Turner

Now trading as

GOULBURN WOODWORKS

Specialising in Custom Built:

Kitchens & Laundry units

Built-in Wardrobes

Solid Timber furniture

Entertainment units, Vanities,

And all repairs & restorations

Also specialising in

Treated pine lattice made to measure

Phone 4823 6044 Fax 4823 6055

113-115 Chantry Street, Goulburn

WEEDS

WEEDS

WEEDS

WEEDS

Do you have problems with weeds
such as serrated tussock, blackberry?
Why not enjoy your week-ends for a change?
Here's the answer - spot or boom your weeds away

STUART MARTIN WEED SPRAYING

SPOT SPRAYING
BOOM SPRAYING
PASTURE RENOVATION

SERRATED TUSSOCK
THISTLES
BLACKBERRY

Ph 4829 5155

Mob 0429 308 191

'Terry-Hie' Braidwood Road, Goulburn

**This is a local business - for the local community
Ring for a quote**



*WINDELLAMA HISTORICAL
SOCIETY Inc.*



I have no idea when the first clothes iron was invented or what it looked like or even from what it was made; however I imagine it was made out of brass or maybe even some sort of stone.

The first iron I saw being used was a 'flat iron' made of iron with a polished bottom as the one in the picture.

Usually you needed two or even three irons if a lot of ironing was being done. The irons were sat on the hot-plate of a wood stove and heated to the right temperature; and then with a pot holder it was picked up and used. And when that one cooled down too much, it was put back on the stove and one of the other ones were used.

In those days a folded blanket was put on the table or bench and a piece of linen, usually an old sheet, was placed over the blanket and this was the ironing board. There were no such things as fold up ironing boards then, at least we didn't have one, and I didn't see anyone with one – not that I made a study of ironing.

You needed an old piece of cloth on which to wipe the bottom of the iron on to remove any 'black' which may have gotten onto the iron from the stove top, as stoves were regularly rubbed over with stove 'black' by means of a brush.

Today's children and even some adults might not be aware but sheets, pillow cases and even underwear were all ironed in the 'good old days'! The linen and men's shirts were starched, and when it was to be ironed it was sprinkled with water before ironing. If something needed to be steam ironed such as woolen trousers or school tunics, a piece of cloth such as a linen tea towel or man's handkerchief (a clean one that is) was soaked in water, wrung out and placed over the garment, and the heat of the iron on the damp cloth created steam. This removed unwanted creases and beautifully creased the trousers etc.

My grandmother who lived at Exeter had a fuel iron, similar to the one pictured, which was fueled with Shellite or petrol, and some were fueled with kerosene which was put into the tank at the rear of the iron and pressurized. The same principal as a pressure lamp or Primus, the temperature being controlled by the pressure. I didn't have the privilege of seeing it used so I am unable to describe the way it was lit or used but I imagine some methylated spirits was ignited as the primary source of heat and then the fuel would be gradually pressurized.

The next 'advance' was the 32 volt electric iron and then the 240 volt iron.



The Museum had lots of visitors on the day of the Vintage Car Rally on 16 April, Easter Sunday and all were very interested in the display of photographs of the original Grand Prix motor cycle race and the activities of the re-enactment in 2004.

**Our next meeting will be held at the
Windellama Hall on
Friday 2 June 2006 at 2 pm.**

Membership fees are now due, \$5.00 for a single membership, and \$7.00 for a family membership.

Remember new members are always welcome.

If you wish to contact us for more information
please ring

Joanna Croker	4844 5125
Cynthia Hudson	4844 5005
Sandra Greville	4844 5047

Article by Rex Hockey

ArTheAD

Bob & Sonja Millis

Fine Art Material

Framing & Materials

Digital Printing & Scanning

Photo Restoration

Art Classes & Workshops

Gallery Sales

Art Books, Cards, Laminating

Internet Sales Australia wide
www.arthead.com.au

358 Auburn St

Ph 4822 6641 Fax 4822 6631

Mob 0417 266 904



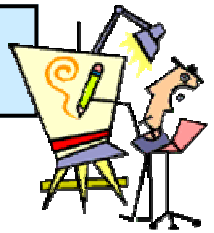
Spinning lessons will be held on Tuesday afternoon of May 9th, the Craft Afternoon at Windellama Hall.

If you wish to begin lessons or wish to share your knowledge please come along.

This day is not limited to spinning, so if you wish to practice other craft, do attend.

All enquiries to Irene Turner 4844 5214

Arts and Crafts



Goulburn Regional Art Gallery

29 April - 27 May

Country Matters - Humphrey Price-Jones

Renowned painter of Australian birds, focuses on the fauna and landscapes of his Crookwell property.

Artist of the Month

exhibition by Aina Atkins

4 May 2006 to 31 May 2006

10am to 4pm

Many other art works, ceramics, spinning and Weaving and other crafts are also on display and for sale.

Goulburn & District Arts & Crafts Centre

Corner Verner & Bourke Streets, Goulburn

Phone: (02) 4822 7889

Open 10am to 4pm DAILY

Admission Free.

Ken Knight - Landscapes

21 April 2006 to 12 June 2006

Landscapes by internationally renowned artist Ken Knight. Exhibition features new work from the South Eastern NSW coast and countryside.

21 April - 12 June 2006

Bungendore Wood Works Gallery

Kings Highway, Bungendore

Ph: 6238 1682

Goulburn & District Arts & Crafts Inc, are offering a number of courses at the centre, situated at the corner of Bourke and Verner Street, Goulburn.

1-DAY COURSES:

* Felting Hats & Bags with Carol Dival: Sunday 7 May. Ph: 4821 2572

* Calligraphy with Alison Lawrence: Wedding invitations on Saturday 20th May & Playing with B nibs on Saturday 17 June. Phone 4822 0024.

All enquires or bookings to the tutor of relevant course.



Gluten Free Recipes

Gluten Free Sesame Brittle

- 2 tblsp sesame seeds
- 2 cups sugar
- 3/4 cup water
- Tblsp golden syrup
- 60g butter
- 1/2 tsp bicarb soda

Place sesame seeds in pan, stir constantly over heat until lightly browned, then cool.

Grease and line a 23cm square tin with foil, extending foil over sides of tin.

Combine sugar and water in pan, stir over heat without boiling until sugar has dissolved.

Increase heat, boil without stirring until golden brown, about 15 minutes. Test by dropping a teaspoonful of mixture into a cup of cold water; it will set to a hard crack when it is ready.

Add golden syrup and butter and stir gently over heat until just combined.

Gently stir in sesame seeds and soda.

Pout into tin, stand for about 5 minutes or until nearly set, lift out of tin and mark into squares with a knife, cutting nearly all the way through.

When set, cut or break into squares.

Brittle can be made and stored in an airtight container at room temperature for up to 2 weeks.

Gluten Free Pancakes

- 1/2 cup buckwheat flour
- 1/2 cup rice flour
- 1 tsp baking powder
- Pinch of salt
- 1 tblsp caster sugar
- 1 egg, lightly beaten
- 1 cup gluten free soy milk
- 1 tblsp olive oil
- 125g low fat smooth ricotta cheese
- 125ml maple syrup
- 200g raspberries

Sift flours, baking powder and salt into a large bowl. Stir through sugar. Combine egg, milk and 1 tblsp of the olive oil in a jug. Whisk into flour. Rest for 20 minutes.

Heat remaining oil in a large frypan. Drop 2 tblsps of the batter into the pan, cook until bubbles appear, turn and cook the other side.

Combine ricotta with a tblsp of maple syrup in small bowl. Serve pancakes with ricotta mixture, remaining maple syrup and raspberries. Makes 10.



Hoteliers: Nicole and Mark Ryan
 Ph: (02) 4849 4499 Fax: (02) 4849 4603
 Wallace Street, Tarago

Live at The Dog...

 *
 * Saturday May 20
 * MISTEN
 *
 *
 * Saturday June 17
 * VICTORIA BAILLIE
 *
 *
 * Friday July 7
 * TRAVIS COLLINS
 * & Full Band
 *
 *
 * Saturday July 29
 * DARREN COGGAN
 *
 *
 * FREE ENTRY
 *

Joker Draw • Friday Nights

\$1500+
 Jackpots by \$50 each week

**Chef's
 SEAFOOD SUNDAY
 From 6.00pm**

**Open for Lunch and Dinner
 Friday, Saturday, Sunday**

**Friday Nights
 KIDS EAT FREE***

*Children under 15 years only. Must be seated and accompanied by an adult at all times.

NEW NOXIOUS WEEDS POLICY

Goulburn Mulwaree Council was updated on changes to the Noxious Weeds Act at Tuesday night's Council meeting and will exhibit draft noxious weed management policies over the next four weeks for public comment. Council's Manager of Environmental Services Sonia Spotswood reported to Council that a number of amendments to the Noxious Weeds Act 1993 were introduced on 1 March 2006.

Under the changes the definition and classification of noxious weeds have been rationalised from the existing 13 categories into five, i.e.

- **Class 1 - State Prohibited Weeds** are plants that pose a potentially serious threat to primary production or the environment and not present in the State or are present only to a limited extent.
- **Class 2 - Regionally Prohibited Weeds** are plants that pose a potentially serious threat to primary production or the environment of a Region to which the order applies and are not present in the region or are present only to a limited extent.
- **Class 3 - Regionally Controlled Weeds** are plants that pose a serious threat to primary production or the environment of an area to which the order applies, are not widely distributed in the area and are likely to spread in the area or to another area.
- **Class 4 - Locally Controlled Weeds** are plants that pose a threat to primary production, the environment or human health, are widely distributed in an area to which the order applies and are likely to spread in the area or to another area.
- **Class 5 - Restricted Plants** are plants that are likely, by their sale or the sale of their seeds or movement within the State or an area of the State, to spread in the State or outside the State.

Under the amendments Goulburn Mulwaree Council has developed a policy for the control of Class 4 Noxious Weeds. This policy specifies the specific control measures for each weed whether by physical, mechanical, chemical and biological control. Weeds listed for local control include:

- African boxthorn
- Bathurst/Noogoora/ Californian/ cockle burrs
- Chilean needle grass
- Harrisia cactus
- Pampas grass
- Prickly pear
- Scotch broom/ English broom
- Serrated tussock
- Sweet briar
- African lovegrass
- Blackberry
- Fireweed
- Nodding thistle
- Paterson's curse, Vipers bugloss, Italian bugloss
- Rhus tree
- Scotch thistle, stemless thistle, Illyrian thistle, Taurian thistle
- Sifton bush
- Wild radish

"Council Noxious Weeds inspectors currently systematically work across the whole local government area and negotiate with landowners to control noxious weeds. Failure to control weeds will result in the issue of a notice. Landholders with large infestations are advised to develop Weed Management Control Programs.," said Mrs Spotswood,

"Weed Notices can continue to be issued under the amended Act. However before such a notice can be issued Council must issue a 'Notice of the Intent to issue a Weed Control Notice'. This arrangement is consistent with other legislation," Mrs Spotswood added.

The amendments now provide for both the owner and occupier to be responsible for complying with the notice not just the occupier.

Where a notice has been issued under the Act a program can be submitted to address ongoing weed management. Such a program must include:

- Owners details
- Land description
- Map of weed infestations
- Management details including proposed control work
- Duration of the program (5 years max)

The Management Plan for the Enforcement of Class 4 Noxious Weeds and the Noxious Weed Management Program Guidelines will be placed on public exhibition and comments are welcome.

Inside Your Local Council

.... Keeping you in touch with the latest from Goulburn Mulwaree Council.

Last month I wrote about change including amendments to the Noxious Weed Act 1993. Council staff are currently preparing the Noxious Weed Management Program Guidelines soon to be placed on public exhibition. These will be adopted if no significant objections are received.

Council Committees

Another important change to the way council currently operates relates to committees. Instead of continuing the previous 20 odd committees, councillors resolved at the March meeting to adopt a revised committee structure to be implemented from July 1, 2006. It will be made up of the following four groups:

- Environment Advisory Committee
- Community Services Advisory Committee
- Facilities Advisory Committee (these three committees to be made up of 2 councillors & no more than five community reps with the Mayor as an ex officio member)
- Community Liaison Forum to be chaired by the Mayor & open to all elected councillors plus up to 30 community members.

By now some of you will have responded to the ads placed in the Goulburn Post seeking expressions of interest from interested persons keen "to participate in the (council) decision making processes in an advisory capacity".

Community Outreach Meetings

Council is also trying to bring the action closer to the people through future Community Outreach Meetings to be held in various rural villages across the Goulburn Mulwaree area. The agendas for these meetings will focus on the concerns of the area where the meeting is being held. Meetings may be held in Parkesbourne, Lake Bathurst, Towrang, Marulan, Tallong, Windellama, Tarago & Bungonia.

Council Boundary Adjustments.

These have not disappeared off the agenda for some. A letter tabled at the April Council meeting indicated that Palerang Council continues to actively pursue this issue. At their March meeting a resolution was passed to present a submission to Minister for Local Govt, Mr Hickey asking him "to refer unresolved boundary adjustments with Queanbeyan City Council, Yass Shire Council, Upper Lachlan Council & GMC to the NSW Boundaries Commission for resolution."

A **Community Water Grant** has been received from the Australian Government to the value of \$50,000 to be matched by council & community funds to install bore pump & tanks & irrigation systems on Eastgorve South & Carr Confoy sports fields.

- **Main Road 92** is also very much back on the agenda. This road is to be a transport link from Nowra to the west. Funding has been announced for the section of MR 92 from Nowra to Nerriga and the route beyond Nerriga is yet to be finalised. At the April meeting, councillors adopted a recommendation to endorse the proposed route of MR 92 (beyond Nerriga) from Oallen Ford through Tarago & on to Collector and that this route be included in Council's 2020 plan.

Current rural roadworks underway

include the near completion of Mayfield Road subdivision private works; near completion of Windellama Road stage 1 (Painters Lane) & commencement of Windellama Road stage 2 rehabilitation near the airport; commencement of realignment of Cullulla Road; continuing resealing of rural roads; preparation is underway to call for expressions of interest for the design of the Komungla Bridge replacement & Towrang Road drainage maintenance with jute mesh has begun. A current audit of Railway Level Crossing signage is almost complete.

Blues Festival – should we (the council) or shouldn't we run this festival? This is currently a major topic of concern & discussion for councillors who plan to spend even more time trying to determine if council should continue to organise this festival. Should it be put back in the hands of private entrepreneurs? Should it be held at a single venue (as it was in the early years at the the showground) or over multiple venues in the CBD (as in recent years)? What do you think? Please tell me what you think so I can take your views to our next discussion.

Should these or any other issues interest you and if you have matters you want me to raise in Council, please contact me on 02 4844 6269 or write c/- 694 Collector Road, Tarago 2580 or send an email to dasturji@goulburn.net.au

You can also keep in touch with Council workings & even read the monthly Council meeting minutes on www.goulburn.nsw.gov.au

Cr Denzil Sturgiss

CHURCH NEWS

Catholic Church Services

St Patrick's Church, Marulan

May

Saturday 6th 4 pm.
 Saturday 13th 4 pm.
 Saturday 27th 4pm

Goulburn Parish

Welcoming Catholics Home Programme begins

When: Wednesday 3rd. May

Time: 7.30-9 PM

Where: Presbytery 36 Verner St.,

Who is welcome? Everyone

CONTACT: 4821 4754 after 5 pm.

You can still be part of the programme even if you can't come to the first night.

St. Michael's, Bungonia

Rosary on Mondays at 12 noon

Contact 4844 4446

St. Joseph's Church, Tarago

14th May 10.30am Mass

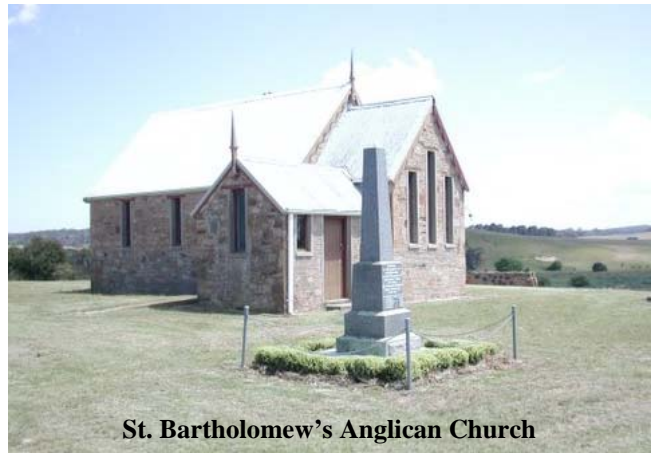
28th May 10.30am Holy Communion

Parish Priest: Fr. Tony Percy

Assistants: Fr. Damien Styles and

Fr. Francis Kolencherry

Contact 4821 1022



St. Bartholomew's Anglican Church

Anglican Church Services

May

St. Mark's - Bronte

Sunday 14th 11.30am **Patronal Festival**

St. Bartholomew's - Windellama

Sunday 28th 11.30am

June

St. Mark's - Bronte

Sunday 11th 11.30am

St. Bartholomew's - Windellama

Sunday 25th 11.30am

Notices

At Bronte on May 14th the Patronal Festival will begin at 11.30 and be followed by a light luncheon in the Church grounds. A plate of food to share would be appreciated. Everyone is welcome.

The next meeting of the Windellama Anglican Women will be held at "Fassifern" Windellama Road Windellama : 12 noon on Tuesday 9th May.

 Our Rector Robert Lindbeck may be contacted on 4821 3631

Although both our Churches are nominally Anglican, worshippers of all denominations are welcome at all services.

"The Lord is My Shepherd"

Goulburn Bible Baptist Church

Cnr. Mary & Hume Streets

Pastor Dennis Smith

Enquiries: 4821 9822

Sunday Worship Service: 10.30am

Sunday School: 10.30am

Prayer / Bible Meetings:

Wednesday Night 7.00pm

Sunday Afternoon 4.30pm

Youth Group:

Friday 5.30pm

Not on in school holidays

Radio Ministry:

2GCR 103.3 FM

Tuesday 6.00 – 9.00pm

Community Contacts

Windellama Progress Association

Lloyd Turner (President) 4844 5214
Cathy Meehan (Secretary) 4844 5554

Windellama Rural Fire Brigade

Lynton Roberts (Captain) 4844 5118
Bev McGaw (Communications) 4844 5147
Sue Roberts (Treasurer) 4844 5118

Windellama Field Day Committee

Judy Alcock (Exec Officer) 4844 5188

Windellama News

Denise Johnson (Editor) 4844 5087
Cathy Meehan (Sec / Treas) 4844 5554

Windellama Garden Cub Inc.

Lynn Stockford (Sec / Treas) 4844 5029
Colleen Ellis 4844 5207

Windellama Hall Country Markets

George & Annemarie Webb 4844 5038

Windellama Historical Society

Sandra Greville 4844 5047
Joanna Croker 4844 5125

Windellama Landcare

Greg Knights (President) 4844 5157
Shirley Cornish (Secretary) 4844 5101

Nerriga Landcare

Di Roberts (President) 4844 5344
Helen Rolland (Secretary) 9555 8676

Jacqua Creek Landcare

Sue Armstrong (Secretary) 4844 4364
Ken Moran (Chair) 4844 4234

Wires (wildlife rescue)

Brent Brooke 4844 5470
Southern Tablelands WIRES 4822 3888

Community Health Goulburn 4827 3913

Justice of the Peace

Linda Shannon 0414 275 873

**FOR ALL FIRE
OR EMERGENCIES
PHONE
000**

Important Phone Numbers

Rural Fire Brigade

Windellama	Lynton Roberts	4844 5118
Tarago	Des Kingston	4849 4503
Taylor's Ck.	D Elward	4849 4240
Mount Fairy	F. Gannel	4849 4558
Bungonia	Ian Tapper	4844 4460
Gundry	Dennis Borlan	4821 6821

**PHONE 4844 5359 or
CHANNEL 21/209 Base**

Windellama SES First Aid

Graeme McFarlane	4844 5506
Kevin Muffet	4844 7143

Police

Tarago Snr. Const Glen Cassidy	4849 4411
--------------------------------	-----------

Goulburn Base Hospital	4827 3111
-------------------------------	-----------

Ambulance	000
------------------	------------

**For Mobile users
in case of emergencies dial
112
And it will be treated as a 000 call**

May 2006

MON	TUE	WED	THU	FRI	SAT	SUN
1 Bungonia Quilters	2 Willow Glen Gardeners Craft Afternoon	3	4	5	6 Back to Basics Weekend	7
8 Bungonia Quilters	9 Craft Afternoon <i>Spinning</i> Anglican Womens meeting	10 Windellama Garden Club meeting Field Day Meeting	11 Rural Watch meeting Tarago	12	13 Just Trivia Night	14 St. Marks Bronte
15 Bungonia Quilters Education Week	16 Craft Afternoon School Open Day	17 Mother's Day Lunch	18	19	20 Progress AGM	21 Poultry Auction Goulburn
22 Bungonia Quilters Rural Watch meeting Bungonia	23 Craft Afternoon	24 School Afternoon Show	25	26 News Deadline	27 Fire Brigade Training & Meeting	28 St. Bartholomew's
29 Bungonia Quilters	30 Craft Afternoon	31				

For details of times and places see articles inside this issue
Emergency phone numbers are on the back of this page.