



Published Monthly

Hard Copy Distribution 400 - Website : 6,000 average/month

Windellama, Oallen, Nerriga, Bungonia, Mayfield, Quialigo, Lake Bathurst, Bungendore & Tarago

WINDELLAMA HALL COUNTRY MARKETS



Sunday 21st July
9am to 1pm



Homemade Jams & Preserves
Pre loved toys, books & tools
Locally produced honey
Lots for the sewing enthusiast
Hand made baby treasures
Locally grown plants
Rawleigh Healthcare
Scented candles
Hand made knitted goods
Alpaca clothing
Food and refreshments
Enquiries

Lloyd Turner 4844 5214

Plenty of parking
Museum open



Coming Events...

Annual Subscriptions - please send your details and **\$30** (cheques payable to 'Windellama News') to cover the annual cost of postage.

All cheques please post to:

The Secretary, PO Box 705, Goulburn. 2580

* Unpaid subscriptions will be cancelled after one month

If you have any short articles, anecdotes, or something else interesting about yourself, your family, or the community; please write it down and drop it in our letterbox at the Hall. We will edit it and publish it in the Windellama News.

A LOCKED POSTAL BOX IS AT THE FRONT OF THE HALL, 3444 OALLEN FORD RD, IN THE STONE WALL FOR THE COLLECTION OF ITEMS FOR PUBLICATION

Items left in the box after the deadline will not be collected or included in the News

Articles, adverts, etc may also be sent by email to:

newswindellama@gmail.com

Adverts sent by email will not be inserted unless payment is received by the deadline.

Our Policy on Receipts

The Windellama News makes out a receipt for all advertising payments made to the paper. We don't post out receipts to save cost and we assume that the appearance of the advertisement in the paper could normally be taken as proof of payment. If you require a posted receipt please include a stamped self-addressed envelope with your payment.

It would be greatly appreciated if anyone sending money to the Windellama News would include their name and address and a note saying what it was for and put it in a sealed envelope. This would avoid a lot of confusion and uncertainty.

Notice to advertisers, article submitters & readers

The Windellama News is published and authorised by the Windellama Progress Association Inc. Whilst every care has been taken in the production of the News & publishing to the web page on the community website, the editor takes no responsibility for any inaccuracies, errors or omissions. All such contributors by forwarding advertising, notices, & articles, agree to indemnify the publisher & warrant that the material is accurate & neither deceptive nor misleading, in breach of copyright, defamatory or in breach of any other laws & regulations.

The responsibility for advertisements complying with the Trade Practices Act lies with the person, company or agency submitting such for publication. Original material appearing in this newsletter is copyright. It may be reproduced in part or in whole for the benefit of the community, provided that the source of the material is fully acknowledged. If you have any queries about using material from the Windellama News, please contact the editor.

July

7 Windellama Progress Association AGM # the hall 11.00 am

7 Nerriga Produce Market @ Nerriga Hall
27 Windellama RFS Meeting and Training

August

10 Cake Auction

Inside this Issue.....

Community Noticeboard	3
Windellama Garden Club	5
SES/	7
Nerriga	9
Windellama /rfs	11
Historical	13
Nerriga Garden Club	15
School	17
Landcare	19-23
Mens Shed	23-25
In Your Garden	25
Willowglen Gardeners	27
Classified Ads	28/30
Church Information	29
Community Information	31
Calendar	32

DEADLINE FOR ALL ISSUES IS THE 20TH OF THE PRECEEDING MONTH

YOUR WINDELLAMA NEWS IS PRINTED BY BUSINESS REQUISITES, GOULBURN

Community Notice Board

Bungendore Medical Centre will be running a Q Fever vaccination clinic later in 2019. If you are interested please email nurses@bungendoremicalcentre.com.au and I will forward some additional information.

Diane Bowden
Registered Nurse
Bungendore Medical Centre



Windellama Progress Association

Windellama Progress Association AGM

All Welcome

Sunday 7th July 2019 at 11am at Windellama Hall.

Nominations for Committee positions to Secretary 7 days beforehand

Progress membership fees \$5 per person due 1st July.

The Windellama Country Fair & Community Auction (which was held back on the 6th of April), was a wonderful success overall. We would like to take this opportunity to say a massive thank you. We mean it.....Thank so much;

- ♦ to more than 20 Volunteer workers, who represent just about every Volunteer organisation in our community. They came together and worked tirelessly in the weeks leading up to, on the day of, and with clean-up, accounting etc, after the event. A big job, done well!
- ♦ to Windellama Progress Association for their assistance and support in enabling the event to proceed.
- ♦ to the Windellama Garden Club for helping us bring these events together in the spirit of friendship and co-operation, -so everyone could benefit.
- ♦ to our fabulous Auctioneer, Graeme Welsh of Graeme Welsh Real Estate
- ♦ to the **more than 500 people** who came along to support and help make this event, a truly happy and fun family day.



Although the Auction itself was smaller than previous years, we raised a total of	\$8410.00
The amount paid out to "sellers" was	<u>\$6574.50</u>
The net donation was therefor	\$1835.50
Plus Net Licenced Bar Porceeds	\$ 150.00
Plus Net Kitchen Proceeds	\$1,500.15
Plus Net Proceeds from 50:50 Draw	\$ 172.50
Plus gate donations	\$ 510.00
Plus other (top-up) donation	<u>\$ 131.85</u>
Total donations for Community Support	<u>\$4,300.00</u>

All monies were counted by at least two Volunteers responsible for each functional area this was and validated by third parties, to ensure 'good governance' and integrity throughout.

As was widely promoted prior to the event, and after collaborative discussions amongst the key committee members and discussed many of participating organisations, it was resolved that all proceeds are being disbursed to support Windellama Community Volunteer organisations as follows; Garden Club: \$250, Landcare \$250, Public School P&C : \$150.00 plus Little Athletic: \$850.00, Peanuts Funny Farm: \$500, Windellama Rural Fire Brigade and State Emergency Service Social Funds: \$1,000.00 each, Historical Society \$300.00. The last few payments are being made as relevant account details are being provided. To all who "rolled up you sleeves" and helped us..





JCF Contractors have the manpower, equipment and experience to complete your custom project to budget, to spec and on time.

JCF CAN ASSIST WITH: Road Works • Shed Sites • Driveways • Site Works • Septics
• Arenas • Trenching • Demolition • Landscaping • Rural Fencing • Earthmoving
• House Excavation • Temporary Fencing • Rubbish Removal • Footing & Piers

JCF EQUIPMENT: Trucks • Dozers • Rollers • Graders • Bobcats • Tippers
• Watercarts • Excavators • Gravel Supply

0428 624 966

Call Jon for a free assessment of your property
Servicing Goulburn & surrounding areas.



MANPOWER, EQUIPMENT & EXPERIENCE

Windellama Garden Club Incorporated News

May 2019 Rainfall

The rest of May saw only an extra 4mm fall giving a total of 20.25mm for the month at our place.

June 2019 Rainfall

So far for June we have received 54.5mm of rain. This includes a drop off 40mm plus sleet earlier in the month. As usual, some properties received up to 3 to 4 times the amount we received, or so they say! It would be interesting to be able to measure how much moisture was in the sleet received.

The rainfall so far this month is the best June drop since 2016 when we received 177mm at our place.

John Marshall (Johnno)

It was a good turnout of people that turned up to celebrate the life of John Marshall (Johnno) on Sunday 26th May at the Windellama Progress Hall.

In our garden

With all the rain this month comes the down side weeds and more weeds. It would be great if the pastures grew grass as quickly as the weeds grow. In the beds that will not be used to spring we are going to cover with black plastic. We hope this will kill the weeds by preventing sunlight to them and at the same time compost them. Before we cover the beds I intend to spread some blood and bone or super phosphate over them.

The warm weather received in May saw some of the Asian greens sprout flowers but at least you can still use them in stir fries etc. We always leave a couple of plants go to seed and shed their seed in the garden. Seedlings raised from the self sown ones seem to adapt better to our garden soil and produce well. Normally, we don't transplant, just leave them where they are.

In our garden we grew some really nice Zucchini's and round Marrows that we saved the seeds from. We also saved seed from a tomato that we liked. I'm hoping that they haven't cross pollinated with something else. Time will tell.

After spraying the Broad Beans with an organic pesticide and applying liquid seaweed and potassium they have improved and doubled in height.

It's taken awhile but the soil in our vegetable garden has improved dramatically. I put it down too the original input of mushroom compost to improve the acidic soil. Then since that application 5-6 years ago regular applications of Dynamic Lifter before each planting, yearly application of crushed cow manure and mulching with sugar cane mulch when on special. Also, applying Dolomite when required.

Cake Auction Saturday 10th August

Each year our garden club holds a cake auction for a really special organisation the Goulburn Can Assist Group. People that have sought help from this group will tell you how important they are especially when they are doing it tough.

Donations of cakes etc., will be greatly appreciated and can be brought to the Windellama Progress Hall on Friday 9th August between 9.30am and 11am or Saturday 10th August after 9.30am. Auction starts at 12 noon approximately.

Set-up will be on Friday 9th August between 9.30am and 11am, maybe a bit longer and preparation for the auction will be from 9.30am on the Saturday.

Help for this event will be greatly appreciated on the Friday or Saturday.

Harry Simm

Secretary

Windellama Garden Club Inc.

ALLSORTZ TOWING

(TTA Lic no 99003)

Goulburn – Southern
Highlands and
Surrounding Areas

24 hours – 7 Days

Great Rates

**ALLSORTZ
TOWING**



Graeme

M: 0403 673 167

E: allsortztowing@gmail.com

**7 Days
24 Hours**

\$\$\$\$\$

CASH\$\$\$\$\$PAID FOR

Unwanted Cars, Trucks, Tractors, Trailers and Machinery

We will cart anything

If we can fit it we will move it

CALL GRAEME ON 0403 673 167

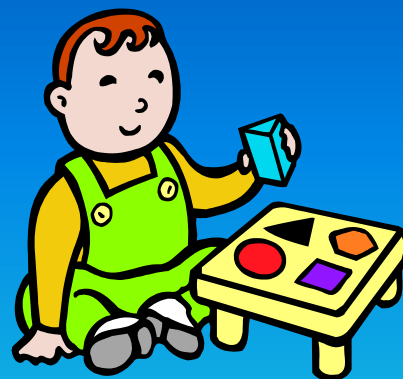
WINDELLAMA PLAYGROUP

at

Windellama Public School

Each Thursday

9.30am – 11.30am



BYO snacks - tea & coffee supplied

Qualified art teacher visiting each fortnight

Bring your bubs & toddlers for a fun morning

Music, stories, sand-play, free-play, art, craft.

FREE!

Windellama SES First Aid & CFR

Our CFR Unit is averaging a callout a week these days and the SES side has had a couple of calls recently, due to wind and rain damage. Training is continuing as per schedule as far as possible.

I wish to pay tribute to our Local Historian, Tom Bryant. His informative past History and the present activity relating to the Lansdowne Bridge is a credit to him. His article in last months Windy News prompted me to make mention of his worth, thanks again Tom.

The major problem of impatient drivers still exists as far as DOUBLE WHITE LINES are concerned, they seem to be a challenge to some drivers.

Kevin Muffet
Deputy Unit Commander.
Windellama SES/CFR

Anzac Day at St Bartholomew's Church

Thank you to Michael Lees who sent these pictures of the ANZAC day memorial .



Craft @ Windellama Hall

Craft meetings are suspended for the cold months of July and August.

We'll be back in September.

For more information please call Irene Turner

WHY CHOOSE US?

Ando's Plumbing has been in the plumbing industry for over 17 years. We are highly trained, well-respected, and licensed. When you use Ando's Plumbing you can feel confident in knowing that all your plumbing requirements will be conducted with the utmost professionalism and care.

- ✓ Locally owned and operated
- ✓ We deliver prompt and efficient service
- ✓ Obligation free quotes
- ✓ Competitive pricing
- ✓ No job too small

For all
Your
Plumbing
Needs

EST 2012
ANDO'S
PLUMBING

PLUMBER - DRAINER - GAS FITTER

0478 050 262

ryan@andosplumbing.net.au
www.andosplumbing.net.au

LICENCE No. 215068C
ABN: 48 925 814 381

- * Drainage investigations
- * Laundry upgrades
- * Water tank installations
- * Pump repairs and maintenance

- * Leak detection
- * Sewer and drain cleaning
- * Hot water systems
- * Bathroom upgrades
- * Kitchen upgrades

- * Pipe repairs and replacement
- * Backflow testing
- * Showers, baths, sinks, taps and Toilets

Nerriga Progress & Sporting Association



Nerriga Progress held another successful Cake Stall and Sausage sizzle on the Saturday of the Queen's Birthday long weekend.

Although it was a very cold day, many folk dropped by to buy cakes, have cups of tea and enjoy a sausage sandwich with onions.

Thanks to all who helped on the day, and with the baking and sausage sizzle cooking.

And thanks to the excellent work by Justin Parr of J. Parr Rural Contracting – Nerriga Hall now has a beautiful new fence around it. Ably assisted by our Vice President, Colin Temple

Nerriga Produce Market's next opening is Sunday, July 7 from 9am to 1pm.

NERRIGA HALL fees for Hire of Hall and Supper Room

Hall -

Full Day \$200

Half Day \$100

Supper Room - \$60

Supper Room &

Kitchen \$100

* GST to be added to all fees

Security/Cleaning Fee \$100

Refundable on inspection

To book please contact Helen

Rolland 02 4845 9115

helenrolland@bigpond.com



~~The Loaded Dog Hotel~~



Tarago EST 1848

Hoteliers: Nicole & Mark Ryan www.loadeddoghotel.com 02 4849 4499

1 Wallace Street TARAGO NSW 2580 | 02 4849 4499 | loadeddoghoteltarago@gmail.com

LIVE MUSIC @ THE DOG

July 20th

Jake
Sinclair
@ 9pm

August 17th

Aleyce
Simmonds
@ 9pm

Social Darts

3rd, 17th and 31st July
starting at 7:30pm

Come alone
or bring a
team.



Escape the winter
cold and relax by
one of our 3 cosy
open fires inside or
in the beer garden
each Friday night!



The Dog Bistro is open 7 days for lunch and dinner

Sunday to Wednesday 6pm - 8pm

Thursdays (Nicole's Fish'n'chips) 6pm - 8pm

Friday and Saturday 6pm - 8:30pm

Lunches 7 days 12noon - 2pm



NSW RURAL FIRE SERVICE

This month should see the completion of a full kitchen renovation at the Windellama fire station. The renovation is a significant upgrade from our previous facilities with additional stainless steel food preparation areas, upgraded electrical and plumbing as well as gas electric oven with rangehood.

The kitchen renovation has been a long term project over several years and special thanks goes to our Catering Officer Marlene Carmichael and Life Member Marten Schutterups for their efforts in bringing this to completion.

The new facilities will help us provide meals for our volunteers as well as enable us to host regional training activities which will help our members to participate in some specialised training without the need for long travel.

Thank you to the Windellama Community! Your donations have funded this much needed upgrade.

Fires Near Me is the official application of the NSW RFS, providing information about bush and grass fires across NSW. *Fires Near Me* has been updated with a range of new features, including the ability to add Watch Zones. You can now select up to 10 locations to keep watch on and be notified about incidents or other important information affecting your area.

The app shows incidents from all agencies including the NSW Rural Fire Service, Fire & Rescue NSW, National Parks & Wildlife Service, and Forestry Corporation.

Download it now and get familiar with the features of the app before you need it in an emergency. To download the app and the latest update, visit the app store on your smartphone or tablet.

Even though winter has well and truly arrived and permits are no longer required, you must still notify your neighbours 24 hours before burning a pile and notify the Southern Tablelands Zone Office on 6226 3100 during business hours and before 3pm Friday. If you light a fire, you must stay, supervise and monitor it until it is well and truly out. If you see an unattended fire call 000.

The Facebook pages of the Windellama Brigade and the Windellama Community are helping everyone share information in real time so please like and follow those pages. Some clever residents have even been using the community page to notify the community that they are planning a pile burn.

If you would like to join the brigade contact us on Facebook: [NSW RFS – Windellama Brigade](#) or call 4844 5359 for more information.

Next Training; Sat 27 July 1.00 pm. Next General Meeting; Sat 27 July 4.00 pm

Brigade Enquiries 4844 5359
Fire Control Centre Yass 6226 3100

Facebook: NSW RFS – Windellama Brigade
President Rex Hockey 4844 5147

Captain – Paul Alessi 4844 5149
Snr. Deputy – Brett Vilnis 0416 222 747



Johnnos corner

4239 Oallen Ford rd

Under New Management

Now open 7 days till 6pm

Now selling fresh ground coffee, enjoy with a muffin or a selection of our sweets

Enjoy our new breakfast
& lunch menu



Please come in and try our new selection of frozen favourites as well as all the scrumptious food from our menu. Many new updates to the store as well as new additions to the menu. Come in from 8am-6pm for a good feed, general shopping or even just for a friendly chat, Johnnos is a family business dedicated to serving the community with a smile.

Try our pizza
range for breakfast
or lunch

Telephone
4844 5456

Booyong Alpacas

2217 Windellama Rd.

Quialigo. NSW. 2580.

Tel. 02 4844 7267.

Mob. 0417 658730.

Web. www.booyong.com.au

Like us on Facebook

www.facebook.com/booyongalpacashop

Email: booyongalpacas@optusnet.com.au



Breeding Coloured Huacaya Alpacas

since 1997 with a current herd of 175 Alpacas

Alpaca Sales & Stud Services

On Farm Alpaca Shop

selling 100% Booyong Alpaca Products
& Selected Imported Alpaca Garments.

Call us for advice or to visit the farm & view
our Alpacas & Shop.



Naturopath & Nutritionist
Now taking clients Monday to Thursday

Hi, I'm Tania, a local naturopath and nutritionist. Watch this space as I plan to practice in the new shops in Tarago when they are completed. In the meantime, you can book into my home clinic Monday to Thursday.

Naturopathy benefits everyone – those seeking to prevent disease, increase energy and maximise health as well as those seeking to manage existing health conditions, especially chronic health conditions.

For more information visit my website:
shalomhealth.com.au

BOOKINGS ESSENTIAL

Ph: 0421 317 174

E: Tania@shalomhealth.com.au

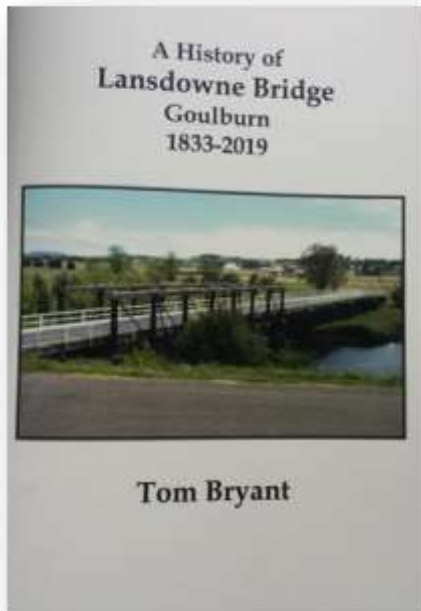
Shalomhealth.com.au



Hello Everyone,

We have a new and exciting publication by Tom Bryant to tell you about.

A History of Lansdowne Bridge 1833-2019.



The new bridge is all most complete and will be a great welcome back by the Windellama public.

Tom has produced a comprehensive history of the bridge which you will enjoy reading.

We have copies available at the museum at a cost of \$10 each.

Windellama History is preserved in our wonderful museum, with lots to look at and lots to talk about, so come and visit

at the next Market Day.

We have a very good selection of Windellama history books by local Authors Tom Bryant & Rex Hockey, for sale as well as the ever popular

“Wild Windellama” by Carina Clarke.

Our museum is open on **Market Days** - every third Sunday of each month, from 9am till 1pm and by arrangement.

**Next Meeting will be on Saturday 10th August 2019 10am
at the Museum**

NEW MEMBERS and GUESTS ARE ALWAYS WELCOME
For any enquiries please contact: Rex Hockey: 48 445147

Marcia Tatam: 0423283514
Julian Woods: 48 44 5270

Rainfall Stats



16 April to 15 May

Rosewood, Windellama Road Windellama 46 mls / 3 days

Gar-Den, Oallen Ford Rd, Oallen 49.5 mls / 5 days

Corang Cottage, Braidwood Road
Nerriga 9 mls / 7 days

RFH AUTO REMOVALS *All Areas*

**CARS • TRUCKS
MACHINERY • ETC..
• REMOVED FREE**

CALL RON ANYTIME!

0411 115 977



First Sunday of each Month

Nerriga Hall

10am to 2pm



NERRIGA HOTEL



Pub opens at 10am, 7 days.

Meals – Kitchen open for lunch (12-3pm), 7 days
& dinner (6-8pm) Fri, Sat and Sun

Coffee shop – Open Friday & Monday (6-11am)
Saturday & Sunday (7-11am)

Accommodation – self-contained cabins available

Live music – on the last Sunday of every month in the afternoon and every now and then on a Friday night. Check out our facebook page for details of upcoming gigs.

Functions – We can cater for special events, give us a call to discuss.

Beer garden **Open fires** in winter **Take away** alcohol available

6124 Nerriga Road, Nerriga NSW 2622 nerrigahotel@hotmail.com
Ph 02 4845 9120 www.nerrigahotel.com

Like us on
Facebook

Nerriga Garden Club

It is amazing what a difference a year or so and a lot of hard work can create. We visited Lynley & Gary's home for our June meeting, and spent an hour or more ambling through their "tropical" tunnel. Last time we were there it was virtually empty. They have planted fruit and vegetables and all kinds of other plants. They have been enjoying the results of their hard work. With some trees bearing fruit even in their first year! We then gathered in the warmth of their home to enjoy a great lunch and several conversations. A great day!

We are currently working on where our next gathering will be, but the date will be Thursday, July 11, 2019 so mark it in your diary. Kay will send out the information when it is finalised. It might be a Christmas in July theme!

Enquiries: Kay Hamer on 4845 9021 or kahamer@activ8.net.au



Changes to Waste Management Centre Opening Hours

Changes to Waste Management Centre opening hours. From Monday 2 May 2016 Goulburn Mulwaree Council's Waste Centres will operate different hours.

Goulburn Waste Management Centre open 7 days per week from 8am to 4pm.

Marulan Waste Management Centre to be open from 8am to 4pm on Saturday and Sunday, plus 8am to 12noon on Friday and Monday.

Tarago Waste Management Centre to be open from 8am to 4pm on Saturday, Sunday and Monday.

All Waste Management Centres will be closed on public holidays and from 12 noon on Christmas Eve.

Marulan and Tarago Waste Management Centres will also be closed from 12noon to 12.30pm on opening days to enable the operator a dedicated lunch break.



A1

**SEPTIC TANK
&
GREASE TRAP
CLEANING SERVICES**

0408 483 943

Bob Baird Goulburn

PH: 4822 3290

7 DAYS—SERVICING ALL AREAS

BUSINESS REQUISITES *Sales & Service*

- Photo Copiers
- Fax Machine
- Cash Registers
- Computers
- Stationery
- Consumables

Ph: **4821 5109**

E: bus_req@ozemail.com.au

10 Russell Lane, Goulburn

Printer of your Windellama News

Windellama Public School News

Email: windellama-p.school@det.nsw.edu.au

Phone: 4844 5130

Website: www.windellama-p.schools.nsw.edu.au

Fax: 4844 5265

TREC SCIENCE AND SPACE DAY

All the students travelled by bus over to Tarago, along with all the other TREC schools to be captivated by the planetarium which engaged, amazed and inspired all. All the students went on a space adventure.

The Planetarium



RECONCILIATION WEEK

In K - 2 we learnt about Aboriginal Dreaming Stories and created our own sea turtle artwork.



YEAR 6 JACKETS

Our year 6 students, Mardi, Victoria, Tyler, Tobie and William, were presented at assembly, their own year 6 jacket. They all look great.



BUNNINGS BBQ SUNDAY 30 JUNE



Our P & C Association will be conducting their next fundraiser, being the Bunnings BBQ. If you're in the area please drop in and have a sausage sandwich.

WHAT'S COMING UP?

Next P & C Meeting at 6pm
TREC CAPA Day
District Athletics Carnival

1st July
4th July
9th August



Countrywide Shower Screens



Shower Screens

• Frameless • Semi-framed • Framed

Mirrors

• Bevelled • Polished

Mick Greenwood
0448 494 220

Fax: (02) 4849 4220

E: countrywideshowerscreens@bigpond.com

Free Measure and Quote

Lowline Cattle

A small beefy, Angus derived breed – quite & easy to handle.

Why Lowlines?

MORE BEEF TO THE HECTARE

- ✓ smaller size means easier handling ✓ higher stocking rates
- ✓ low birth-weights ✓ early maturity ✓ compact bodies
- ✓ excellent feed efficiency ✓ less stress on fencing ✓ less soil compaction



Great for first time cattle owners of any age and gender

Windellama Downs

*Producing quality, Australian breed cattle & sheep
suitable for any size rural holding*

Stock for sale

Commercial or registered stud stock

Mob: 0416 047 488 Ph: 4844 5175

Email: windellamadowns@iinet.net.au

yarralaw springs wines

Goulburn & Southern Tablelands Newest Winery
Cellar Door Upcoming Open Days

Hours – 11am to 4:00 pm

Sunday 7th July

Sunday 14th July

Sunday 21st July

~check website for any changes or

call prior for a drop in visit or purchase anytime ~
25 kms down Windellama Road from Goulburn
turn left into Muffets Road

email: admin@yarralawsprings.com.au

web: www.yarralawsprings.com.au



Industrial • Commercial • Rural • Domestic
Ph 4844 7088 INSTALLATIONS 0418 234 289

ALLARD

ELECTRICAL CONTRACTING SERVICES

SOLAR UTILITIES & ENERGY SERVICES

GAS-OIL COMBUSTION SERVICES

stevenallard@bigpond.com

ELECTRICAL LICENCES:

NSW Lic.No 198855C

NSW Lic.No 498875S

ACT Lic.No 2009576

QLD Lic.No C13290

ACCREDITATIONS

ACT Type (B) Gas Appliance #200732

NSW O.H.&S. General Induction #03655



CALLING ALL WINDELLAMA PROPERTY OWNERS AND MANAGERS.

Windellama Landcare is proposing to run a series of tests, discussions and workshops on the structure and nature of Windellama area soils, what landowners can do with their soils and appropriate management techniques. While we know there are a number of problems with Windellama soils we would like to know what you want to know and the problems and issues you would like expert advice on. Please contact Henry Detjen (henrydetjen@bigpond.com) or Tony Greville

(grevilles@activ8.net.au)

EVENTS AT THE END OF MAY –

Last month Windellama Landcare members went to a couple of very interesting all-day events.

Cultural Connections

On the 29 May a couple of members attended the Cultural Connections day held at Camp Wombaroo, near Bowral. The speaker was David Kelly, whose mother was taken from her family when she was eight years old but she kept her memories of her country – near Katoomba in the Blue Mountains. She told her son stories of her childhood in the area around the The Gully, known as Garguree by the traditional owners, the Gundungurra and Darug peoples.

David spoke of his “journey” discovering his indigenous past and his association with the Landcare movement – all coming together in the restoration of his mother’s special gully and bringing back the sweet water...

In the late 1940s the traditional owners’ lives were disrupted when the land was turned into a tourist park and they were made to leave. Later still, in the late 1950s, it was cleared for a car racing track, which operated until the 1970s. The restoration work began about 2011 and with grant funding, support from the local council and help from the volunteers of the Garguree Swampcare group, the work began – weeding, planting and bush regeneration to restore The Gully to its previous state – with its sweet water. Garguree, The Gully, was declared a Place of Aboriginal Significance in 2002.

David brought many props to illustrate his story, and showed

a short film of the beautiful area of The Gully after the work was completed. David has been honoured for his work and is also involved with school groups and with other educational activities. It was a very enlightening day.

Good news climate change stories - Landscape Resilience Forum

Then the next day we went to the Landscape Resilience Forum -- stories from locals who are building landscape resilience to climate change – held at the Mulloon Institute near Braidwood. Mandy reports:

Three members of Windellama Landcare got to attend a ‘Landscape Resilience Forum’ on 30th May, jointly organised by Upper Shoalhaven Landcare and The Mulloon Institute. It was held at Mulloon Creek Natural Farms. Over 100 people attended the event. The Mulloon Barn was packed. We felt lucky to get tickets. Sadly, many missed out.

It was very cold; however, it wasn’t the weather that kept us on our toes that day, but the string of inspiring speakers. So many had positive stories about regenerative farming (which aims to reverse damage to the land by increasing biodiversity, reducing chemical inputs and restoring carbon to the soil) and how it was helping them cope with the effects of climate change on their properties. Here’s a sample of some of the stories we heard.....

Agro-Ecosystem Accountant, Sue Ogilvy, reported on her study of graziers with at least 30% of protected woodland on their property. She found they not only had healthy natural systems but were just as profitable as conventional farmers (due to lower input costs and their farms coping

(Continued on page 21)

Nirvalley Homestead NURSERY



629 Cullulla Rd, Tarago

PH 4849 4481



E. nirvalley@optusnet.com.au

M 0419 257 663



All suitable for local conditions

- Big range of natives and shrubs
- Conifers, Hedging, Windbreak
 - Paddock & Feature trees
- Advanced Trees • Tube stock
 - Fruit Trees, Nuts & Berries

See our FACEBOOK page for
lots of pics and specials

Bare root **Fruit Trees**

Over 100 varieties of
fruit trees, nuts, berries, citrus

**+ ROSES and
ORNAMENTALS**

CAMELLIAS are in
flower and looking great
+ evergreen MAGNOLIAS

Windbreak & Shelter Trees
Leylandiis, Photinias & more

Talk to us about **LANDSCAPING**
Garden Design & Maintenance
and **IRRIGATION SYSTEMS**



TARAGO PRE-SCHOOL

Ph. 4849 4427

tarago.preschool@gmail.com



Open 5 days a week

Monday - Friday

Children 18 months - 6 years

Standard Rate - \$25/day

Casual and Half days available

Subsidised rates on application



Along with an Early Childhood Teacher our
staff are Diploma & Cert III qualified



better with variable conditions) and significantly, they had increased personal well-being. Inspiring Boorowa grazier David Marsh (2018 Landcarer of the year) has increased his tree cover from 3 to 20% over 20 years. He started with 26 stock paddocks and now has 105, many thick with native summer-growing perennial grasses. He's vigilant about matching his stock numbers to the amount of grass available. In 9 years of low rainfall he's maintained his soil cover and hasn't had to resort to feeding his cattle at all.

Since 2007 Gillian Sandbrook in Holbrook has planted 60,000 trees on her land. Her mantra is 'groundcover (not just perennial grasses but also decaying litter) is absolutely everything'. Like David Marsh, Gill's embraced holistic grazing with its planned rotational grazing. She has increased her paddocks from 23-65 and moves her stock every 1-3 days ensuring long recovery times to grazed paddocks. She's also been working with Peter Andrews (see below) to increase the water holding capacity of her land.

Sheep farmer David Watson at Bungendore has planted 15 kilometres of windbreaks and woodlots, and enhanced wildlife corridors on his farm.

Martin Royds, a fifth generation Braidwood beef cattle farmer, continues to innovate and trial new practices on his farm. He'll give new ideas a go so long as they build carbon in his soils, regenerate the land and work alongside, rather than against, nature.

There were other great presenters too, (like Noel Webster, Aboriginal Community Support Officer from South East Local Land Services talking about Traditional 'cool burning' to regenerate our natural areas) but the last speaker was the inspiring Peter Andrews, the 'architect' of Natural Sequence Farming. Peter's mission is to heal the land, particularly its waterways so they retain water and release it slowly, rather than acting as giant drains. He shared his talk with Peter Hazell who co-ordinates the Mulloon Community Landscape Rehydration Project, an exciting project now involving many of the property owners along Mulloon Creek in restoring the creek.

We felt very enriched by all the knowledge generously shared throughout the day. Climate change is impacting us all, but if we can build a resilient landscape using the strategies we heard about at the forum, our land will be able to better withstand the prolonged dry periods and higher temperatures we are getting these days. And when it does finally rain good groundcovers, well aerated and carbon-rich soil will ensure we get full value from any rain that falls.

Mandy Wilson, Windellama Landcare member

And then there was the working bee at the Landcare HQ – John reports:

Successful clean up at the Windellama Landcare Shed

It was a busy day at the Landcare shed on Saturday 15 June and one truck load of unwanted stuff was sent to the tip. Some valuable documents were located – a great find for our historians and original members of the Windellama Landcare Group, Shirley and Merv Cornish, who will find them invaluable for their research when compiling the history of the Group. All the rest of the material was reorganised and stored and the shed swept out. Irene provided great tucker for all as usual. A jolly time was had by all.

UPCOMING EVENTS

Later in the year – in September – Windellama Landcare is being joined by Willoughby Bushcare Group members from Sydney, to help with some tree planting. The dates for this busy bee are the weekend of the 22-23 September.

WILD WINDELLAMA

The publication that should be on the shelves of every Windellama home!

These two books are a collection of Carina Clarke's articles which were published in Windellama news over a number of years. The articles, accompanied by Carina's beautiful black and white drawings of the plants, birds and animals of Windellama, are entertaining as well as informative.

(Continued on page 23)

CHAMELEON NETWORKS
 Network Technical Specialist

COREY WISEMAN
 Domestic & Commercial

Ph:0248445000
 Mob:0428727409

email:chameleonsolar@gmail.com

BRCA Lic.No.B21976NSWopen ABN 34470452190

Proudly Supporting the Windellama & Surrounding Communities.

We strive to find dynamic solutions in an ever changing customer environment to enhance your life style. Over 32 years of Experience in Industry

- Networking Solutions • Customer Internal wiring • Install & Maintenance
- VoIP solutions to suit your carrier • Wi-Fi • IT computing solutions
- Web: <http://chameleon-networks.business.site/>

Heard of Wiltipoll Sheep?

The Wiltipoll is a hardy, prime lamb, wool shedding breed developed in Australia



- ✓ Full wool shedding – no costs of shearing
- ✓ Fly lice & grass seed resistant
- ✓ No jetting dipping or mulesing
- ✓ Stays in allocated paddock
- ✓ Superior quality meat sheep
- ✓ Ideal for organic lamb production - consistent multiple births

Windellama Downs



Stock for Sale

Commercial or Registered Stud Stock

Mob: 0416 047 488 Ph: 4844 5175

Email: windellamadowns@iinet.net.au



Thinking of selling your property?

Contact Graeme Welsh Real Estate to find out what your property is worth in todays market



4822 5737



www.welshre.com.au



welshre@bigpond.com

Supporting the Windellama Community since 1997

(Continued from page 21)

Each of the two volumes has an index so it's easy to look up any local flower, shrub or bird and read something about it. Wild Windellama is \$15 for the set of two volumes.

PLANTING EQUIPMENT FOR HIRE FROM WINDELLAMA LANDCARE

Windellama Landcare has a direct seeder and other equipment for hire.

If you are interested please contact the President, Henry Detjen, on 02 4844 5030 or 0408 601 016.



While the shed is open on Wednesday and Saturday from 10AM to about 2PM, the Committee has also been working hard at other times to obtain the final occupancy certificate. This requires the recreation/meeting room and parking to be completed. We are also working towards getting a solar array on the roof and a patio/pergola on the northern side of the Shed. Organisation and layout of the workshop is a

priority. Thanks to the many businesses and locals who have supported the Shed in various ways.

Luigi (Lou) Alaimo

Continuing with our members interests' theme our President is Luigi (Lou) Alaimo.

Apart from a military career, teaching, riding his Honda Shadow motor bike, enjoying the great outdoors, caravan, kayak, top end tour leader, planning a Cameron Corner expedition, getting lost bird watching, being eyed off by a croc, Tarago show, Men's Shed, Lou leads a not so passive life!!

Lou was born in 1949 in Melbourne. His family ran a suburban fruit shop where he learnt to serve customers and count in £sd. Lou met his partner Marie at a Young Christian Workers club on the eve of his 18th birthday. After a couple of years in the Victorian Education Department he thought a teaching career needed a BA from Latrobe University. However, life provided another option in the form of National Service in 1969 and marriage in 1970. 24 years of military service saw him rise from Sapper to Captain with roles involving recruiting counsellor, soldier career administration and IT systems management at HQ Army Office in Canberra. Postings included two tours of Malaysia with a young family and a year completing a graduate diploma in IT. These years also involved; kids' soccer and cricket coaching and the school P&C. Sports include lacrosse and cricket from age 12 and long distance running leading to several marathons in the 80s.

After his service career, plan "A" called, ie teaching. Spending 15 years with the Canberra Institute of Technology in vocational training of business administration and IT. In 1998 Canberra became "too suburban" so home is 'Willandra' 8 kms south of Tarago. On moving to Tarago, Lou quickly became involved in the community assisting to establish the Tarago and District Progress Association and spending time with the Taylor's Creek RFS. After 13 years as the Show Society Secretary he is now a life member. 2016 saw him involved in the genesis of the Tarago Men's Shed, being its Secretary during 2017/18 and is now working to advance the Shed's success as President.

Lou is always keen; as a bushwalker in the great Australian mountains, deserts and plains, sailing on tall ships as paying crew and most recently photographing our great and varied bird life (anyone want to join him?). Following a successful, ie returned safely, 5 weeks tour to Cape York last year, Lou is now seeking Shed members to share a two-week 4WD camping trip to Cameron Corner and beyond during mid-September. In addition to Lou's broad personal interests, he is an excellent shed President and an active member of the Tarago community.

Shed Visits. 11 members visited the Moss Vale Men's Shed on 11th June with an excellent personal tour of the Bradman Museum followed by lunch at the café. Members were most



(Continued on page 25)

Keep warm this winter

Goulburn **Sand & Soil**

For all your firewood needs

TRAIDING HOURS:

MONDAY - FRIDAY 7AM-5PM

SATURDAY 7AM- 4PM

SUNDAY 9AM-1PM

Courtesy trailers & delivery available



Crn of Braidwood & Bungonia
Rd, Goulburn NSW 2580
Phone: 02) 4821 8244



www.divalls.com.au



Rose and fruit trees can be planted, and also deciduous flowering trees such as prunus, flowering cherry, crab apple, flowering peaches, lilac, laburnum vossi (golden chain tree) and pink and red hawthorn. Also larger deciduous trees such as liquidambar, box elder, elms, claret and golden ash, silver birch.

Weeping trees such as cherry, crab apple, elm, mulberry, Japanese maples.

Rose and fruit trees pruning start this month.

VEGETABLES;

Sow broad beans, peas and all varieties of onions, rhubarb, strawberries and asparagus crowns. Also lift and divide rhubarb replant into soil which compost and old manure has been added. Tidy up strawberry patch remove old leaves and replant new runners, strawberry like a acid soil do not add lime.

FLOWERS

Seedlings for sowing; Stock, viola, primula, wallflower, russel lupins, delphiniums, foxglove, poppies, sweet Williams, calendula, alyssum, snapdragons, verbena, diathus.

Sow seeds direct into the soil for Virginian stock, which makes a lovely border.

Things to do now;

Cover your lemon trees with plastic or shade cloth when below-zero temperatures are forecast. Do not feed citrus at this time of year, it will give you new growth which can be hit by the frost.

Feed growing bulbs every two weeks with a liquid fertilizer that is high in potassium.

Spread compost or well-aged manure around the roots of azaleas and rhododendrons, then water deeply in preparation for flowering.

Apply liquid seaweed to your plants regular to strengthen them and help them handle the cold weather.

(Continued from page 23)

interested in how a long-established shed has managed its health and safety programs, laid out the tools and equipment and installed its dust extraction system.

Donations. Thanks to Guy Flissinger and staff at Atlas Mechanical Services for donating and installing the reverse cycle aircon/heating unit. Also thanks to Anthony Reynolds of Lake Bathurst and Goulburn Produce for donations of timber. The fuel stove/heater sought in the last Tarago Times also arrived during the month, alas without a flue. If you happen to have a few lengths of flue, up to 5m, "standing" around, please let us know. Still looking for any fibreglass or other wall/ceiling insulation. We have a good home for it.

A view of a day at our Shed: We have our Australian Men's Shed Association (AMSA) flag flying out front - THE SHED IS OPEN! Men from the District arrive. The recreation room provides a welcoming place for men; be they; members, new to the area, out of work or those whose social outlets are limited. (Once we have our sunny north facing patio we may choose to gather in the sun at a long table with chairs). Greetings are exchanged, typically in a rural area: "How much rain did you get?", "Did you get your stock to the sale yards...? There may be discussion about the Shed and personal projects planned or underway or about a recent trip. Some will move to the workshop area to resume projects while others are happy to sit with a coffee and continue chatting. From time to time there might be quiet conversation between member friends, in some cases for advice or just a listening ear. On some days members play cards. On occasions there will be a BBQ lunch. Good for the body and the soul.

See you at the shed or you can contact the Secretary, Owen Manley on 0409 041 783 or taragodistrictmensshed@gmail.com





MICK'S MULTI TRADES

ABN: 90 178 544 738

Multi Skilled Tradesman

Windellama NSW

Lic # MVTC 126573

Mob: 0413 059 587

Email: micksmultitrades@gmail.com

Proudly supporting the Windellama community is Mick

A multi skilled tradesman and handy man.

So if you've got a problem, we can help you sort it out.

We can help you with building a shed too renovating your home,

Fitting a water tank or swinging a farm gate.

We looked after our locals, and turn a hand to any job.

**So shoot me an email or phone anytime, you'll be pleasantly surprised at our
down to earth rates.**



CJ Solar

"Quality Systems that last"



**Home, Business or Community
Organisations**

**Custom Designed To
Meet Your Energy Needs**

- ◆ Stand Alone Systems
- ◆ OnGrid With Battery Backup
- ◆ Grid Connect
- ◆ Clean Energy Council Accredited

Ph: 4849 4225

www.cjsolar.com.au

PREVIOUSLY TRADING AS SUN POWER

LICENSED ELECTRICAL CONTRACTORS (241654C)

The June meeting of our garden club commenced in Sue's delightfully warm home with a shared cuppa and nibbles before venturing outside for a very enlightening commentary of her garden. Sue's garden consists of a very large and totally enclosed 'L' shaped orchard which houses numerous varieties of fruit trees and some berry plants along the fence line. Her chickens have full rein in this area and while keeping the bugs at bay they also fertilise the area and provide copious amounts of eggs. There is also a flower garden with its principle purpose being to attract and feed the numerous varieties of bees, including the blue banded bee which by all accounts is quite rare.

As was mentioned at our last meeting, Sue has a wonderful system of wicking beds in her veggie patch. There are currently nine wicking beds with another three planned. These are an impressive sight, all enclosed with chicken wire and covered with shade cloth. She likes them to be three planks of timber high for ease of access and about 1.5W x 2.1L x .9H metres in dimension.



Wicking beds are mostly constructed above ground and are lined with a plastic liner to keep water inside the bed. This lined bed is then partly filled with a layer of small pebbles (road base has been known to cause tares in the liner). At this point an ag-pipe is feed from the proposed level of the soil in and onto this layer with a small outlet fed through the wall at a slightly higher level than the lowest level of the pipe to allow for overflow. This is topped up with shade cloth then a good quality soil to just below the top of the pipe. Sue finds this system saves a lot of water which is a limited commodity on a bush block. Planting a bio-fumigant such as mustard greens,

when turned into her soil, has markedly improved Sue's veggie production ten fold. Currently quite a few beds are being rested and improved for the next planting.

Sue and her husband Brett are very keen to continue to build and improve the garden with a green house in partial construction and due for completion in the near future. I must add here that most of the construction of the garden is made from recycled materials found, given and collected over time. It is quite inspirational. Sue's enthusiasm for her garden is quite intoxicating with members coming away feeling inspired to do better in their own gardens.

All gardeners commented about the recent rains making a wonderful difference to their gardens. Warren brought in some bamboo garden stakes for anyone interested, while Carolyn brought a few bags of delicious figs to share. She said that her fig trees had produced so well that she is all 'figged out' now after having made jams, drying and baking them, given a lot away, etc. She adds dolomite each year. Figs are susceptible to a certain wasp which might explain why Warren has had failed attempts to grow any fruit on his trees. Irene's veggies have been good and she has planted broad beans, peas and cabbage seedlings as her winter crop. Maria is now importing soil due to infestations of fungus so is very interested in Sue's bio-fumigant remedy. She is also interested to learn how to graft and grow different fruit trees onto one root stock.

Disappointingly Judy is still having trouble with the kangaroos eating her roses and other flowering plants close to the house.

The next meeting will be held at the Canberra Arboretum on 2nd July. Any prospective new members are very welcome to join us and should ring Judy or Warren on 0248445350 or 0438605821 for details. As usual all attendees might like to bring a plate of food to share.

Classified Advertisements

All personal classifieds are FREE & also included in the Tarago Times
We run your advert until you let us know when you have sold it or gained it

GENERAL FOR SALE

Electric/Folding Bike, "Smartmotion Vista" 250w, 36v10.4ah Lithium Battery, 90cmLx62cmHx43cmW folded, as new, never used, contact Neil, 0400405866

Folding double bed good condition \$30.00 or near offer. Phone Shirley 48445287 evenings.

Water Tanks 1000 Litre ICB B Grade(not for drinking water) \$60 each Phone Bruce 0498232448

Bosch Induction Cook top 3 elements good condition \$200 0419445863

Vinidex 13 x 50mm x 4.0 m orange electrical conduit \$12.00 per length or \$145.00 the lot. Ph Bob 48445001 after 6.00pm .

Wooden T.V. Console in VGC. Size W=186cm, H=147cm, D=59cm. Contains a glass cabinet each side, 2 drawers, DVD & T.V. Area. \$250.00 or O.N.A. Details 48447061.

High grade quality woollen yarn rugs cream and deep red both matching in great condition small 150 x 239 large rug 250 x 350. \$400 ono. Call Elisha 0403542471

Teak entertainment unit, with two glass door display. 6x4 foot. \$75.00 ONO.

Double bunks, Metal, with ladder, new innerspring mattresses. \$125 ONO

Two wooden bed side tables with cane draws.\$50 for two. Ph. 4849 4480

1 x **King Single bed** \$200; 1 x **Single bed** \$150; 1 x **Single bed** \$100; **Dressing table/ chest of drawers** (8) \$150; 1 x **Glass TV table** \$150; 1 x **Glass coffee table** \$50 Ph 0411 421 416

Lounges - 1x3, 1x2 + ottoman - yellow fabric, Matching chair in navy blue. All GC. Offers over \$500 considered. 4849 4222

Desk - large timber , 2xdraws/storage under. Leather inlay + matching 2drawers file cab. Ergo office chair. All VGC. \$400 ONO 4849 4222

Firewood. 2 tonne truck load \$430, ½ truck load \$250. Ph 0401 241 646

ANIMAL RELATED FOR SALE

Orders taken now for supply of **nucleus bee hives** for spring /summer 2019 4844 5001

Collapsible wire crates 2 medium \$50ea 1large \$70. 2 wooden export crates fox terrier size \$40ea. 2 vinyl crates— as new \$100ea (cost \$250). Medium size whelping box (electric)\$150. Clean double blankets \$40ea. Call 4844 7143 ask for Margaret

Budgie breeding cages \$50 ono. 48459147
Parrot Cage on stand, good cond. \$150 ONO. Ph 0429 006 745

Saddles, good condition, \$350 & \$200. ONO. Riding helmets \$30 and \$20. Also other gear: bridles, leather straps, etc. Ph 0434 286311.

Miniature Shetland Gig well balanced, hardly used, some harness, pneumatic tyres, lightweight \$730 ono Ph 62301774 or 0417749064

ANIMALS FOR SALE

Adult ducks for sale. Peking x breed. In laying season at present. \$10 each. Ph 48459147 after 7pm or 0405499186

2 black plump good looking Australorp Roosters to give away.48447061

Boar Goats for sale Male and females \$120 each Contact Frank on 0418282931

Muscovy Ducklings & 4 Mothers 4844 5108

Murray Greys 2 Bulls—make an offer. 0414616960

Lowline Bull approx 18 months old \$2000 o.n.o 02 48459147

Part Arabian horse 4 years old , 13hh chestnut gelding. \$1,500 ph 0421996795

Alpacas - lots of different colours & ages. From \$250 each Phone Jacki 0428 298 157

Horse part Arabian, 3 yrs old, regd, 14.2 hh, chestnut mare. \$3,000 Ph 0429 461 490

Alpaca Wethers Variety of Colours, ages 12 months – 3 years.Halter Trained Wethered, Needled & Shorn. \$400.00 each. Phone 4844 7267. Faye & Keith. Quialigo.

AGISTMENT

Horse Agistment available at 41 Burrabinga Road Tarago. Please phone 0429 461 490 for enquires

CARS, BIKES, TRAILERS, etc. FOR SALE

Nissan Pathfinder, very good condition, new tyres - excellent vehicle to drive and well maintained - V6, 250,000 Ks, Recent full

CHURCH INFO

Catholic Church Services

Parish Priest: Fr. Dermot McDermott

Assistant: Fr. Assin

Deacon: Chris Van Gessel

Presbytery & Parish Office
Phone 4821 1022

Sunday Mass will be at 8am on the 2nd & 4th
Sunday at St. Patrick's **Marulan**.

Mass Times in **Goulburn** are:

Saturday Vigil Mass:

6pm at St. Peter & St. Paul's

Sunday: 7am. at Our Lady of Fatima,
Nth. Goulburn

Sunday: 10am. at St. Peter & St. Paul's

St. Joseph's Church, **Tarago**

Mass: 3rd. Sunday 8 am

St. Michael's, **Bungonia**

Rosary: 7 pm. Thursdays

Enquiries: 4821 1022

Fees for Hire of Hall or Supper Room at Windellama Hall

*HALL	ALL DAY	\$200
	DAY 4hrs or less	\$100
	EVENING/NIGHT**	\$200

*Includes Supper Room & Kitchen

** \$2 per hour for heating

SUPPER ROOM (Includes Kitchen)

ALL DAY	\$80
DAY 4hrs or less	\$40
EVENING/ NIGHT	\$100

Use of the premises prior to your booked
function will incur a surcharge of
Supper Room Fee

**To Book please ring W. P. A. Secretary,
Leanne Lourigan on 4844 5545**



CHURCH SERVICES

St Bartholomew's Windellama

Services for May

28th

July at 10.30 am

Reverend Canon Peter Bertram

St. Andrews (Anglican) - Tarago

2nd Sunday 9am

St. John's - Lake Bathurst

4th Sunday 9am

NERRIGA

ANGLICAN CHURCH SERVICES

Held at Nerriga Church

2nd Sunday each month at 2pm

(Except Easter & Christmas)

All Welcome

Classified Advertisements cont

airconditioner service - Compliance plate late 1999, \$6,000. Phone 48459147.

20 inch 7 spoke mag wheels in great condition near new tyres 95% tread on them. Ideal for Commodores. \$800 ONO call Richard on 0403542471

Camper Trailer Queen sized bed with large room. Plenty storage room. Comes with zipon canopy/shelter. Easy to erect/store/transport. \$3500 ono Ph 62301774 or 0417749064

RURAL RELATED FOR SALE

5ft SLASHER (unknown brand) , 3pt linkage, good condition, \$800, contact Neil, 0400405866

Seed Spreader. As new \$1000 o.n.o. Post hole Driller. As new \$600 o.n.o Quad Bike for Sale - recent fully Serviced - \$2000 o.n.o. Tri Motor Bike with attached Trailer. great for using around stables . Not registered for road use. \$2000 o.n.o. Water pump for sale. Never been used. \$1000 ono. 48459147 after 7pm or 0405499186

Free standing drill press single phase power and adjustable speed. Comes with vice \$300 ono call Richard 0403542471

Lucerne Hay Prime soft green small bales \$15 8 x 3 x 3 bakes of lucerne or beardless wheaten available phone 0428493194

Stanbury Electrical 75 amp battery charger - new condition, used twice only for Solar batteries - \$1200. Pho 48459147 after 6P.M.

Sherwood hydraulic log splitter 3 point linkage, horizontal and vertical operation. \$3,500 ONO Ring Grahame 0403499068

WANTED

Holden one Tonner HQ to HZ. Any condition running or not Ph Garry 48445980

Small Quad Bike for kids phone Garry 48445980

Australian Silky Terrier Female Pup (will pick up) phone Sharon 48445980 0438879355

Info on star picket straightening service. Call Margaret 0459142230 / 48445566

Horse agistment for mini mare from November to May to avoid coastal itch. Please call Tanya 4456 5589

SERVICES

Belinda's pet minding

Why stress your pets out by putting them in Kennels or boarding and saving on having to get them vaccinated to put them in boarding.

I will come to you . Leaving your animals in their own homes. I have Vet Nurse experience of

10yrs .

I have a miniature pony stud and also breed and show guinea pigs. I will feed Horses , Dogs, Cats, Goats, Sheep, Chickens Ducks,. Medicate animals daily if needed .

Servicing Windellama , Bungonia, Quialigo and Goulburn.

Contact Belinda on 48447168 or 0490814131

CLEANING

Needing a house cleaner? I clean homes weekly, fortnightly or monthly. Will service Windellama, Quialago, Bungonia area. I am currently the school cleaner for Windellama Public School, which I have been cleaning for the past 6 years. Contact Belinda 4844 7168, or mobile 0490814131

LAND FOR SALE

35.5 acres bush block, 3 bedroom house, out buildings, Creek and dam, Oallen Ford Rd Windellama. Please call 0427 5560 69

Our Advertising Charges

Classifieds - Personal (maximum 2 lines)	FREE	
	Month	Year11 issues)
Small advertisement (business card size)	\$ 6.50	\$ 65.00
Quarter page advertisement	\$12.00	\$120.00
Half page advertisement	\$25.00	\$250.00
Full page advertisement	\$50.00	\$500.00
Double page discount		\$90.00

Inserts - \$40.00 for 400 inserts into hard copies

Typesetting of adverts: \$50

PAYMENT:

Cheques: payable to Windellama News

PO Box 705, Goulburn. 2580

Direct Deposit or EFT: IMB Ltd; BSB 641.800; A/c 200045794 with Name & advert as detail

*** Unpaid adverts will be cancelled after one month**

*** All advertising copy must be accompanied with payment**

All advertising enquiries to

Ray Plant 4844 5156

COMMUNITY INFORMATION

Windellama Progress Association

Michael Still (President) 0413 059 587
Leanne Lourigan (Secretary) 4844 5545

Windellama Rural Fire Brigade

Paul Alessi (Captain) 4844 5149
Rex Hockey (President) 4844 5147
Peter Pokorny (Secretary) 4844 5759

Windellama News

Ray Plant (Secretary/Treasurer) 4844 5156
Gayle Stanton (Editor) 4844 5156

Windellama Garden Cub Inc.

Harry Simm (President/Secretary) 4844 7061
Sharon King (Treasurer) 4844 5980

Windellama Hall Country Markets

Lloyd Turner 4844 5214

Windellama Historical Society

Rex Hockey (President) 4844 5147
Julian Woods (Secretary) 4844 5270

Windellama Landcare

Tony Greville (President) 0418412460
Sandra Greville (Secretary) 0418412460

Windellama CFR

Kevin Muffet 4844 7143

Windellama School P&C

Ian O'donnell 4844 5927

Willow Glen Gardeners

Warren Yates 4844 5350

Wires (wildlife rescue)

Southern Tablelands WIRES 1300 094737

Justice of the Peace

Linda Shannon 0490041167
Geoff Burns 4849 4330
Leanne Lourigan 0427201469
Suzanne Robens 0490774981

Southern Tablelands Athletics Club (STAC)

Gill Shepherd 0419639254

Nerriga PSA

Helen Rolland (President) 4845 9115

FOR ALL EMERGENCIES eg. FIRES / ACCIDENTS PHONE 000

For Mobile users & Landlines



Important Phone Numbers

Rural Fire Brigades



Windellama	Paul Alessi	4844 5149
Tarago	Warren Seymour	0419 665 393
Taylors Creek	Dave Elward	4849 4240
Mt Fairy/Boro	Tony Hill	0412 128 755
Bungonia	Terry Lewis	0408 223 380
Gundary	Tony Kent	0437298200
Nerriga	John Rolfe	4845 9160
Bushfire Information	1800 NSW RFS or 1800 679 737	

www.windellamarfs.com.au or www.rfs.nsw.gov.au

WINDELLAMA PH: 4844 5359 or CHANNEL 21



AMBULANCE

000

Ambulance Booking	13 12 33
Goulburn Ambo Station	4827 0444

Windellama SES

132 500

Kevin Muffet	4844 7143
Poison Info. Service	13 11 26
Goulburn Base Hospital	4827 3111

Police

Tarago Station -	
Snr. Constable Gary Handseker	4849 4411
Goulburn	4824 0799

Other

Goulburn Railway Station	4828 5816
Train info & bookings	13 22 32
www.countrylink.info	
Country Energy - interruptions	13 20 80
Lifeline	13 11 14
Kids Helpline	1800 551 800

July 2019

Mon

Tue

Wed

Thu

Fri

Sat

Sun

1	2	3 Tarago & District Men's Shed 10 am-3 pm	4	5	6 Tarago & District Men's Shed 10 am-3 pm	7 Progress AGM Meeting at Hall 4pm
8 SES Meeting @1830	9	10 Tarago & District Men's Shed 10 am-3 pm	11	12	13 Tarago & District Men's Shed 10 am-3 pm	14
15 SES Meeting @1830	16	17 Tarago & District Men's Shed 10 am-3 pm	18	19	20 Tarago & District Men's Shed 10 am-3 pm	21 Markets @ Hall 9am-1pm
22	23 Craft	24 Tarago & District Men's Shed 10 am-3 pm	25	26	27 Tarago & District Men's Shed 10 am-3 pm Brigade Meeting and Training	28 Service at St Bartholomew 10.30am
29	30	31 Tarago & District Men's Shed 10 am-3 pm				