



Now is the time to plant your vegetables for the coming winter. Watch for snails after all the rain we had.



Vegetables to plant now:

Seeds or seedlings of cabbages, cauliflowers, broccoli and brussel sprouts. Make sure your garden has plenty of compost and old manure, and a light dressing of lime before planting. Seeds of carrots, parsnips, celery, kohlrabi, lettuce, parsley, radish and turnips.



Flowers:

Seedlings of pansies, viola, stocks, poppies and alyssums for winter show. Plants of calendula, carnations, polyanthus, larkspur, linaria, snapdragons, statice and verbenas. Look for spring bulbs in the shops now. Buy tulips early and place them in the fridge before planting. Dead-head roses and reduce the height of new wood, and the roses will bloom again in autumn. Give them a feed of complete fertiliser.

Apple and pear scab disease loves acidic conditions and strike first on leaf surfaces. The disease then moves onto the fruit. The way to

control this is by making leaf surfaces alkaline so these parasitic fungi can no longer thrive.

Lime Spray

1. Dissolve a handful of builders lime in 10 litres of water, mix well.
2. To remove lumps, pour the lime mixture through a filter such as shade cloth.
3. Spray the mix over foliage making sure you thoroughly cover the leaves.

Codling Moth Control Guide

In spring adults emerge, mate and lay eggs on leaves. Hang pheromone traps to reduce adult population. Band trunks and grow nectar rich flowers to attract predatory insects. In summer eggs hatch and grubs emerge to enter developing fruit. Expect 2-3 generations. Spray grubs with Dipel every 10 days; thin fruit (remove largest in cluster); cover fruit with exclusion bag; remove bands; kill cocoons; clean up infested fruit.

In autumn grubs emerge from fruit to pupate in cocoons; clean up infested fruit and windfalls; remove any traps that remain.

In winter grubs spend in cocoons in bark or crevices in the ground; use a steel brush to clean off loose bark from the trunk; squash cocoons; spray with white oil.

Pear and Cherry Slug

Pear and cherry slugs are really little grubs enclosed in black, slimy blobs. They graze on leaf surfaces, skeletonising them and weakening growth. Right now they are feeding furiously. Lime spray also controls this pest.

Plant of the Month

Narcissus – Daffodil, Jonquil

This genus all grow from autumn planted bulbs. All produce long flat or hollow leaves and single stem of flowers. Blooms of all species have six petals and central trumpet protecting the stamens. Native to the northern hemisphere, these popular bulbs have evolved to cope with very cold winters and are often short-lived where winters are mild. Some are perfumed, they come in colours from white, yellow and pink trumpets. Feed the bulbs after flowering and don't cut off the leaves, they feed the next year's growth. They can grow in pots, but after flowering place in the ground and feed.



JKM Excavations

- House sites • Tank sites • Dam desilting
- Road works • Bulk Earthworks • Trenching

Competitive Rates

0429 636 743 or A/H (02) 6238 0113

AARON'S MINI EXCAVATIONS

ABN 84197940351



4 in 1 Bucket
Postholes
Trenches
Levelling

Fits through 1 metre opening!!



Phone: **02 48411 862**

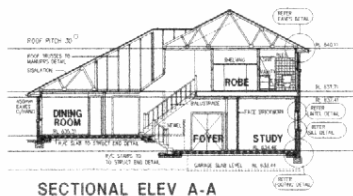
Fax: **02 48411 395**

Mobile: **0418 111 862**

ACOM DESIGN

PO Box 806,
Goulburn 2580

Yarralla,
Oallen Ford Rd
Bungonia 2580



SECTIONAL ELEV A-A

Robert C Everingham

Building Designer & Draftsman

New Homes, Alterations & Additions
Duplex, Villa, Townhouse Developments
Rural, Commercial, Industrial Buildings
Free Quotes - Competitive Rates - Prompt Service
Energy Efficient (SEDA), Eng Dwgs: Mech, Struct, HVAC

TEL 4844 4321

MOBILE 0417 682 022

FAX 4844 4323

EMAIL acomdesign@bigpond.com.au



MEMBER
STANDARDS AUSTRALIA



MEMBER
BUILDING
DESIGNERS
ASSOCIATION
OF NEW SOUTH WALES INCORP

D & J RIGOLI



**HANDYMAN SERVICES
&
PROPERTY MAINTENANCE**
ABN 43002820238

- * INTERIOR LINING
- * SMALL RENOVATIONS
- * SHED TO HOME CONVERSIONS
- * PERGOLAS * VERANDAHS
- * PAINTING * TILING * PAVING

And much more...
no job too big or small !

Will beat any reasonable quote

Mobile: **0419 492 799**

Ph: **48 445393** Fax: **48 445163**

www.djrigolihandymanagementservices.com.au

THE GOAT

Thank goodness I was there to answer the call,
Fell up the stairs, skinned my knee, had a fall,
'twas a stranger in chaos, in a state of distress,
Would I come, could I help get her out of this mess?

She'd been blessed by a friend with a cute little goat,
This hysterical lady was barely afloat.
She'd tried to phone a kind mutual friend,
But no answer resulted in me in the end.

This cute little nanny was growing real fast,
Prize roses, fresh veggies it's delighted repast.
New fencing, locked gates, barbed wire and netting,
Installed with great haste to reduce renewed fretting.

The goat had depleted the vegetable plot,
Ate the grape vine, the lilac, devoured the lot,
The new car was scratched, the duco in ruin,
Didn't know they could climb, she's considering sue-ing.

I knew I could help, the goat just needed loving,
Not fencing or wire or pushing and shoving.
Set out on my mission in my little car,
The lady's address wasn't really that far.

Was met at the gate by a very strange lady,
With a beautiful goat, all white, just a baby,
Tied to the post with some very strong chain,
Was 'goat' who was bleating in emotional pain.

Before I had stopped she opened my door,
Grabbed the chain, shoved the goat, couldn't stand anymore.
On the trip home, 'goat' ate the seat,
To steer, holding 'goat' was no mean feat.

By the time I got home I'd changed my impression.
I now knew for sure I was in for a session.
I now have no garden, no veggies, no flowers.
Repairs to the fencing took hours and hours.

Repairs are required by the clothes on the line,
Re-growth of my garden will take a long time,
Called out the sparky for chewed and frayed wires,
Being under the house, he said, could start fires.

I had no idea goats have a cast iron digestion,
Should have been warned, just a little suggestion.
The goat has to go, either it or my spouse,
This once was a peaceful attractive house.

I've just phoned a friend with a great big yard,
Taking care of a goat can't be really that hard.
With car keys in hand and a nice sturdy chain,
'goat' and I will get back in the car once again.

Marian Pearce.



Cannons to undergo facelift

The two iconic World War I cannons from the Rocky Hill War Memorial are undergoing an extensive restoration at the Ainsworth Engineering Group workshop.

The two 150mm Howitzers will undergo a great deal of work, including the stabilisation of their wooden wheels, strengthening of the chassis and repainting.

The works are on the recommendation of the Australian War Memorial. Managing Director of Ainsworth Engineering, Ken Ainsworth, is generously undertaking the restoration on behalf of Goulburn Mulwaree Council and Friends of the War Memorial Museum.

Mr. Ainsworth has extensive experience in this area, and has overseen several renovations on military equipment for the Australian War Memorial in Canberra.

Curator of the Goulburn War Memorial, Bob Saunders, said the cannons would again be displayed on Rocky Hill after renovations were complete.

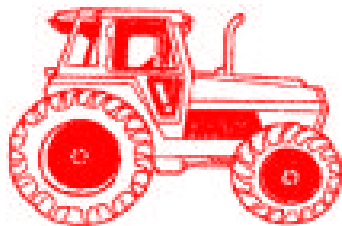
"These cannons are very rare, most having been melted down to make new cannons for World War II, and are a treasured feature of the museum exhibition on Rocky Hill," Mr. Saunders said. "They were at the stage of requiring a few sensitive repairs, and I would like to thank Mr. Ainsworth for generously assisting with this."

The two guns, which are outside the entrance to the tower, were captured during World War I and brought to Goulburn in 1920. For some time they were in Belmore Park looking over Auburn St, before being moved up to the War Memorial.



Ken Ainsworth and Goulburn War Memorial Curator Bob Saunders discuss the restoration work needed on a 150mm German Howitzer, which was captured by the AIF near Villiers Brittonneaux in August 1918.

**A.F. & M.R. DAVEY
TRACTOR &
MACHINERY REPAIRS**



"IF IN DOUBT, GIVE ARTHUR A SHOUT"

ARTHUR DAVEY

PH: 4822 8441

MOB: 0409 651 517

274 Mountain Ash Road, Goulburn

**GJ & AT CASSIDY
Farm Services**

For all your small farm needs including:

- * New Fences
- * Weed Spraying
- * Repairs to existing fences
- * Mustering
- * Stockyard design and erection
- * Stock Work
- * Lamb Marking

**Call Butch on
0438 818815
for a quote**

**F I F E ' S
S T O C K F E E D S**



Round Bales
Pasture Hay
Square 8x3x2
Lucerne Hay
Rye & Clover



Also suppliers of Bird Seed, Dog Food, Cat Food,
Wheaten Chaff, Oaten Chaff, Stud Mix

51-52 Knox St Goulburn

0 2 4 8 2 2 3 1 1 1

Church News

Catholic Church Services

Parish Priest: Fr. Tony Percy
Assistants: Fr. Damien Styles &
Fr. Francis Kolencherry

Contact 4821 1022

There are no regular Masses in **Marulan**

Mass times in **Goulburn** are:

Saturday vigil Mass 5pm. at
St. Peter & Paul's Old Cathedral
Note the earlier time during winter

Sunday 8am. at Fatima, North Goulburn

Sunday 10 am. at Sts. Peter & Paul's.

St. Joseph's Church, Tarago

2nd Sunday 10.30am Mass

4th Sunday 10.30am Holy Communion

Enquiries: 4842 2444



GOD'S REMNANT ASSEMBLY AUSTRALIA (GRA Australia)

Would you like to know more about Jesus?

Do you want to know the LIFE He has for you -

your destiny, your gifts, your purpose?

We are a husband and wife team with GRA, a trans-denominational missionary movement. GRA works around the world, including Iraq, Iran, Afghanistan, Nigeria, Sudan and is new to Australia. We believe Australia needs the Word, fresh and new, as it is being shared around the world and setting lives alight with the beauty and Truth of Jesus.

We have started a home Church in our community and introduce ourselves – Bunja and Judith Smith. If these words have stirred or touched you please contact us to hear more about this Ministry that is new to Australia:

by phone - **0401 912 193** or by post -

Pastors Bunja and Judith Smith

Gods Remnant Assembly Australia

GPO Box 1695

Canberra City ACT 2601

Be part of this exciting work in our community:

Sunday morning - we sing and study His profound truths

Tuesday evening - we plan the ministry, outreach and study His Word

Thursday evening - we praise and enjoy a power prayer hour.

Jesus' love never fails. John 15 : 12

Anglican Church Services

February

St. Mark's - Bronte

Sunday 10th 11.30am

St. Bartholomew's - Windellama

Sunday 24th 11.30am

Harvest festival celebration combined with the 77th anniversary of the Windellama Anglican Women. The service and auction of goods will be followed by a light luncheon to be held in the church grounds.

March

St. Mark's - Bronte

Sunday 9th 11.30am Easter Sunday

St. Bartholomew's - Windellama

Sunday 23rd 11.30am

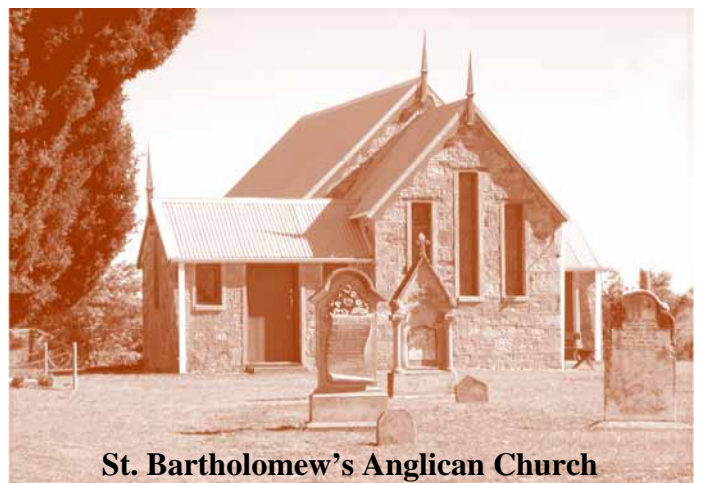
Notices

AGM of the Windellama Anglican Women will be held at *Fassifern*, Windellama Road Windellama on

Monday February 11th at 12pm.

Our Rector Robert Lindbeck may be contacted on 4821 3631

Although both our Churches are nominally Anglican, worshippers of all denominations are welcome at all services.



St. Bartholomew's Anglican Church



- DAMS
- EROSION CONTROL
- CLEARING
- QUARRIES
- EARTHMOVING
- CRUSHING
- SUB DIVISIONS
- DEMOLITION
- BULK HAULAGE
- CIVIL WORKS

ANDY DIVALL: 0427 298 200

Plant Allocation

PETER CROKER: 0428 298 201

Truck Allocation

TROY COOK: 0428 298 200

OFFICE: 02 4829 8200

FAX: 02 4829 8257 • AH: 02 4829 8209

CARRICK HILL VIA GOULBURN



Goulburn Sand & Soil

- DECORATIVE GRAVELS & PEBBLES
- GARDEN MULCHES
- GARDEN SOILS
- COMPOST
- PAVERS & BLOCKS
- ROADBASE
- SAND
- GRANITES
- ROCKS/RETAINING WALLS



**CNR Braidwood & Bungonia Roads
GOULBURN**

48218244



CARBON TRADING FOR FARM FORESTRY

There has been a lot of (mis) information about carbon trading. Carbon trading first came to public attention with the development of the Kyoto Protocol in 1990. The protocol outlined targets for reduced carbon dioxide emissions and the way that this could be achieved. One suggested method has been the use of trees to sequester carbon, thus offsetting carbon dioxide emissions.

Kyoto laid down some rules for the trading of carbon sequestration (or emissions) trading. Native forests do not qualify for carbon trading, nor do plantations that were established before 1990. Thus the only carbon tradeable commodity is a plantation, either native or exotic, that has been established on cleared agricultural land after 1990. A second rotation, that is a plantation clearfelled and re-established, does not qualify if it was originally planted before 1990.

There were further restrictions imposed by Kyoto. Because all the details were worked out in a hurry, Kyoto assumed that if a plantation were to be harvested, then all the carbon that had been sequestered to that point would be released back into the atmosphere. This meant that plantations that were to be harvested for timber products effectively did not qualify for carbon credits. This is plainly incorrect. It has been shown that 70% of carbon remains sequestered from a plantation that is harvested. Even if pulp and paper products end up in landfill sites, the carbon remains stable and sequestered under landfill conditions for a very long time.

A further problem with the Kyoto protocol is that it requires a plantation to remain in the ground for 100 years to qualify for carbon sequestration credits (the length of time it takes for a carbon dioxide molecule to break down). The only trouble with this is that a plantation actively grows for 15 to 30 years (depending on species), and then remains relatively dormant until the 100 year mark. That is, for 70 to 85 years, this plantation is not sequestering carbon, and the land is locked up from other land use activities.

A better model allows for the harvesting of plantations at a time when they start to slow down in growth. This creates wood products such as house frames, roof trusses, furniture, and even paper that lock up the carbon for a very

long period of time. The plantation is then replanted and the cycle starts again. This model has been shown to sequester at least three times as much carbon over the 100 year time frame as the plant and forget model. A revision of the Kyoto protocol will be examining the issue of harvestable plantations.

So who buys carbon credits? The most obvious are the power plants that use coal to generate electricity. But there are a range of companies out there that are looking to purchase carbon credits. They include manufacturing and transport companies, and a wide range of others such as event organisers. However, these carbon purchasers do not want to deal with hundreds, or even thousands, of small plantation owners to purchase their carbon.

This is then the role for a carbon broker. A carbon broker will aggregate sufficient post 1990 plantation resource into a package that can then be sold to industry. The carbon broker will negotiate the best price for the plantation grower and make their money from the selling of the carbon rights of the aggregated plantation package.

There are a number of carbon brokers operating at present. CO2 Australia look to plant mallee type eucalypts on leased land, then sell off the carbon rights. CarbonSmart is a new company operated by Landcare Australia Limited that will purchase the carbon rights from landcare type plantings. The only problem with these two models is that the landowner will get a return for 30 years, but then nothing for the next 70 years, and the land stays out of production.

TreeSmart and The Carbon Pool are two companies that are seeking to trade in harvestable plantations. That is, the owners of the plantation can receive payment for the carbon sequestered by their plantations and still harvest the plantations and receive payment for the timber products provided they agree to replant after harvesting.

The Southern Tablelands Farm Forestry Network (STFFN) is actively working with carbon brokers to try and obtain the best deal and best result for members. STFFN is looking to run a forum in 2008 where 4 to 5 carbon brokers will be invited to give a presentation on their model for carbon broking and an outline of their company.

Just LAW

Tarago Office

4 Wallace Street, Tarago NSW 2580
Ph: 0409391211 Fax: +61(2)83234231

Office hours 9am - 3pm Tuesdays & Fridays
Please phone for an out of hours appointment
Suzanne McDonald, Solicitor

BUNGENDORE OFFICE ERINDALE OFFICE
36A Ellendon St NSW 2621 Erindale Chambers ACT 2903
Ph: (02)62380192 Ph: (02) 62314700



JOHNSON & SENDALL

INCORPORATING MULLENS

SOLICITORS - CONVEYANCERS

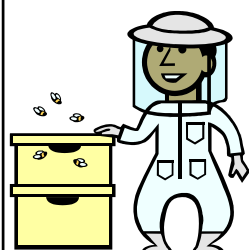
13 MONTAGUE ST GOULBURN 2580

PH (02) 4821 1588

FAX (02) 4821 9850

CYPRESS HILLS APIARY PRODUCTS

Bee Swarms Collected
Honey & Beeswax Products for sale



BOB SHAW

3225 Oallen Ford Road,
Windellama

Phone: 4844 5001



Southern Districts Piano Service

Pianos • Pianolas • Tuning • Repairs
Re-polishing • Removals

Graham Price

02 4844 5329

COUNSELLING

(Especially Post Natal Depression & Trauma)

Reiki

Australian Bush Flower Essences

Products available:

Combination Essences

Herbon

Phone Anna 4849 4304

Need a Plumber Call. . .

GRAHAM MOON

Lic. No. 194029C



Plumber - Drainer - Gas Fitter

Roof Plumber - L.P. Gas

DOMESTIC & COMMERCIAL - 7 DAYS

Phone **0428 223 677**

LOCAL ELECTRICAL CONTRACTOR

Lic. No. 174303C

24 Hour prompt service - Free Quotes

RON WENBAN

Mob: 0428 445259

Ph: 4844 5259

Fax: 4844 5617

*Rural *Domestic *Industrial *Commercial

*Test & Tag tools & appliances



BRIAN'S AUTOSCREENS & GLASS

Mirrors • Showers
Mirror Wardrobes

Windscreens • Glass

Security Screens etc.

440 Auburn St Goulburn

Ph 4821 2633

Fax 4821 9133

Community Contacts

Windellama Progress Association

Cathy Meehan (President) 4844 5554
Frances Knights (Secretary) 4844 5157

Windellama Rural Fire Brigade

Lynton Roberts (Captain) 4844 5118
Bev McGaw (Communications) 4844 5147
Sue Roberts (Treasurer) 4844 5118

Windellama Field Day Committee

Judy Alcock (Exec Officer) 4844 5188

Windellama News

Denise Johnson (Editor) 4844 5087
Gayle Stanton (Editor) 4844 5156
Cathy Meehan (Sec / Treas) 4844 5554

Windellama Garden Cub Inc.

Lynn Stockford (Sec / Treas) 4844 5029
Colleen Ellis 4844 5207

Windellama Hall Country Markets

George & Annemarie Webb 4844 5038

Windellama Historical Society

Sandra Greville (Secretary) 4844 5047
Joanna Croker 4844 5125

Windellama Landcare

Mick Ryan (President) 4844 5012
Sandra Greville (Co-Secretary) 4844 5047
Cathy Meehan (Asst-Secretary) 4844 5554

Windellama School P&C

Kelly George (President) 4844 5563
Heather Caulfield (Secretary) 4844 5120

Nerriga Landcare

Di Roberts (President) 4844 5344
Helen Rolland (Secretary) 9555 8676

Nerriga Rural Fire Brigade

John Rolfe (Captain) 4845 9160
Justin Parr (Snr. Deputy Captain) 4845 9129
Marie Kennedy 4845 9126

Jacqua Creek Landcare

Sue Armstrong (Secretary) 4844 4364
Ken Moran (Chair) 4844 4234

Wires (wildlife rescue)

Marian Pearce 4844 5244
Southern Tablelands WIRES 4822 3888

Community Health Goulburn

4827 3913

Community Transport

4823 4499

Justice of the Peace

Linda Shannon 0429 980 141
"Stirlingbrae" 3186 Windellama Road, Windellama.

**FOR ALL FIRE
OR EMERGENCIES
PHONE 000**



Important Phone Numbers

Rural Fire Brigades

Windellama	Lynton Roberts	4844 5118
Tarago	Des Kingston	4849 4503
Taylors Creek	D Elward	4849 4240
Mt Fairy	Greg Brooke	0429 425 840
Bungonia	Ian Tapper	4844 4460
Gundary	Dennis Borlan	4821 6821
Nerriga	John Rolfe	4845 9160

**PHONE 4844 5359 or
CHANNEL 21/209 Base**



Windellama SES First Aid

Graeme McFarlane	4844 5506
Kevin Muffet	4844 7143

Police

Tarago Station - Constable Gerard Hespe	4849 4411
--	-----------

Goulburn Base Hospital

4827 3111

Ambulance

000





**For Mobile users
in case of emergencies dial**

112

And it will be treated as a 000 call



February 2008

MON	TUE	WED	THU	FRI	SAT	SUN
				1	2 Nerriga Fishing Club Meeting	3
4 Bungonia Quilters School P&C meeting	5 Willowglen Gardeners Pancake Day	6	7 Chinese New Year Year of the Rat	8	9 Trivia Night	10 St. Mark's - Bronte
11 Bungonia Quilters Anglican Women AGM	12 Hall craft arvo	13 Field Day Meeting	14 Saint Valentine's Day	15	16	17 Hall Country Markets Garage Sale
18 Bungonia Quilters	19 Progress Meeting Hall craft arvo	20	21	22	23 Fire Brigade Meeting & Training	24 St. Bart's - Windellama
25 Bungonia Quilters	26 Hall craft arvo	27	28	29		

**For details of times and places - see articles inside this issue
Emergency phone numbers are on the back of this page.**