

# THE WINDELLAMA NEWS



Windellama Progress Association Hall Inc.  
Vol. 17 no. 11 –December, 2013

Editorial & Layout: Denise Johnson & Gayle Stanton  
Sec/Treas: Denise Johnson

[www.windellama.com.au](http://www.windellama.com.au)

Published Monthly

Windellama, Oallen, Nerriga, Bungonia, Mayfield, Quialigo, Lake Bathurst, Bungendore & Tarago

Hard Copy Distribution 400 - Website : 6,000 average/month

## Seasons Greetings

### WINDELLAMA BUSHFIRE INFORMATION DAY

" Presenting vital information that could save the life of you and your family "

Windellama Bushfire Brigade Shed 3762 Oallen Ford Road Windellama  
Commencing at 1:30pm Saturday 14<sup>th</sup> December 2013

Remember last years Catastrophic Day?

Fires all around us, the air thick with bushfire smoke and hot windy conditions.

Did you have your Bushfire Survival Plan ready?

We would love to see you and your family attend our annual bushfire information day. Discussing our neighbourhood safer place, helping out with tips on how to protect property, what to do with your stock or pets.

Planning to have a plan is not a plan !!

We will let you know our plans and we can help you with yours !

Let's work together and keep our great community safe.

Everyone is welcome.. so see you there



**PREPARE. ACT. SURVIVE.**

\* BURNING OFF? - Permits now required \*

Windellama Hall is your Neighbourhood Safer Place

**Annual Subscriptions** - please send your details and **\$25** (cheques payable to 'Windellama News') to cover the annual cost of postage.

All cheques please post to:

**The Secretary, PO Box 705, Goulburn. 2580**

\* Unpaid subscriptions will be cancelled after one month

If you have any short articles, anecdotes, or something else interesting about yourself, your family, or the community; please write it down and drop it in our letterbox at the Hall. We will edit it and publish it in the Windellama News.

**A LOCKED POSTAL BOX IS AT THE FRONT OF THE HALL, 3444 OALLEN FORD RD, IN THE STONE WALL FOR THE COLLECTION OF ITEMS FOR PUBLICATION**

**Items left in the box after the deadline will not be collected or included in the News**

Articles, adverts, etc may also be sent by email to:

**[newswindellama@gmail.com](mailto:newswindellama@gmail.com)**

**Adverts sent by email will not be inserted unless payment is received by the deadline.**

#### **Our Policy on Receipts**

The Windellama News makes out a receipt for all advertising payments made to the paper. We don't post out receipts to save cost and we assume that the appearance of the advertisement in the paper could normally be taken as proof of payment.

If you require a posted receipt please include a stamped self-addressed envelope with your payment.

It would be greatly appreciated if anyone sending money to the Windellama News would include their name and address and a note saying what it was for and put it in a sealed envelope. This would avoid a lot of confusion and uncertainty .

#### **Notice to advertisers, article submitters & readers**

The Windellama News is published and authorised by the Windellama Progress Association Inc. Whilst every care has been taken in the production of the News & publishing to the web page on the community website, the editor takes no responsibility for any inaccuracies, errors or omissions. All such contributors by forwarding advertising, notices, & articles, agree to indemnify the publisher & warrant that the material is accurate & neither deceptive nor misleading, in breach of copyright, defamatory or in breach of any other laws & regulations.

The responsibility for advertisements complying with the Trade Practices Act lies with the person, company or agency submitting such for publication. Original material appearing in this newsletter is copyright. It may be reproduced in part or in whole for the benefit of the community, provided that the source of the material is fully acknowledged. If you have any queries about using material from the Windellama News, please contact the editor.

## **BUSINESS DIRECTORY**

Horse Services	Tradesmen
Builder	Markets
Electrician	Winery
Entertainment	Engineering
Glass	Soap
Handyman Services	Septic Services
Health	Bitumen / Concrete
Home supplies	Shed Supplies
Home Services	Heating / BBQ's
Mechanic	Bikes & buggies
Nursery	Playgroup
Office supplies	Cattle / sheep
Piano	Excavation
Plumber	Contractors
Real Estate	Solar supplies
Rural equipment	Funeral services

### **Inside this Issue.....**

	5
SES / CFR	7
Progress Assoc	9
Nerriga Gardeners	11
Field Day Pics	13
Historical Society	15
Nerriga News	17
Willowglen Gardeners	19
Craft Show	20//21
Windellama RFS	23
School News	25
Landcare	27
Gardening Tips	29
Church Info	33
Alpacas	35
Classifieds	36-37

**DEADLINE FOR ALL ISSUES IS THE 20TH OF THE PRECEEDING MONTH**

**YOUR WINDELLAMA NEWS IS PRINTED BY BUSINESS REQUISITES, GOULBURN**

# Community Notice Board

## ARDMORE PARK MODIFICATION

You should all be aware that there has been an application by Ardmore Park Quarry to use Windellama roads as a so-called "local delivery route". The NSW Department of Planning and Infrastructure has completed its assessment of the application and has referred it to the Planning Assessment Commission for determination. The recommendation is to allow the modification, with conditions, which do not address the majority of objections the local community put forward.

There will be a Commission meeting at Bungonia Community Hall on Wednesday 4<sup>th</sup> December at 3.00 pm. The meeting is open to the public to observe the proceedings. Anyone wishing to address the meeting must register to speak by contacting Miss Rebeca Chungue on 9383 2112 by 1 pm Friday 29<sup>th</sup> November.

Turning Oallen Ford and Windellama Roads into haul roads for this development will change the rural nature of the area and bring no benefits to the communities of Bungonia and Windellama. Unless the community uses its voice to let its feelings be known, the ratepayers of Goulburn Mulwaree will be picking up the repair costs of the roads as the contribution for road maintenance will just be a drop in the ocean compared to the damage caused by these trucks. The local community will be sharing a basic rural road system with huge trucks five and a half days a week.

Consider your options and attend the meeting to voice your concerns and ensure the rights of the local communities are taken into account.

## A GREAT BIG THANK YOU

On behalf of the Windellama Small Farms Field Day Committee, I would like to thank all our wonderful volunteer helpers who came to our assistance again this year. Without your help we couldn't hold the day, which so many people enjoy.

Again I ask if you have any suggestions – constructive criticism welcome – please **c o n t a c t   u s   t h r o u g h** [fieldday@windellama.com.au](mailto:fieldday@windellama.com.au) or telephone me on 4844 5157

Thank you

Frances Knights – Field Day Co-ordinator

## Golden Wedding Anniversaries

Sandra & Tony Greville celebrated their 50th Wedding Anniversary in November

Irene and Lloyd Turner celebrate their 50th Wedding Anniversary in December

Congratulations from all us.

## And the winners are .....

Congratulations to the following Field Day raffle winners.

1st prize: L Bolin

2nd prize: C Woodcock

3rd prize: Barry V.

Also, congratulations to winner of the lucky gate prize, S Bott from Taralga.

**WANTED EDITOR** - for Windellama News, every second month. Must know publisher programme. All queries please direct to Denise Johnson on 4844 5087.

## Craft @ Windellama Hall

Craft at Windellama Hall will finish on 10th December 2013 and resume on Tuesday 11th February 2014

All crafts are welcomed. Come and meet the local ladies have a chat and a cuppa, all for the price of a 1.00.

For more information ring Irene 4844 5214

**Andrew Pearson**  
**4844 5838 or**  
**0400 285 765**  
**REASONABLE RATES**

**FOR HIRE**

**With Operator**  
**Backhoe - Slasher - Loader**  
**Grader Blade w/rippers**

**SCRAP METAL REMOVAL**

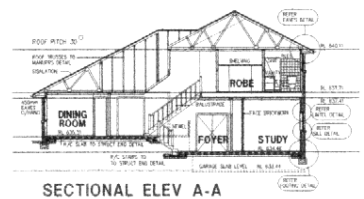
**MOBILE MECHANICAL REPAIRS**

**Diesel / Petrol**  
**Auto Electrical**  
**For your truck, tractor, car**

**ACOM DESIGN**

**PO Box 806,  
Goulburn 2580**

**Yarralla,  
Oallen Ford Rd  
Bungonia 2580**



**Robert C Everingham**

***Building Designer & Draftsman***

**New Homes, Alterations & Additions**  
**Duplex, Villa, Townhouse Developments**  
**Rural, Commercial, Industrial Buildings**  
**Free Quotes - Competitive Rates - Prompt Service**  
**Energy Efficient (SEDA), Eng Dwgs: Mech, Struct, HVAC**

**TEL 4844 4321**

**MOBILE 0417 682 022**

**FAX 4844 4323**

**EMAIL [acomdesign@bigpond.com.au](mailto:acomdesign@bigpond.com.au)**



MEMBER  
STANDARDS AUSTRALIA



MEMBER  
**BUILDING  
DESIGNERS  
ASSOCIATION**  
OF NEW SOUTH WALES INCORP

***Dallens  
Mobile Mechanic***



**Rob Hutchison**

**Ph: 02 4844 5727  
Mob: 0401 078 483**

- **All mechanical repairs**
- **Breakdown service available**
- **Travel to you**
- **Motor re-builds**
- **New car services**
- **Stationary engine repairs**
- **Clutches, brakes**
- **Tractor repairs & re-builds**

**4844 5727**

**BOB RUDD FUNERALS**



**73 Reynolds Street  
Goulburn NSW 2580**

**Phone 4822 4400**

**Your Local Family Owned  
Funeral Directors**



**David Rudd & his sister Shane**

**WE WORK HARD TO GAIN YOUR  
CONFIDENCE & TRUST**

**Introducing our New Chapel** with on sight parking  
Pre-paid funerals available as well as pre-arranged funerals.

***Just ring and we will come to you***

Servicing Windellama, Goulburn, Mulwaree Shire, Marulan,  
Gundaroo, Braidwood, Gunning, Dalton, Tallong, Bungonia,  
Taralga, Yass, Braidwood

**Monumental work - Just ring us for a quote**

We welcome your enquiries.

**\*\* SUREPLAN as little as a \$1 a week Funeral Fund\*\***

**Contact our office**

**4822 4400**



# Community Notice Board



Best wishes to all of our readers and supporters from the Team at the Windellama News.

I would like to take this opportunity to thank our Delivery Team, our Advertisers and especially Denise for all their hard work and support..

Wishing you all a very Merry Christmas, and a successful, safe and happy 2014.



## Cheerio

Cheerio call to Neville Ling who we have heard has not been the best lately. Hope you are on the mend soon

## Windellama Bridge

Windellama Bridge will be closed from 7:30am on Monday 14 October 2013 until 5:00pm on Friday 6 December 2013 for bridge replacement works. Detours will be in place via Brisbane Grove Road.

## WINDELLAMA HALL COUNTRY MARKETS

**SUNDAY**

**15th December**

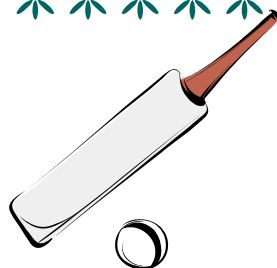
**9AM TO 1PM**

**LOCAL PRODUCTS  
FRIENDLY ATMOSPHERE  
FOOD & REFRESHMENTS  
PLENTY OF PARKING  
MUSEUM OPEN**

Enquiries to Bob Shaw  
on 4844 5001

Market Day kitchen helpers needed to serve food and drinks once or twice a year.

## New Year's Day Cricket Challenge



This year the Progress Association Cricket Challenge on NSW will be at Bungonia on January 1st 2014



At Divall's we accept broken concrete, bricks and tiles and transform it in to....



**Stabilised Site Access Rock**  
For entrances to building sites to stop mud entering streets (32mm to 80mm)



**Recycled 20mm Aggregate**  
For drainage behind retaining walls, sub-soil trenches where no spec is required.



**20mm Recycled Road Base**  
For farm roads, driveways, paths where no spec is required (size 20mm - 0mm)

## Recycled Products

[www.divalls.com.au](http://www.divalls.com.au)

## Saving our Environment

Divall's accept green waste: trees, prunings, grass clippings and turn it in to....

### Eco Soil

A mixture of green waste and screened top soil from job sites for garden beds, and pots (size 20mm)



### Enviro Mulch

For mulching around trees and gardens



**Gouldburn Sand & Soil**

**PH: 4821 8244**



## Windellama SES First Aid & CFR

Well Gayle, I too can't imagine that this is the last one for the year.

May I take this opportunity to thank the lady who did her C.F.R. training with the N.S.W. Ambulance Service. Folks may I once again remind you that there is a lot expected of those who serve your community, under the banner of the C.F.R.. Maybe some of you could possibly make a New Year's Resolution, along the lines of , this year I will join up too. November so far, has had a callout per week, still a bit over a week to go!

Our local controller, by the name of Bob Bell, has just returned from a trip to the British Isles. This trip was so that he could examine, also take part in, Swift Water dramas as encountered by various organisations over there. We were privileged to see some dramatic footage of incidents that were encountered by the rescuers. My hope is to show these at our unit. There are lessons for all of to observe. That includes all people who are members of Rescue units or associate organisations. We may have to work together on some occasions. Oallen Foord springs to mind. This is, as you all know, is not the only bad crossing in the area.

Our Unit at Windellama, is now having the finishing touches carried out on the interior, then painting will be the next item on the agenda, along with the installation of the "Kitchen Unit", followed by the carpet laying. Yes it will be finished.

The Windellama Garden Club has offered to help us with the planting of "whatever", after we get some landscaping carried out. Could someone possibly help us with the landscaping, please?

It is my pleasure to, on behalf of all our Team, Wish everyone a Happy and Healthy Xmas And New Year.

From Kevin Muffet

Team Leader

Windellama S.E.S. & C.F.R.

## Windellama Garden Club Inc.

At our recent meeting we discussed the Art, Craft and Flower Show set down for the 22nd February 2014.

Exhibitors will find a copy of the schedule in this edition of the Windellama News on pages 20 and 21 and we are hoping for lots of entrants with entries.

Our stall at the field Day proved very popular with lots of enquiries about flowers and plants that were on display.

Merry Christmas to the Windellama News team and to all our readers from our garden club.

Pam Williams

Get well cheerios to three ladies known to the Garden Club; Kay Cruise with a broken arm, Lyn Stackford, a broken leg and Kate Shelly with a bad shoulder injury.

Members of the Windellama Garden Club were saddened to hear of the death of Kevin Smith from Nerriga. Kevin took our garden club on several walks around the Nerriga area and his knowledge and humour will be missed

### Rainfall Stats



#### 16th October to 15th November

**Rosewood**, Windellama Road, Windellama

47.5 ml / 5 days

**Gar-Den**, Oallen Ford Rd, Oallen

54 ml / 5 days

**Johnno's Store**, Oallen Ford Rd, Bungonia

54.4 ml / 4 days

**Tarkierelea**, Fernleigh Close, Windellama

ml / days

**Bee Ranch**, Oallen Ford Rd, Windellama

46.5 ml / 6 days

**Corang Cottage**, Braidwood Road Nerriga

ml / days

**Tarago Village**

67ml / 5 days

**Nerrimunga Creek Road**

34.6 ml / days

**Willy Weather** ml / days 1st-15th November

# F I F E ' S S T O C K F E E D S

---



Round Bales  
Pasture Hay  
Square 8x3x2  
Lucerne Hay  
Rye & Clover



Also suppliers of Bird Seed, Dog Food, Cat Food,  
Wheaten Chaff, Oaten Chaff, Stud Mix

**51-52 Knox St Goulburn**

( 0 2 ) 4 8 2 2 3 1 1 1

**New to the Area is a fully  
qualified & licensed Carpenter**

**Specialising & covering all  
aspects of Carpentry work**

**Decks, pergolas, small  
renovations, any odd jobs,  
handy man work,  
property maintenance, gardening,  
with many other services available.**

**WINDELLAMA  
CARPENTRY &  
HANDYMAN SERVICES**

James Walsh  
64 Charles Road,  
Windellama 2580  
0447520173  
48445940

**ABN: 90 656 821 885**



**NO JOB TOO SMALL WITH FAMILY FRIENDLY PRICES.**

**Email: [windellamacarpentry@yahoo.com.au](mailto:windellamacarpentry@yahoo.com.au)**

**For a no obligation quote or discussion,  
and a prompt, reliable service, please give me a call.**

**JAMES WALSH**

**4844 5940**

**0447 520 173**





This year the day began beautifully and despite the wind, which picked up during the day, the weather was good. Unfortunately the fires in our catchment area may have been the reason our numbers were down slightly, however, we had a wonderful crowd to enjoy the many and varied exhibitors and entertainments available. Visitors came from a wide area and we hope they felt their journey worth while.

We welcomed two of our local wineries this year for the first time. The wine tastings were most popular and we featured the local wines in the bar. Another first time exhibitor this year was Tobais Sculptural Metal, with his decorative metal work. It is amazing what can be made out of scrap.

The Field Day committee would like to thank all those who helped with the running of the day, especially those who worked tirelessly for days before the event to make sure the grounds were looking their best, and to those who helped with the logistics of making sure all the supplies arrived at the hall in time. They then backed up the following week to clean up the hall and grounds. A special vote of thanks to Heather, for her wonderful work with our advertising and to Greg for his organisational skills.

The children's activities were a great hit again this year, thanks to the school community. We would like to congratulate Donna, Julie and all the parents who worked tirelessly to ensure there was plenty to keep the children occupied. The "pony pat competition" was a great hit.



The entertainment at the Field Day was most enjoyable this year. We welcomed Neville Burns, our reptile expert, back again this year. As usual it was a most popular exhibit. His anecdotes were well received and his knowledge of the subject of reptiles is boundless. Many of our visitors passed on their congratulations as they were leaving again this year.

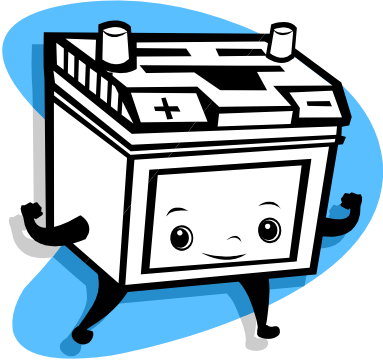
Our facilities also received praise, which brings me to my next request. We had a very successful day and are financially secure for the next twelve months. Once our insurance has been renewed, we will have money to be used in improving our facilities. The Association committee would be interested to hear from community members how they would like the money spent. A couple of ideas were brought up at our last meeting, however, perhaps those of you who worked so well during the day may have some thoughts on improvements. Please contact me either by phone on 4844 5157 or email at [fieldday@windellama.com.au](mailto:fieldday@windellama.com.au)

Our final meeting for the year will be held on Monday 16<sup>th</sup> December at 2 p.m. All members of the community are welcome to join us – annual subscription just \$5 – and enjoy our Christmas afternoon tea.

**Frances Knights – Secretary**



## MAINTANANCE FREE BATTERIES



N70ZZ \$140 TRACTOR /4WD  
NS50P \$ 100 FALCON /HOLDEN  
NS40Z/ZL 75.00 COROLLA/SMALL CAR



## SOLAR BATTERIES PRICED BY AMP HOURS

7 DAYS 48447103 0419239962

2 YEAR WARRANTY

2061 WINDELLAMA ROAD QUALIGO



- Complete rural & urban maintenance
- House & rural fencing
- Pre-sale facilities INCLUDING professional photography
- Handyman service
- Firewood delivery
- Lawn care/garden specialists
- All residential & commercial properties



# ADVANCE

## PROPERTY MAINTENANCE

- Covering Southern Tablelands, Highlands & the ACT

**MOBILE: 0427 485 129**

**apm@outlook.com.au**





## Nerriga Gardeners



Thank you very much to Sandra & Bob South for the coffee stop before we wandered off to John & Barbara's & Christine & her husband's gardens in Mongarlowe. The hospitality was wonderful as were the gardens. Both were full of colour and it's truly amazing what a little bit of shelter and a bit more rain can create.

Please note our December gathering will be on the 2nd Wednesday of December, the 11th, to avoid that week before Christmas & we will be having a wander & lunch in Braidwood. We will be meeting at Nerriga Hotel at 9.30am for car pooling.

As usual all are welcome. For further info - Kay Hamer 4845 9021 or Di Roberts 4844 5344





• Rural & Residential • Houses & Land • Acreage • Appraisals & advice • Rentals

4 Wallace Street  
Tarago NSW 2580

Phone: (02) 4849 4297

Fax: (02) 4849 4382



**SALES** — Judy Alcock  
judy@taragorealestate.com.au  
Mob: 0439 603 234

**RENTALS** — Debbie Carey  
debbie@taragorealestate.com.au

Friendly, local professionals  
Honesty and professionalism guaranteed  
Affiliated with all major real estate listing websites  
Available 7 days by appointment



[www.taragorealestate.com.au](http://www.taragorealestate.com.au)

**GARAGES • FARM BUILDINGS • BARNES • EQUINE • INDUSTRIAL • STEEL KIT HOMES**



CATALOGUES AVAILABLE FROM TARAGO REAL ESTATE OR TARAGO SERVICE CENTRE



**Need more living space?**

We can customise most of the rural and industrial buildings to suit your needs.



**Consider Wide Span Sheds**

The Wide Span Sheds range includes barns, farm buildings, stables, carports, garden sheds, homes, weekenders and studios.



**Need a Builder?**

We can put you in touch with local experienced, professional shed and house builders.



**Call Tarago Real Estate (02) 4849 4297**  
...your local authorised agent for all your building requirements.

**Wide Span Sheds**  
No Compromise Steel Building Solutions.



# Windellama Field Day 2013





## MICK'S MULTI TRADES

ABN: 90 178 544 738

Multi Skilled Tradesman

Windellama NSW

Lic # MVTC 126573

Mob: 0413 059 587

Email: micksmultitrades@gmail.com

PROUDLY SUPPORTING THE COMMUNITY OF WINDELLAMA IS MICK,  
A MULTI SKILLED TRADESMAN, A DIESEL MECHANIC BY TRADE,  
ALSO  
AN EXPERIENCED HANDYMAN, GENERAL LABOURER,  
PLANT OPERATOR AND TRUCK DRIVER.

I HAVE ALWAYS LOOKED AFTER THE LOCALS, AND CAN TURN A  
HAND TO ANY JOB SO SHOOT ME AN EMAIL OR PHONE ANYTIME,  
YOU'LL BE PLEASANTLY SURPRISED AT MY DOWN TO EARTH RATES.



**SMH Civil Engineering**

**SMH Civil Engineering Pty Ltd**

**Strategic Engineering Solutions**

- ✓ Project & Construction Management
- ✓ Geotechnical & Environmental Engineering
- ✓ Remediation / Contaminated Sites
- ✓ Waste Management / Resource Recovery
- ✓ Quarries / Mining / Landfills
- ✓ Rail Infrastructure / Asset Management

**[www.smhce.com.au](http://www.smhce.com.au)**

**[info@smhce.com.au](mailto:info@smhce.com.au)**

**0418 563 888**

Postal only - PO Box 999  
RIVERWOOD NSW 2210



Goulburn & Southern Tablelands Newest Winery

**Cellar Door Upcoming Open Days**

**Hours – 11am to 4:00 pm**

**DECEMBER: Saturday: 14th**

**Sunday 15th**

~check website for any changes or  
call prior for a drop in visit or purchase anytime ~  
*25 kms down Windellama Road from Goulburn  
turn left into Muffets Road*

email: [admin@yarralawsprings.com.au](mailto:admin@yarralawsprings.com.au)

web: [www.yarralawsprings.com.au](http://www.yarralawsprings.com.au)



**133 Muffets Road, Quialigo**  
**Ph 4844 7188**





Again, this is from Max Laidley's 'Tickner' book and this is a reproduction of the letter the widowed Mary Ann Tickner wrote to the executors of her husband's will after arriving at Albury.

A Letter by Mary Ann Tickner  
Albury, April 25th 1855

Sir,

I write to inform you that we have arrived in Albury safe and well after a long journey of five weeks and three days.

Sirs, I received your kind letters in Berrima and I thank you for your kindness. There is no Commissioner staying in Albury at present so the Magistrate has to sell the land when there is any to be sold. Almost all the land handy to the -township of Albury has already been sold.

Mr James has bought a farm a few miles out of Albury but that would not suit me. He gave five pounds an acre for it. He gave more than I could give. A gentleman in Albury bought two farms adjoining to Mr Butt a few days before we got to Albury and Mr Butt letting him know I was trying to buy a piece of land as near the town as I could, the gentleman came to Mr Butt to see me. He said I could have the farm at the same price he gave for it. That is one pound nine shillings per acre. There is forty-seven acres in the farm and that will be as much as we will be able to manage. Mr Butt knows the land very well and he says it will suit us very well .

Everything is very dear in Albury. Flour is eight pounds, tea is ten pounds a chest, and sugar is four to five pounds a hundred. I have found very kind friends in Albury thank God.

I am staying in Mr Butt's yard till I can get a little money up to put up a bark place. Mr Butt has paid for the forty-seven acres of land until I can get it sent up. I was short of money before I got to Albury and now am quite penniless. Mr Butt is keeping me and the children until I can get a little sent up.

Sir I have bought the land in Edward's name as he will be the manager of it .

Sir Please to oblige me by sending me the sum off 130 pounds. It is as little as I can do with or I shall not get any wheat in this year. Edward and Mr Butt's lads are clearing a piece of land to put in a little wheat if we can but I cannot carry on business without money.

Sir please to send it as soon as you can as we are in want.

Sir I remain your obedient servant

(signed) Mrs Peter Tickner.

[This letter was addressed to the executors of her husband's will, Henry Thompson and John Quirke. They arranged to send the money.]

# ~~The Loaded Dog Hotel~~



Tarago EST 1848

Hoteliers: Nicole & Mark Ryan [www.loadeddoghotel.com](http://www.loadeddoghotel.com) 02 4849 4499  
1 Wallace Street TARAGO NSW 2580 | 02 4849 4499 | [loadeddoghoteltarago@gmail.com](mailto:loadeddoghoteltarago@gmail.com)

## LIVE MUSIC @ THE DOG

New Year's Eve

**LUKE O'SHEA**

*New Sunday  
Night Menu*



We would like to wish everyone  
a Very Merry Christmas and a  
Happy New Year

Mark, Nicole & Emily Ryan



## The Dog Bistro

Nicole's Fish'n'chips Thursdays 6 - 8pm \$7:50  
Home made Pizza all day every day, eat in or take away



Bistro Hours:

Friday & Saturday 6pm - 8:30 pm | Sunday 6pm - 8:00pm  
Lunches 7 days 12 - 2pm



## What's Happening in Nerriga

November has been a very busy month for Nerriga in such a short time ...

**Melbourne Cup Day Celebrations** were held at the Nerriga Pub and Phil and Sarah put on a great spread with the help of Sandra. Dave Smith ran an excellent Sweep. Leon, Betty and Jenny won the Best Hat prizes of Champagne & Caviar.



Nerriga Progress once more headed up the hill to Sassafras to cater for the 4th Annual Sassafras Endurance Ride. Serving cakes and food from Saturday afternoon through to "sold out" on Sunday afternoon. Thanks to Alan and Kirk for having us along again. Thanks also to all the volunteers who helped with the cooking and catering.



Sadly, last week, we lost one of Nerriga's stalwart residents, Kevin Smith.

He was born in Nerriga, and lived here all of his life. His funeral was held at the Catholic Church in Nerriga and the road was lined with cars both sides of the Road from the Hall down past the Pub. Kevin has been laid to rest in the Catholic Cemetery on Nerriga Road.

Nerriga Progress offered to do the catering for his Wake which was held at Nerriga Hall. Family and friends all helped with wonderful food, and we thank the Smith family for their very generous donation to the NPSA.

On behalf of the NPSA I wish everyone a happy and safe Christmas and New Year. I hope 2014 is everything you wish for.

Helen Rolland



### December Diary -

Nerriga Progress Meeting

Saturday December 7 at 2pm

All Welcome



# *Rusty Balls*

- Natural bush soaps
- Pet shampoo
- Anti-bug balls - natural insect repellent
- Blind Baking Balls
- Hand made ceramics

Gary & Denise Johnson

**4844 5087**

[sales@rustyballs.com](mailto:sales@rustyballs.com)

[www.rustyballs.com](http://www.rustyballs.com)

# **SHEPHERD'S HILL NURSERY**

**321 George St, Marulan**

**Ph 4841 1404**

Fax: 4841 1454 Mobile: 0413 047 105

*Look for the house on the hill*

For all your garden needs &  
acclimatised plants

Potted colour, Seedlings, Bulbs, Fruit trees,  
Ornamental trees, Windbreakers,  
Shrubs and more  
Potting Mixes & quality soils & mulches.  
Pots, Statues & Gifts

Gift vouchers & Eftpos available

We are members of NGI NA

Nursery & Garden Industry NSW & ACT



**SEPTIC TANK  
&  
GREASE TRAP  
CLEANING SERVICES**

**0408 483 943**

Bob Baird Goulburn

**PH: 4822 3290**

7 DAYS—SERVICING ALL AREAS

## **BUSINESS REQUISITES *Sales & Service***

- Photo Copiers
- Fax Machine
- Cash Registers
- Computers
- Stationery
- Consumables

**Ph: 4821 5109**

**E: [bus\\_req@ozemail.com.au](mailto:bus_req@ozemail.com.au)**

**10 Russell Lane, Goulburn**

*Printer of your Windellama News*

# Willowglen Gardeners

<http://www.whispersfromwillowglen.blogspot.com>

November Willow Glen Gardeners' meeting was Melbourne Cup Day and was hosted by Ross and Joy at their beautiful home on Run-O-Waters Drive, Goulburn. Ross and Joy have done an impressive amount of work since the Garden Club last met at their place and it was looking beautiful, particularly Joy's rose garden and the water feature. Many thanks to Ross and Joy for an enjoyable day.

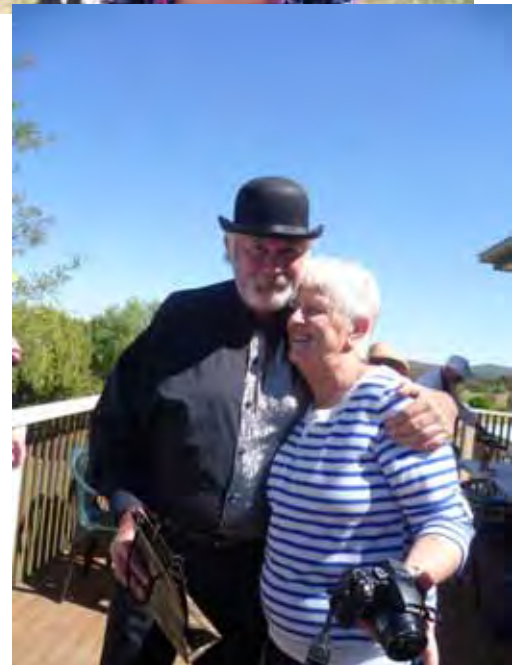


Everyone was into the spirit of the day with their Crazy Hats, which you will see from the photos. Liz-Anne won the hat competition with her koala confection and no-one topped Tom's bowler.

It was very pleasant sitting on the verandah eating delicious food, some people drinking some nice wine and admiring the view of garden and into the distance.

December will be the Christmas Meeting to be held at David and Pauline Rouse's, 1047 Mt Fairy Road, on Tuesday 3<sup>rd</sup> December, starting at 11am. David and Pauline have very kindly offered to do a sausage sizzle and

you are welcome to bring anything else for a barbeque. Also please bring something for dessert and a plant to be swapped amongst each other as Christmas presents.





## **WINDELLAMA ART, CRAFT AND FLOWER SHOW – 22<sup>nd</sup> FEBRUARY 2014**

Entry forms will be available at the Hall on Friday evening and Saturday morning. Enquiries Di Andrews – 4844 5127 or Pam Williams – 4844 5194. The entry fee for each class is 50 cents. First prize is \$2.00 and Second prize is \$1.00. Special prizes have been donated and will be awarded in some sections. The Judges' decisions will be final. Entries will be received between 5.00pm and 8.00pm on Friday and 8.00am and 9.30am on Saturday. Judging will commence at 10.00am sharp, the Hall will re-open at 12.00pm

Exhibitors please note: as no protective wire will be used, exhibitors enter at their own risk. Every care will be taken but no responsibility will be accepted. All entries must be removed from the Hall between 3.00pm and 3.30pm on Saturday. Entry forms must be produced before items can be collected.

A Perpetual Trophy will be awarded to the overall winner of all events in the Craft and Flower Show. A point system will operate for this award, whereby the first and second place getters in every section will accrue their points for the day. This trophy has been kindly donated by Mrs Iris Roberts.

### **FLOWER SHOW**

Please note: Champion rose and most outstanding arrangement will both be awarded a ribbon. Maximum exhibit space allocation is 60cm (2ft). All arrangements must be self-supporting.

Enquiries: Di Andrews – 4844 5127.

#### **Open Section**

1. Arrangement using any colour plus white – own foliage
2. Arrangement using weathered wood – free expression.
3. Arrangement in a teapot accompanied by a lid.
4. Arrangement using Aust Native flowers & foliage – free expression.
5. Arrangement using glass – free expression.
6. Arrangement using flowers & fruit – free expression.
7. Float bowl (flowers must be floating)
8. Wine & Roses – free expression.
9. Foliage arrangement.
10. Miniature garden – free expression.

#### **Dried and Artificial**

1. Dried arrangement.
2. Arrangement using silk or artificial flowers – free expression.
3. Item using silk or artificial flowers – free expression

#### **Cut Flowers**

1. Branch of any flowering shrub in a vase or other container.
2. One red rose – hybrid tea.
3. One pink rose – hybrid tea.
4. One yellow rose – any variety.
5. One rose other than red, pink or yellow – hybrid tea.
6. Any rose in full bloom.
7. Any rose in three stages
8. One cut of any rose not hybrid tea
9. One cut of miniature rose.
10. Any cut of flower not mentioned.
11. Bowl of roses – any variety.

#### **Plants Growing in containers**

1. Foliage plant in container.
2. Flowering plant in container.
3. Fern plant in container.
4. Succulent in container.

#### **Children's Open Section**

##### **Infants**

1. Arrangement in a jar.
2. Vegetable and/or fruit figure.

##### **Primary**

1. Arrangement in a jar.
2. Vegetable and/or fruit figure.

#### **Fruit & Vegetable Section**

1. 4 Eggs.
2. 4 stalks of Rhubarb.
3. 4 stalks of Silverbeet.
4. 4 Potatoes
5. 4 Tomatoes.
6. 4 Carrots.
7. Collection of any 4 Stone Fruit.
8. Collection of any 4 Fruit (not stone).



## CRAFT SHOW

Enquiries: Di Andrews – 4844 5127

### Section A – Knitting & Crochet

1. Lady's or Gent's pullover or cardigan.
2. Any other article knitted or crocheted (not a rug).
3. Child or baby item.
4. Fancy doily.
5. Knitted or crocheted rug.
6. Homespun or hand woven article.

### Section B - Sewing

1. Any embroidered article.
2. Machine sewn article.
3. Any hand quilted or patchwork item
4. Any machine quilted or patchwork item.

### Section C – Craft Open

1. Hand painted or appliquéd article.
2. Long stitch tapestry.
3. Cross stitch tapestry.
4. Machine or handmade toy/teddy bear or doll.
5. Dressed teddy (clothing only judged).
6. Dressed doll (clothing only judged).
7. Fancy coat hanger.
8. Any cushion.
9. Any beaded item.

### Section D – Craft Open

1. Folk art (decorative).
2. Folk art (novice).
3. Craft from wood or metal.
4. Art painting or drawing – any subject.
5. Best greeting card.
6. Page of scrapbooking.
7. Any craft not mentioned.

### Section E – Children

1. Under 12 & over 8 – Page of scrapbooking.
2. Under 12 & over 8 – Painting, drawing or computer art.
3. Under 12 & over 8 – Any other item.
4. Under 8 & over 5 – Page of scrapbooking.
5. Under 8 & over 5 – Painting, drawing or computer art.
6. Under 8 & over 5 – Any other item.
7. Under 5 years – Painting or drawing.
8. Under 5 years – Any other item.

**Note to Exhibitors: \* Photos to be 10cm x 15cm mounted on stiff card, no thicker than 1mm with a max of 2cm border all round (no frames).**

**\* Set of prints (class 4) to be all one size.**

**\* No exhibits will be considered that do not comply with the hanging systems employed.**

**\* Each entry to have entrants name & class on back.**

**\* Any entry that has won 1<sup>st</sup> prize at a previous Windellama Country Fair is ineligible for entry.**

**\*\*NB: Please refer to conditions opposite.\*\***

## COOKING

Enquiries: Jan McCarthy – 4844 5033

### Section A

1. Fruit cake.
2. Boiled fruit cake.
3. 6 patty cakes – no icing (no paper cases).
4. 6 plain scones.
5. Apple pie.
6. 6 pikelets.
7. Chocolate cake – no icing.

### Children's Cooking

#### Under 5 years

1. Decorated Arrowroot biscuit.

#### 8 years & over 5 years

1. Decorated Arrowroot biscuit.

#### 12 years & over 8 years

1. Decorated Arrowroot biscuit.

### Jams & Pickles

All jams & pickles must be in a clean 12.5 cm high screw top jar. (No commercials on lids or jars)

### Section A

1. Plum jam.
2. Two fruits jam.
3. Fruit jelly.
4. Marmalade jam – any flavour.
5. Lemon butter (in a 10cm jar).

### Section B

1. Green tomato pickles.
2. Mustard pickles.
3. Tomato relish.
4. Tomato sauce.

## PHOTOGRAPHY

Enquiries: Pam Williams – 4844 5194

### Section A

1. Plant study.
2. Relic of the past.
3. People study.
4. Three prints on one mount (local subject from The Windellama Fire Brigade area)
5. Portrait.
6. Landscape.
7. Animal.
8. Most humorous photo.
9. Country life.

### Section B – Children 16 & Under.

1. Any subject.

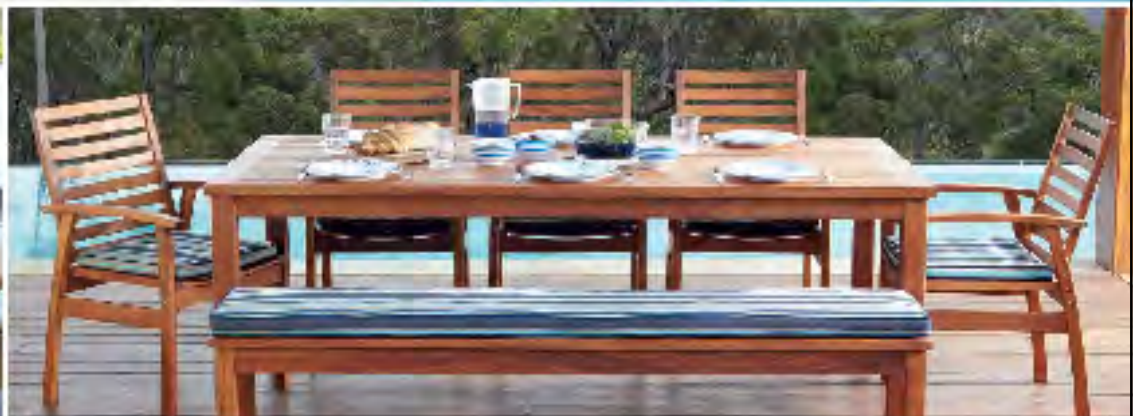
# Better Barbeques

At Barbeques Galore you'll discover a whole new world of outdoor entertaining.

A lot of places are selling outdoor products, like Barbecues. The difference is WE can show you how to use them!

We've got a huge range of the latest aluminum, wicker and timber settings to suit both the size and style of your backyard.

**LARGE RANGE**    **GREAT PRICES**  
**FRIENDLY STAFF**    **GREAT SERVICE**



**4821 1252 or 4821 4885**

388 Auburn Street, Goulburn [www.barbequesgalore.com.au](http://www.barbequesgalore.com.au)

**BARBEQUES  
GALORE**

**BBQ Better.**



# WINDELLAMA VOLUNTEER RURAL FIRE BRIGADE

## WINDELLAMA RURAL FIRE BRIGADE



Report all Fires 000 Brigade enquiries 4844 5359 Yass - 6226 3100  
& Emergencies UHF 21

RFS website [www.rfs.nsw.gov.au](http://www.rfs.nsw.gov.au)

or Brigade website [www.windellamarfs.com.au](http://www.windellamarfs.com.au)

Captain – Rex Hockey 4844 5147

Snr Deputy – Lynton Roberts 4844 5118

### **BUSH FIRE DANGER PERIOD COMMENCES ON 1<sup>ST</sup> OCTOBER 2013** **SOUTHERN TABLELANDS ZONE**

NSW Rural Fire Service SOUTHERN TABLELANDS ZONE has declared the start to the statutory Bush Fire Danger Period (BFDP) as at 1<sup>st</sup> OCTOBER 2013.

From October 1, any person wishing to light a fire in GOULBURN MULWAREE, UPPER LACHLAN and YASS VALLEY Local Government areas will require a permit.

**During a Total Fire Ban however, no fires of any kind may be lit even if you hold a permit.**

**THINK BEFORE WORKING OUTSIDE DURING THE FIRE SEASON**

**Always have water available for quick use**

**Take Care:** Once again we would like to remind you that **extreme care** must be taken when **working outside** such as welding or using grinders and in particular when **driving in long grass** or using a slasher or mower as all these events can easily result in the start of a fire.

### **ELECTRIC FENCES**

Electric fences are regularly used by landowners for the purposes of land management. These fences require regular maintenance to ensure that they do not short out. Maintenance can be undertaken to remove vegetation by spraying or brush cutting under the fence lines.

As a number of fires have started in the Southern Tablelands Zone recently it is recommended when the fire danger rating is very high or above that electric fences be turned off. This action will reduce fires accidentally been ignited by these fences.

Thank you for co-operation

**Peter Dyce**  
**Community Safety Officer**  
**Southern Tablelands Zone**

### **DO NOT MISS THIS COMING EVENT.**

#### **WINDELLAMA BUSHFIRE INFORMATION DAY**

" Presenting vital information that could save the life of you and your family "

Windellama Bushfire Brigade Shed 3762 Oallen Ford Road Windellama

COMMENCING AT 1:30PM SATURDAY 14TH DECEMBER 2013

### **Training**

If you wish to take part in the Windellama Brigade training or be contacted by email regarding the monthly training details visit the Brigades website and send an online contact form or email [windellamarfstraining@gmail.com](mailto:windellamarfstraining@gmail.com). For information on training dates, times and scenarios check the Brigade website or contact the Captain Rex Hockey 4844 5147.

[www.windellamarfs.com.au](http://www.windellamarfs.com.au)

### **No Meeting or Training in December**

**General Meeting** 18<sup>th</sup> January 2014, 6pm **Training** 18<sup>th</sup> January 2014, TBA by Graham Kinder

Wishing you all a safe and happy Christmas and a Happy New Year

# Goulburn Off Road Carts

[www.offroadcarts.com.au](http://www.offroadcarts.com.au)

**OPEN 6 DAYS**



**PORTABLE PETROL GENERATORS**  
From \$770



**LARGE DIESEL GENERATORS**  
\$5,900



**CARTS & BUGGIES**  
From \$3,300



**FARM BIKES**  
\$2,600

**QUAD  
BIKES**  
From  
\$5,000



**4WD TIPPERS** \$9,300



**FULLY EQUIPPED FIRE TRAILERS**  
\$4,200

**ENQUIRIES & SALES - PHIL BONSER**

**565 Mt. Baw Baw Rd, Goulburn NSW 2580**

**Mobile: 0419 694 148 Ph: (02) 4821 0397**



# Windellama Public School News

Email: [windellama-p.school@det.nsw.edu.au](mailto:windellama-p.school@det.nsw.edu.au)

Phone: 4844 5130

Website: [www.windellama-p.schools.nsw.edu.au](http://www.windellama-p.schools.nsw.edu.au)

Fax: 4844 5265

## ENVIRONMENTAL TALK

We were lucky to have Felicity Sturgiss come to school to share her wealth of knowledge on our local flora and fauna. Both students and staff enjoy learning about our local ecosystem from Felicity.



## INTENSIVE SWIM SCHOOL

All students thoroughly enjoyed swim school. They related well to the excellent swim teachers at the Goulburn Aquatic Centre and all students made improvements with their swimming.

## WINDELLAMA CUP

This was a fun filled afternoon where students, parents and grandparents participated in an afternoon of fun races. The competition was fierce! The winners are as follows:

Windellama Billy Cart Cup - Brett, Chloe and Tyla

R&J Carey Windy Plate – Archie

The Edworthy Eggy Stakes - Olivia and Kiara



## BOOK FAIR

There was a fantastic turn out for this year's Book Fair. The theme was 'Reading across the Universe' so students dressed up with space as the theme. The day was very successful!



## PRESENTATION NIGHT

Presentation night is an important date on our yearly calendar. It is a night to celebrate all of the wonderful achievements students have made throughout the year. Everyone in the Windellama community is welcome to come and share the night with us at school on Monday 16 December. Please call the school if you would like to come along so we can organise catering.

## UPCOMING EVENTS

- Assembly: Wednesday 27 November
- Kinder Orientation No3: Thursday 28 Nov
- Cricket Coaching: Each Friday until 6 December
- Nursing Home Visits: Wednesday 4 December
- Lieder Theatre: Wednesday 11 December
- Presentation Night: Monday 16 December

# WINDELLAMA PLAYGROUP

at

Windellama Public School

Each Thursday

9.30am – 11.30am



**BYO snacks - tea & coffee supplied**

**Qualified art teacher visiting each fortnight**

**Bring your bubs & toddlers for a fun morning**

**Music, stories, sand-play, free-play, art, craft.**

## FREE!

**For more info ring Tony at the school on - 4844 5130  
(NO PLAYGROUP IN SCHOOL HOLIDAYS)**



JCF Contractors are the specialist team to ensure your project has the manpower to complete all your key projects on time, to budget and at the highest level of quality.

No matter what your project, JCF can assist you in:

- Earthmoving
- Road Works
- Driveways
- Site Works
- Arenas
- Demolition
- Footings & Piers
- House Excavation
- Shed Sites
- Rubbish Removal
- Septics
- Landscaping
- Trenching

**Call Jon today for your FREE quote  
0428 624 966**

Goulburn and surrounding areas





## Windellama Landcare Group Annual General Meeting and Christmas party

The AGM will be held on Saturday 7 December at the Landcare HQ Shed at the Windellama Hall starting at 11.30 am. This will be followed by the Christmas party at 12.30 pm. Members are asked to bring a plate to share. Reminder – the annual membership subscriptions are due! Of course this festive event may already have taken place, but ... there's still time to choose one last present for Christmas ...

Why not a copy of ...

### WILD WINDELLAMA

As new plants emerged during the spring after all the good rain, were you wondering what they were? Do you want to know more about some of the colourful – or noisy – birds that are visiting your place?

Carina Clarke's articles, accompanied by her beautiful sketches, about local birds, animals, plants, insects, fish and reptiles of the local area were published in the Windellama news over a number of years, are now collected in a two volume set called Wild Windellama.

Copies are available from the Secretary, Windellama Landcare (02 4844 5047) at \$10.00 per set (volumes 1 and 2).

### ARE YOU INTERESTED IN JOINING LANDCARE?

Have you thought of joining our Landcare group – where you can learn how to tackle the land management issues of our sensitive soils? It is also a great social activity – meeting local people while learning about our unique local area. Annual membership of Windellama Landcare is \$5.00 per family. Children are very welcome. If you are new to the area and are interested in joining Landcare why not join us at one of our working bees to see what we do? Phone Warren, the President, on 4844 5350 or Sandra, the Secretary, on 4844 5047.

Windellama Landcare wishes everyone a very happy Christmas time and we look forward to a great New Year with lots of Landcare activities



## Countrywide Shower Screens



### Shower Screens

• Frameless • Semi-framed • Framed

### Mirrors

• Bevelled • Polished

**Mick Greenwood**  
**0448 494 220**

Fax: (02) 4849 4220

E: [countrywideshowerscreens@bigpond.com](mailto:countrywideshowerscreens@bigpond.com)

**Free Measure and Quote**

*Need a Plumber Call. . .*

**GRAHAM MOON**



Lic. No. 194029C

Plumber - Drainer - Gas Fitter

Roof Plumber - L.P. Gas

DOMESTIC & COMMERCIAL - 7 DAYS

Phone **0428 223 677**

## AARON'S MINI EXCAVATIONS

ABN 84197940351

- \* BOBCAT
- \* 5 TON EXCAVATOR
- \* TIPPER
- \* SITE PREPS DRIVEWAYS
- \* SITE / PROPERTY CLEAN UPS
- \* POST / PIER HOLES
- \* TRENCHING & DRAINAGE
- \* RETAINING WALLS
- FREE QUOTES**
- 4841 1862 - 0418 111 862**

## Lowline Cattle

Quite, easy to handle stock - smaller size means easier handling, less stress on fencing & less soil compaction!



LOWLINE

Great for first time cattle owners & for introducing children to cattle

## Heard of Wiltipoll Sheep?

Wiltipoll sheep don't need shearing they shed their wool, are very hardy, don't crawl or wander, & produce fantastic fat lambs!



**WILTIPOLL**  
THE LESS WORK PRIME LAMB BREED

## Windellama Downs

*Producing quality, Australian breed cattle & sheep suitable for any size rural holding*

### Stock for sale

Commercial or registered stud stock  
Mob: 0416 047 488 Ph: 4844 5175  
Email: [windellamadowns@iinet.net.au](mailto:windellamadowns@iinet.net.au)

This space is  
available for your  
advertisement

**\$12.00**





With warmer nights, we hope, sowing of vegetables to harvest in Autumn can now be carried out.

Beans both climbing and bush, beetroot, silver beet, cabbage, capsicum, carrots, lettuce, marrows, parsley, parsnip, pumpkins, radish, sweet corn and late tomatoes can be sown now.

## FLOWERS

Ageratum, amaranthus, snapdragons, aster, begonia, carnation, celosia, cosmos, dwarf dahlia, dianthus, marigold, nasturtium, petunias, phlox, portulaca, salvia (red & blue), torenia, verbena and zinnia.

If we get hot weather roses and gladioli can be attacked by thrip, a very minute insect that sucks the sap from the petals and flowers appear to be distorted and burnt. Spray them with Rogar or Lebaycide, these chemical will also control aphids.

If weather is hot and humid, watch roses for fungus diseases such as black spot or mildew. Spray with rose spray also controls aphids.

I had aphids on my new buds of the rose, and made up 1 teaspoon of bi-carbonate soda to 750 ml of water with a dash of detergent and sprayed with this, it seems to have done the trick.

This month control fruit fly on all fruit trees, sent up a fruit fly trap, or spray your apples,



pear, peaches, peaches, nectarine and quinces with Rogar or Lebaycide every three weeks.

Give dahlias a side dressing of complete fertilizer and re-tie to stakes.

## GROWING TIPS FOR BEANS



Beans prefer soil with a ph of 6-7 and little nitrogen. Wood ash is an effective liming agent for acid soils.

Crop rotation as beans are nitrogen fixers, they're good to plant after crops such as broccoli and cabbages,

which take a lot of nitrogen out of the soil.

Sow the seeds and water them in well.

Plants tend not to pod up during periods of high over night temperatures, so spraying your crop with water in the evening can trick them into produces more beans. This can also help to prevent two- spotted mite as it creates unfavourable conditions for them.

Fungal problems, such as anthracnose, may occur during cool, wet periods. It shows up as black and red-brown spots



on the pods, stems or leaves. Remove infected plants and practise crop rotation.



# Donlin Dexter Stud

**"Keeping the Irish Tradition"**



## **Breeding the 'small acre mate'**

- House Cows
- Stud cattle
- Lawnmowers

## **Enhancing their docile natures:**

- Halter Trained
- Handled daily

***Naturally small, beefy little buggars***

**Over half our herd produce pure A2 milk**

## **DNA Tested for:**

- Parent Verification
- A2 Milk Protein
- PHA & BD1
- Colour (Including Dun)



**Contact: Lindsay and Donna**

**Bungendore, South East NSW. Ph: 0416 893 806**

**Email: [donlin.dexters@yahoo.com.au](mailto:donlin.dexters@yahoo.com.au)**

**Website: [www.donlindexters.com.au](http://www.donlindexters.com.au)**



## Shibetsu Delegation set for 2014

Goulburn Mulwaree Council is planning a visit to Shibetsu, our Japanese Sister City. The trip will take place in July 2014.

Over recent years a number of delegations from Shibetsu have visited Goulburn. Most recently in March this year to help Goulburn celebrate it's 150<sup>th</sup> birthday. Council now believes that it is time for a return delegation to visit Shibetsu.

The plan is to have a range of delegates undertake the trip, including Councillors, Staff, Business and Citizens. While the planning and coordination will be undertaken by Council staff, all delegates will pay their own expenses. While in Shibetsu there will be a number of Civic functions hosted by Shibetsu City Council and a tour of the City and surrounds.

Participants will have the opportunity to add additional sightseeing to other parts of Japan if they wish.

An information evening is planned to discuss further details and any specific requests from interested participants. To register your interest in attending the information night, please contact Michelle Hughes on 4823 4480 or email [michelle.hughes@goulburn.nsw.gov.au](mailto:michelle.hughes@goulburn.nsw.gov.au)

General enquiries should be directed to Councils Manager Community Services Jim Styles on 4823 4485 or email [jim.styles@goulburn.nsw.gov.au](mailto:jim.styles@goulburn.nsw.gov.au)

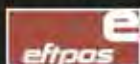


*Geoff Kettle, Mayor Goulburn Mulwaree Council, Susumu Takariko, Former Mayor, Shibetsu City Council, Michio Chiba, Chairman, Shibetsu Chamber of Commerce and Industry, Bob Kirk, Deputy Mayor Goulburn Mulwaree Council, Akihiro Higashikawa, Assistant Manager, Secretary and Public relations Section, Shibetsu City Office during Goulburn 150<sup>th</sup> Birthday presentation March 2013.*

# Nirvalley Homestead NURSERY

629 Cullulla Rd, Tarago

**PH 4849 4481**



★ ★ ★  
**Quality Plants  
Best Prices**

Sat & Sun 8am-5pm,  
Fri & Mon 10am-3pm  
or call to check for  
other days and times

**All our plants are ideal for local  
conditions and fully acclimatized**

Big selection of trees, natives, shrubs,  
hedging, windbreak, tube stock

**Special Orders • Free local delivery**

*Talk to us about* **LANDSCAPING**  
**Garden Design & Maintenance**  
**Irrigation and**  
**Watering Systems**



***Great Xmas  
Gift Ideas***

**Big range of Japanese Maples  
starting from \$12**

**Trees from \$20**

**Advanced feature trees**

**Weeping Cherry and Peach**

**Lots of Magnolias**

**Standard Camellia Sasanquas**

**Fruit and Citrus trees**

**Rare and Unusual plants**

**Lots of natives and shrubs**

*Gift Vouchers available*

**SPECIAL - Fuchsias \$4.50**

TRAIN YOUR  
**DOG**



**SCOTT BORLAND**

Pack Leader / Rehabilitator

Professional Dog Training

Dog Behaviour Consultation

Pet Product Sales / Advice

☎ 0420 425 901

✉ info@trainyourdog.com.au

🌐 www.trainyourdog.com.au



## **BRIAN'S AUTOSCREENS & GLASS**

Mirrors • Showers

Mirror Wardrobes

Windscreens • Glass

Security Screens etc.

**440 Auburn St Goulburn**

**Ph 4821 2633**

Fax 4821 9133

## ***D & J RIGOLI***



**HANDYMAN SERVICES  
&  
PROPERTY MAINTENANCE**

ABN 43002820238

**\* INTERIOR LINING**

**\* SMALL RENOVATIONS**

**\* SHED TO HOME CONVERSIONS**

**\* PERGOLAS      \* VERANDAHS**

**\* PAINTING    \* TILING      \* PAVING**

**And much more...**

**no job too big or small !**

**Will beat any reasonable quote**

**Ph: 4844 5393**

**Mob: 0419 492 799**

**Fax: 4844 5163**

**E: dickrigoli@gmail.com**



# CHURCH INFO

## Catholic Church Services

Parish Priest: Fr. Dermot McDermott

Assistant: Fr. Sijo Jose

Presbytery & Parish Office

Phone 4821 1022

\*\*\*\*\*

Sunday Mass will be at 8am on the 2nd & 4th  
Sunday at St. Patrick's **Marulan**.

Mass Times in **Goulburn** are:

Saturday Vigil Mass:

5pm (DST) at St. Peter & St. Paul's

Sunday: 7am. at Our Lady of Fatima,

Nth. Goulburn

Sunday: 10am. at St. Peter & St. Paul's

---

### **St. Joseph's Church, Tarago**

3rd Sunday of the Month

Enquiries: 4821 1022

### **ST. PATRICK'S MARULAN** **CHRISTMAS MASS TIMES**

**St. Patrick's Marulan 6pm. Vigil Mass**  
**Tuesday, 24th. December**

St. Peter & St Paul's

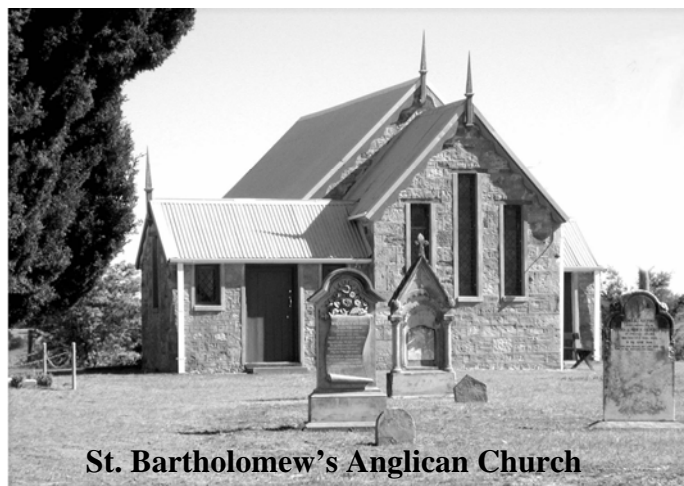
Children's Mass 6pm 24th. December

St. Peter & St. Paul's

Vigil Mass 8pm 24th. December

Our Lady of Fatima

9am. Christmas Day



St. Bartholomew's Anglican Church

## **CHURCH SERVICES**

### **December**

St. Mark's - Bronte

Sunday 8th -11:30am

**St. Bartholomew's – Windellama**  
**Christmas Eve Service & Carols**  
**Tuesday 24th - 8pm**

### **January**

St. Mark's - Bronte

Sunday 12th – 11:30am

St. Bartholomew's – Windellama

Sunday 26th - 11:30am

The Reverend Vanessa Bennett can be  
contacted on 4821 3631 or mobile  
0417 699 700

---

### **St. Andrews (Anglican) - Tarago**

2nd Sunday 9am

St. John's - Lake Bathurst

4th Sunday 9am

---

## **NERRIGA**

### **ANGLICAN CHURCH SERVICES**

**Held at Nerriga Church**

**2nd Sunday each month at 2pm**

**(Except Easter & Christmas)**

**All Welcome**

Industrial • Commercial • Rural • Domestic  
Ph 4844 7088 **INSTALLATIONS** 0418 234 289

# ALLARD

**ELECTRICAL CONTRACTING SERVICES**  
**SOLAR UTILITIES & ENERGY SERVICES**  
**GAS-OIL COMBUSTION SERVICES**  
stevenallard@bigpond.com

**ELECTRICAL LICENCES:**

NSW Lic.No 198855C  
NSW Lic.No 498875S  
ACT Lic.No 2009576  
QLD Lic.No C13290

**ACCREDITATIONS**

AUS C.E.C. Design & Install Grid Connect  
& Stand Alone Solar Systems #A3632173  
ACT Type (B) Gas Appliance #200732  
NSW O.H.&S. General Induction #03655  
NSW Confined Space Trained #1140909

## RON WENBAN

Local Electrician

Accredited Solar Installer

0428 445 259

ronwenban@skymesh.com.au

NSW LIC No: 174303C ACT LIC No: 2008568 CEC Accreditation No: A0597678



### Southern Districts Piano Service

Pianos • Pianolas • Tuning • Repairs  
Re-polishing • Removals

*Graham Price*

**02 4844 5329**



## CJ Solar

"Quality Systems that last"



Home, Business or Community  
Organisations

**Custom Designed To  
Meet Your Energy Needs**

- ◆ Stand Alone Systems
- ◆ OnGrid With Battery Backup
- ◆ Grid Connect
- ◆ Clean Energy Council Accredited

**Ph: 4849 4225**

**[www.cjsolar.com.au](http://www.cjsolar.com.au)**

PREVIOUSLY TRADING AS SUN POWER

LICENSED ELECTRICAL CONTRACTORS (241654C)



Still green here at la Granja but will not be for long if it does not rain. Some due at weekend, pray !!

In October sadly Princessa came for breakfast one day with a limp. We gave her everything natural I could think of for two weeks but to no avail. Jan came twice and also gave her medicine but she just gradually got worse and all her legs were affected and her back. Jan thought that she might have a chip or a fracture in one leg. Poor girl, I kept her and all of her friends at the front so that she did not have far to walk, certainly going right to the back of our property would not have helped.

Upon the second visit of Jan I sat with her whilst she went to heaven and released her soul and her body is buried here in their feed run, just outside the study window. She was a lovely girl with mascara around her eyes and she was so mild. I will never forget her.

Last week Guevara developed a limp but after vitamin C and Arnica she is now OK. I have a theory that Princessa fell in a rabbit hole, we have lots here.

I went to the Windellama Field day with Vivien last Saturday and had an enjoyable day. Did not sell much, only eggs but spoke to many people about how we CANNOT eat Alpaca. Most were amazed Australians eat them and wanted to sign my petition.

For the record it is it is a Care 2 petition." Stop killing and eating Alpaca for meat. " My website is [lagranjaholisticpacas.com.au](http://lagranjaholisticpacas.com.au) and phone number 48494439.

Happy creature care and compassion. Joy Elizabeth Allenby- Acuna.



Monty with our rescued baby magpie, Pico. Aurora



# Classified Advertisements

**All personal classifieds are FREE & also included in the Tarago Times**

**We run your advert until you let us know  
when you have sold it or gained it**

---

## GENERAL FOR SALE

---

**Camp Bed**, folding, single with mattress. Good condition. Ph 4844 5001

**Pine TV & display unit** with 23" analogue TV & digital box. \$250 for the lot. Ph 4849 4371

**Parrot Cage** on stand, good cond. \$150 ONO. Ph 0429 006 745

**Cocky's Cage** 190cm high, 150cm wide, 65cm depth \$100.00 Ph 4844 5287

**Outdoor camp shower**, canvas bucket, 20 Ltr capacity \$10 Phone Bob 4844 5001.

**Firewood** - \$150 per load, includes delivery. Ph 4849 4520

**Teak entertainment unit**, with two glass door display. 6x4 foot. \$75.00 ONO.

**Double bunks**, Metal, with ladder, new innerspring mattresses. \$125.00 ONO

**Two wooden bed side tables** with cane draws. \$50.00 for two. Ph. 4849 4480

**3 seater Navy Sofa Bed**. Innerspring Mattress. Good condition. \$100 **Portable Cot** with mattress. Good condition. \$40 Beautiful 1930's solid oak dressing table, French polished, \$200 Ph 4844 5500

**Straw ex Field Day**, available for sale at \$10 per bale. Phone Bob 4844 5001

**Assorted Household furniture**, fridge, table, chairs, china cabinet, T/Tennis table. Braidwood Road TARAGO. Ph 0417 484 944

---

## FOR LEASE

---

**Belted Galloway Bulls** for lease, Black & white and Red & white, 4 years old. Both registered with certificates. Call John on 0411 349 555.

---

## RURAL RELATED FOR SALE

---

**Duncan Direct Drill**, 20 tyne. Good order. \$3,500. Ph 4844 6250

**Stockcrate** 1.8 x1.8 x1.2 galvanised 40 x 40mm, Good for sheep or calves, sliding rear roller door VGC -\$500 o.n.o. Ph 0412 421 464

**Super/Lime/Manure Spreader**, CRUMP 2 tonne capacity, all steel construction, twin chain, variable discharge in good working order. Phone Paul on 48447031 AFTER 7pm

---

## WANTED

---

**Farm Contractor** with tractor (only) to deep rip tree lines. Needs to be able to pull a 3 shank Yeomans Plough. 60-100hp required. Location is 2 km from Lumley Rd turn off, on Mayfield Rd. Please call Nick Huggins 0417 010 956

**Pekin ducks** One or two female as company for my existing 2 year old female. Ph Pam 4844 5180

**Rotary Aerator, tow or 3PL**. Ph 4844 7129 or 0418 223 617

**Knitting wool** for volunteer knitters for charity. Any leftover wool, any ply, gratefully accepted. Ph Denise 4844 5087

**WANTED EDITOR** - for Windellama News, every second month. Must know publisher programme. All queries please direct to Denise Johnson on 4844 5087.



# Classified Advertisements

**All personal classifieds are FREE & also included in the Tarago Times**

**We run your advert until you let us know  
when you have sold it or gained it**

## ANIMALS FOR SALE

**Belted Galloway Bull** for sale, Registered with certificate, 3 years old, black & white, docile, Windellama area \$1500. Call John 0411 349 555.

**Puppy**, bully stag, male, white, vac., microchipped, 10 weeks. \$400 ONO Ph 0429 006 745

**Piglets** - different ages so different prices. Ph Bob McDonald 0429 494 331

Young **ducklings** - Buff Orpington/Peking cross - \$12 each

**Quarriors** - greys, and Pearls - \$15 each. Ph 4845 9147 after 6PM.

**Working Bull Murray Grey**, \$950.00 ONO. Ph. 0414616960

**Alpacas** - lots of different colours and ages. From \$250 each Phone Jacki 0428 298 157 Boxers Creek

**Angora Goats** - various ages & sizes. \$20-\$35 each. Ph 0428 238 204

**2 Auracana cockerels** - champion stock, (blue egg layers). Reduced to \$50 each.(A bargain). Also 2 Ancona bantam cockerels - quality birds - \$10 each. Phone 48459147, after 6pm

**Bull - Galloway**, 8 months old. \$350 Bull - Galloway cross, 8 months old. \$300 Steers also available. Ph Roger or Terrie 4844 5327

**Dorper Rams**, black headed, 1 x 4 yrs, 1 x 1 yr. Ph 4844 5570

**2 Friendly Baby Goats** Born 23/9/13. Ph Sonia 4844 5838

## CARS, BIKES, TRAILERS, etc. FOR SALE

**Toyota truck**, 1988, good working order, with 13ft steel tray & stock crate. Ph 4829 5123

**Transalloy Ute Tray** 1.8 x 1.8, suit most 4x4's, complete with dropsides and LED lights VGC -\$1100 o.n.o. Ph 0412 421 464

**Polished Alloy Rear Ute Sports Bar** \$100 Ph 0412 421 464

**Aluminium Savage 4.3m Boat** (1995) with 30hp Yamaha outboard on brooker trailer. Front steering & canopy, electric start, radio, compass, plus all extras. Always garaged & flushed, runs well. \$5,900 ONO Call Scott 0418 563 888

**Mitsubishi dual cab Triton 95 Diesel ute** 2.5 Turbo Diesel 4x4 Old Man Emu Suspension, 140 litre fuel Tank 40L water tank canopy etc \$2900ono 48459093 W/E's or 0414563485 Wdays Reg 10/10/13 will get RWC.

## Coming Events...

### December

7th Landcare AGM

Charity Horse Ride @ Nerriga

14th Fire Info Day

### January

1st Cricket Challenge Vs Bungonia

9th Willow Glen Garden Group

18th Windellama RFS Training & Meeting

### Our Advertising Charges

Classifieds - Personal (maximum 2 lines)	<b>FREE</b>	
	<b>Month</b>	<b>Year ( 11 issues)</b>
Small advertisement (business card size)	\$ 6.50	\$ 65.00
Quarter page advertisement	\$12.00	\$120.00
Half page advertisement	\$25.00	\$250.00
Full page advertisement	\$50.00	\$500.00
Double page discount	\$90.00	
Inserts - \$40.00 for 400 inserts into hard copies		
Typesetting of adverts: \$50		

#### **PAYMENT:**

**Cheques:** payable to *Windellama News*  
*PO Box 705, Goulburn. 2580*

**Direct Deposit or EFT:** IMB Ltd; BSB 641.800;  
A/c 200045794 with Name & advert as detail

**\* Unpaid adverts will be cancelled  
after one month**

**\* All advertising copy must be  
accompanied with payment**

All advertising enquiries to Denise Johnson

### **Fees for Hire of Hall or Supper Room at Windellama Hall**

<b>*HALL</b>	<b>ALL DAY</b>	<b>\$200</b>
	<b>DAY 4hrs or less</b>	<b>\$100</b>
	<b>EVENING/NIGHT**</b>	<b>\$200</b>

\*Includes Supper Room & Kitchen

\*\* \$2 per hour for heating

#### **SUPPER ROOM** (Includes Kitchen)

<b>ALL DAY</b>	<b>\$80</b>
<b>DAY 4hrs or less</b>	<b>\$40</b>
<b>EVENING/ NIGHT</b>	<b>\$100</b>

# Use of the premises prior to your booked  
function will incur a surcharge of  
Supper Room Fee

**To Book please ring W. P. A. Secretary,  
Frances Knights on 4844 5157**

### **TARAGO TRANSFER UPDATE & DRUM MUSTER STATION**

**Open Friday to Monday  
8.00am—4.45pm.**

**Card required for household waste,  
or fees apply.**

**Free recycling of the following:**  
Plastics, tins, oil, batteries, glass,  
paper and cardboard.

**Free recycling also of Drum Muster  
Chemical Drums providing they are  
empty, triple washed and have the lids  
removed**

### **Tipping Fees for Tarago**

#### **Sorted Waste - Domestic Residents only**

Car, station wagon, small ute or small trailer	\$ 16.00
Medium trailer, large ute or 1-tonne truck load	\$ 21.00
Large trailer load	\$ 33.00

#### **Unsorted Waste and Non-Residents Waste**

Garbage & trade waste (uncompacted, per cubic metre)	\$ 78.00
Garbage and trade waste (compacted, per cubic metre)	\$ 133.00
Other unsorted waste— 2 x sorted rate per category	

**Hard fill demolition waste not accepted at Tarago**

**Animals — Note:** *Animal carcasses cannot be  
dumped at Tarago as there are no facilities for burial  
please refer to Goulburn Mulwaree Council for details  
on availability in this area.*

Car Bodies	\$ 56.00
Tyres — Car Tyres (each) - per tyre	\$ 11.00
Motorcycle tyres (each)	\$ 9.00
Truck tyres (each) - per tyre	\$ 26.00
Tractor tyres (each) - per tyre	\$ 95.00



# COMMUNITY INFORMATION

## Windellama Progress Association

Lloyd Turner (President) 4844 5214  
Frances Knights (Secretary) 4844 5157

## Windellama Rural Fire Brigade

Rex Hockey (Captain) 4844 5147  
Graham Kinder (President) 4844 5330  
Ellen Sylvester (Secretary) 4844 5407

## Windellama Field Day Committee

Heather Caulfield (Secretary) 4844 5120  
Frances Knights (Treasurer) 4844 5157

## Windellama News

Denise Johnson (Editor) 4844 5087  
Gayle Stanton (Editor) 4844 5156

## Windellama Garden Cub Inc.

Pam Williams (Secretary/Treasurer) 4844 5194

## Windellama Hall Country Markets

Bob Shaw 4844 5001

## Windellama Historical Society

Rex Hockey (President) 4844 5147  
Julian Woods (Secretary) 4844 5270

## Windellama Landcare

Warren Yates (President) 4844 5350  
Sandra Greville (Secretary) 4844 5047

## Windellama CFR

Kevin Muffet 4844 7143

## Windellama School P&C

Shelly Andrews (President) 4844 5630  
Heather Caulfield (Secretary) 4844 5120

## Willow Glen Gardeners

Warren Yates 4844 5350

## Wires (wildlife rescue)

Marian Pearce 4844 5244  
Southern Tablelands WIRES 4822 3888

## Tarago Pony Club

4844 7014

## Justice of the Peace

Linda Shannon 0429 980 141  
Geoff Burns 4849 4330

## FOR ALL EMERGENCIES

eg. FIRES / ACCIDENTS

PHONE 000

For Mobile users & Landlines



## Important Phone Numbers

### Rural Fire Brigades



Windellama	Rex Hockey	4844 5147
Tarago	Ken Vassel	4849 4652
Taylor's Creek	Dave Elward	4849 4240
Mt Fairy/Boro	Mike Welford	4849 4623
Bungonia	Craig White	0407 718607
Gundary	Jason Gray	4822 2903
Nerriga	John Rolfe	4845 9160
Bushfire Information		1800 059 333

[www.windellamarfs.com.au](http://www.windellamarfs.com.au) or [www.rfs.nsw.gov.au](http://www.rfs.nsw.gov.au)

**WINDELLAMA PH: 4844 5359 or**

**CHANNEL 21/209 Base**

### AMBULANCE



Ambulance Booking  
Goulburn Ambo Station

**000**

13 12 33  
4827 0444

### Windellama SES

Kevin Muffet  
Poison Info. Service  
Goulburn Base Hospital

**132 500**

4844 7143  
13 11 26  
4827 3111



### Police

Tarago Station -  
Snr. Constable Brad Carey  
Goulburn

4849 4411  
4824 0799

### Other

Goulburn Railway Station	4828 5816
Train info & bookings	13 22 32
<a href="http://www.countrylink.info">www.countrylink.info</a>	
Country Energy - interruptions	13 20 80
Lifeline	13 11 14
Kids Helpline	1800 551 800

# December 2013

MON	TUE	WED	THU	FRI	SAT	SUN
30	31					1
2	3 Willow Glen Gardeners	4	5	6	7 Landcare AGM & Xmas party Nerriga Progress Meeting	8 St. Mark's
9	10 Craft Arvo	11	12 School Playgroup	13	14 RFS Open Day	15 Windellama Hall Country Markets
16 Progress Meeting	17	18 Nerriga Gardeners	19 School Playgroup	20	21	22
23	24 St. Bart's Xmas Eve Carols	25 Christmas Day	26 Boxing Day	27	28	29

**For details of times and places - see articles inside this issue  
Emergency phone numbers are on the back of this page.**